

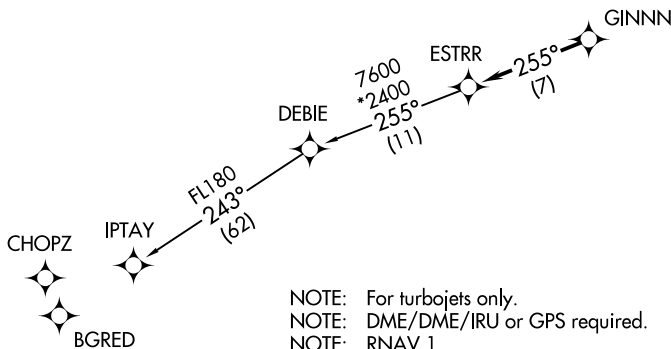
ESTRR FOUR DEPARTURE (RNAV)

ATIS★
 133.675
 CLNC DEL
 118.55
 CLNC DEL (when twr closed)
 127.25
 GND CON
 121.85
 CONCORD TOWER★
 134.65 (CTAF)
 UNICOM
 122.95
 CHARLOTTE DEP CON
 128.325 307.8

**TOP ALTITUDE:
3000**

TAKEOFF MINIMUMS

Rwy 2: Standard.
 Rwy 20: Standard with minimum climb of 320' per NM to 2400.



- NOTE: For turbojets only.
- NOTE: DME/DME/IRU or GPS required.
- NOTE: RNAV 1.
- NOTE: RADAR required.
- NOTE: If unable to accept climb rates, advise ATC on initial contact.
- NOTE: Upon reaching 10000 MSL, accelerate to and maintain 280K, if unable advise ATC.

NOTE: Chart not to scale.

DEPARTURE ROUTE DESCRIPTION

TAKEOFF RWY 2: Climb heading 016° to 2200, thence. . . .

TAKEOFF RWY 20: Climbing left turn heading 150° to 2400, thence. . . .

. . . .on heading assigned by ATC, expect RADAR vectors to GINNN, then on track 255° to ESTRR, then on IPTAY transition. Maintain 3000, expect clearance to filed altitude within 10 minutes after departure.

IPTAY TRANSITION (ESTRR4.IPTAY)

ESTRR FOUR DEPARTURE (RNAV)

(ESTRR4.ESTRR) 03JAN19

SE-2, 30 DEC 2021 to 27 JAN 2022

SE-2, 30 DEC 2021 to 27 JAN 2022