

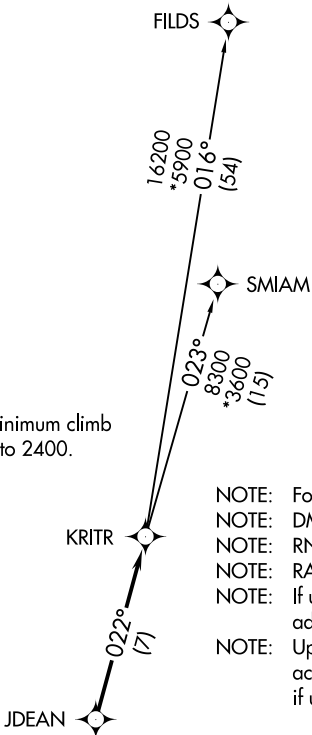
KRITR FIVE DEPARTURE (RNAV)

ATIS ★
 133.675
 CLNC DEL
 118.55
 CLNC DEL (when twr closed)
 127.25
 GND CON
 121.85
 CONCORD TOWER ★
 134.65 (CTAF)
 UNICOM
 122.95
 CHARLOTTE DEP CON
 128.32 307.8

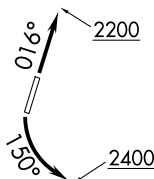
**TOP ALTITUDE:
 3000**

TAKEOFF MINIMUMS

Rwy 2: Standard.
 Rwy 20: Standard with minimum climb
 of 320' per NM to 2400.



- NOTE: For turbojets only.
- NOTE: DME/DME/IRU or GPS required.
- NOTE: RNAV 1.
- NOTE: RADAR required.
- NOTE: If unable to accept climb rates, advise ATC on initial contact.
- NOTE: Upon reaching 10000 MSL, accelerate to and maintain 280K, if unable advise ATC.



NOTE: Chart not to scale.

SE-2, 30 DEC 2021 to 27 JAN 2022

SE-2, 30 DEC 2021 to 27 JAN 2022



DEPARTURE ROUTE DESCRIPTION

TAKEOFF RWY 2: Climb heading 016° to 2200, thence. . .

TAKEOFF RWY 20: Climbing left turn heading 150° to 2400, thence. . .

. . . on heading assigned by ATC, expect RADAR vectors to JDEAN, then on track 022° to KRITR, then on assigned transition. Maintain 3000. Expect clearance to filed altitude within 10 minutes after departure.

FILDS TRANSITION (KRITR5.FILDS)

SMIAM TRANSITION (KRITR5.SMIAM)

KRITR FIVE DEPARTURE (RNAV)

(KRITR5.KRITR) 03JAN19