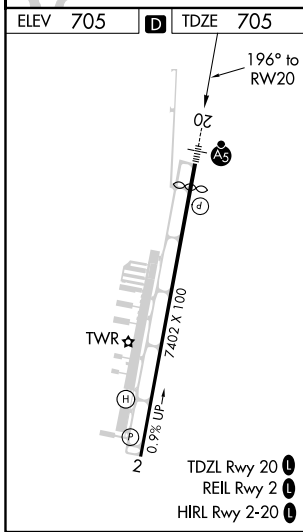
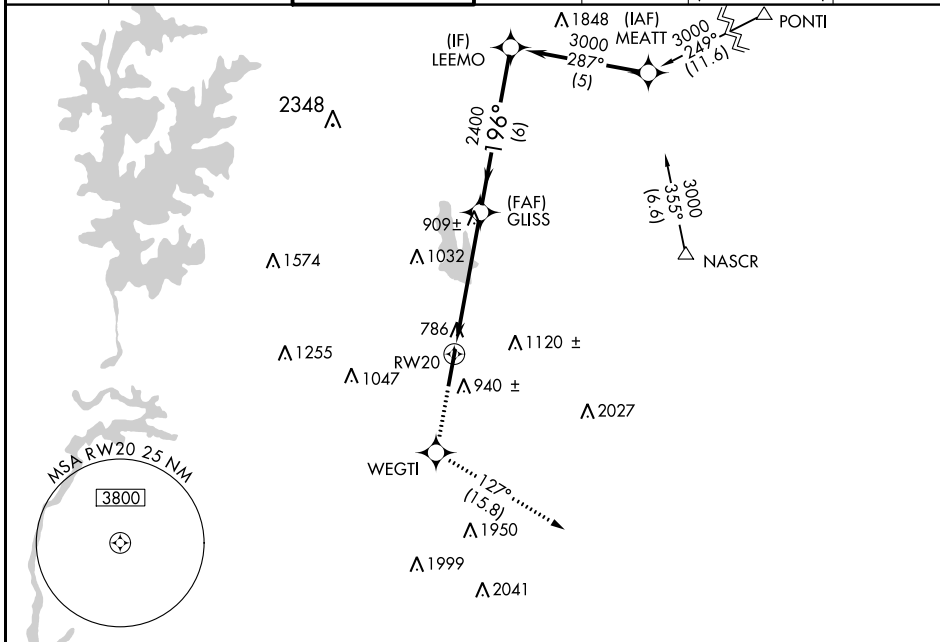


WAAS CH <b>56499</b> <b>W20A</b>	APP CRS <b>196°</b>	Rwy Idg TDZE Apt Elev	<b>6350</b> <b>705</b> <b>705</b>
--	------------------------	-----------------------------	---

# RNAV (GPS) RWY 20

CONCORD-PADGETT RGNL (JQF)

RNP APCH.		MALSR		MISSED APPROACH: Climb to 3000 direct WEGTI and on track 127° to LOCAS and hold.		
<p>▼ For uncompensated Baro-VNAV systems, LNAV/VNAV NA below -16°C or above 54°C. For inop ALS, increase LNAV/VNAV visibility all Cats to 1½ SM.</p>						
ATIS ★	CHARLOTTE APP CON	CONCORD TOWER ★	GND CON	CLNC DEL	CLNC DEL	UNICOM
<b>133.675</b>	<b>128.32 307.8</b>	<b>134.65 (CTAF)</b>	<b>121.85</b>	<b>118.55</b>	<b>127.25</b> (when twr closed)	<b>122.95</b>



ELEV 705	D	TDZE 705	LOCAS 093° 4 NM 273°			
3000	WEGTI	LOCAS	LEEMO 3000			
↑	✧	△	GP 3.00° TCH 44			
*LNAV only.			*1.8 NM to RWY 20			
RWY 20			2400 196° 2400			
1.8 NM			3.3 NM		6 NM	
CATEGORY	A	B	C	D		
LPV DA	955-½		250 (300-½)			
LNAV/VNAV DA	1222-1¼		517 (600-1¼)			
LNAV MDA	1300-½ 595 (600-½)		1300-1¼		595 (600-1¼)	
CIRCLING	1300-1 595 (600-1)		1480-2¼ 775 (800-2¼)		1480-2½ 775 (800-2½)	

SE-2, 30 DEC 2021 to 27 JAN 2022

SE-2, 30 DEC 2021 to 27 JAN 2022