

WAAS CH <b>63233</b> <b>W35A</b>	APP CRS <b>359°</b>	Rwy Idg TDZE Apt Elev	<b>5010</b> <b>990</b> <b>1010</b>
--	------------------------	-----------------------------	--

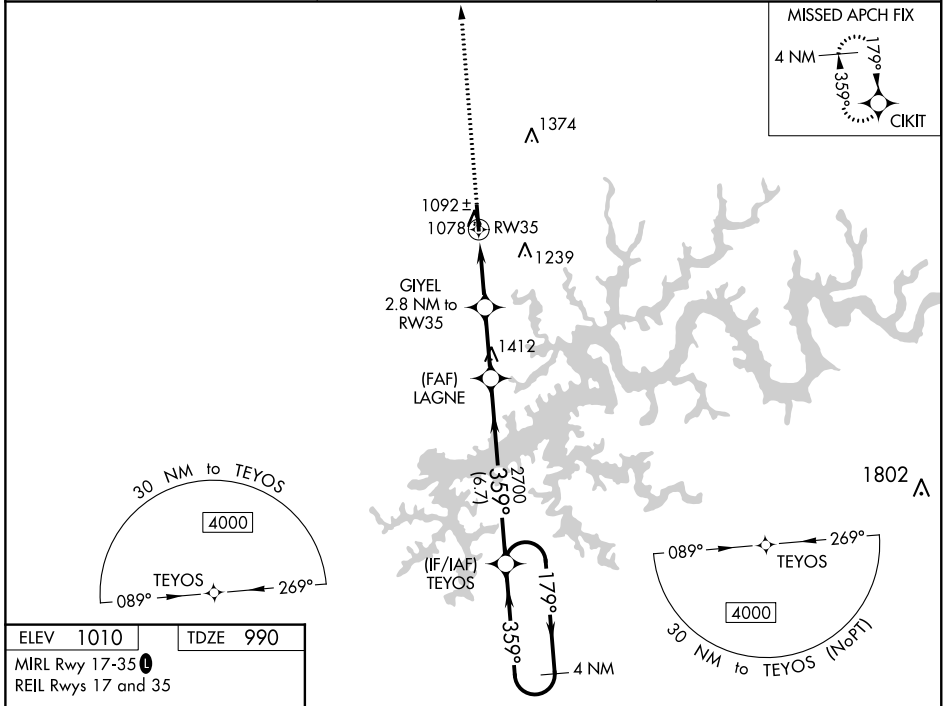
# RNAV (GPS) RWY 35

RUSSELL COUNTY (K24)

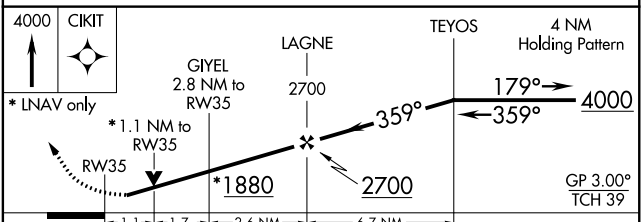
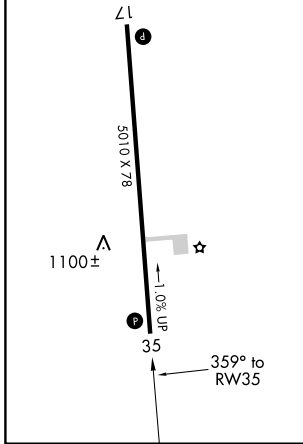
**▼** For uncompensated Baro-VNAV systems, LNAV/VNAV NA below -17°C (2°F) or above 54°C (130°F). DME/DME RNP-0.3 NA. Baro-VNAV and VDP NA when using Wayne County altimeter setting. When local altimeter setting not received, use Wayne County altimeter setting and increase all DA 42 feet and all MDA 60 feet. Increase LPV all Cats visibility ¼ mile and LNAV/VNAV all Cats visibility ⅜ mile and LNAV and Circling Cat C/D visibility ¼ mile. Helicopter visibility reduction below ⅜ mile NA.

**MISSED APPROACH:**  
Climb to 4000 direct CIKIT and hold.

AWOS-3 <b>119.6</b>	INDIANAPOLIS CENTER <b>124.625 371.925</b>	UNICOM <b>123.0 (CTAF)</b>
------------------------	---	-------------------------------



ELEV 1010	TDZE 990
MIRL Rwy 17-35	
REIL Rwy 17 and 35	



CATEGORY	A	B	C	D
LPV DA		1240-7/8	250 (300-7/8)	
LNAV/VNAV DA		1285-1 1/8	295 (300-1 1/8)	
LNAV MDA		1360-1	370 (400-1)	
<b>C</b> CIRCLING	1540-1 530 (600-1)	1620-1 610 (700-1)	1700-2 690 (700-2)	1700-2 1/4 690 (700-2 1/4)

SE-1, 30 DEC 2021 to 27 JAN 2022

SE-1, 30 DEC 2021 to 27 JAN 2022