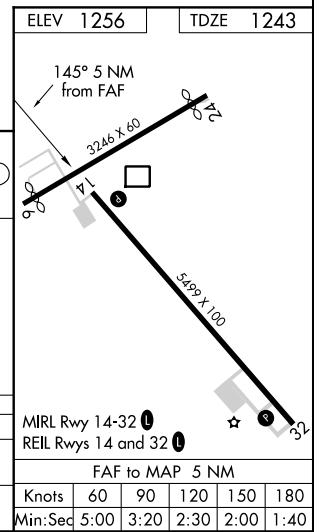
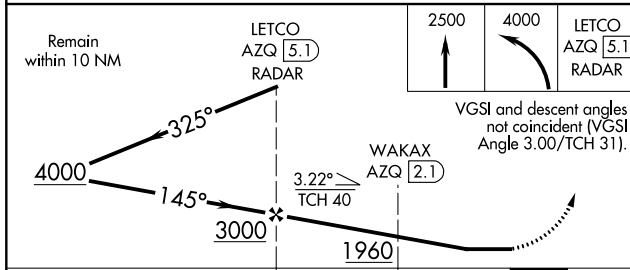
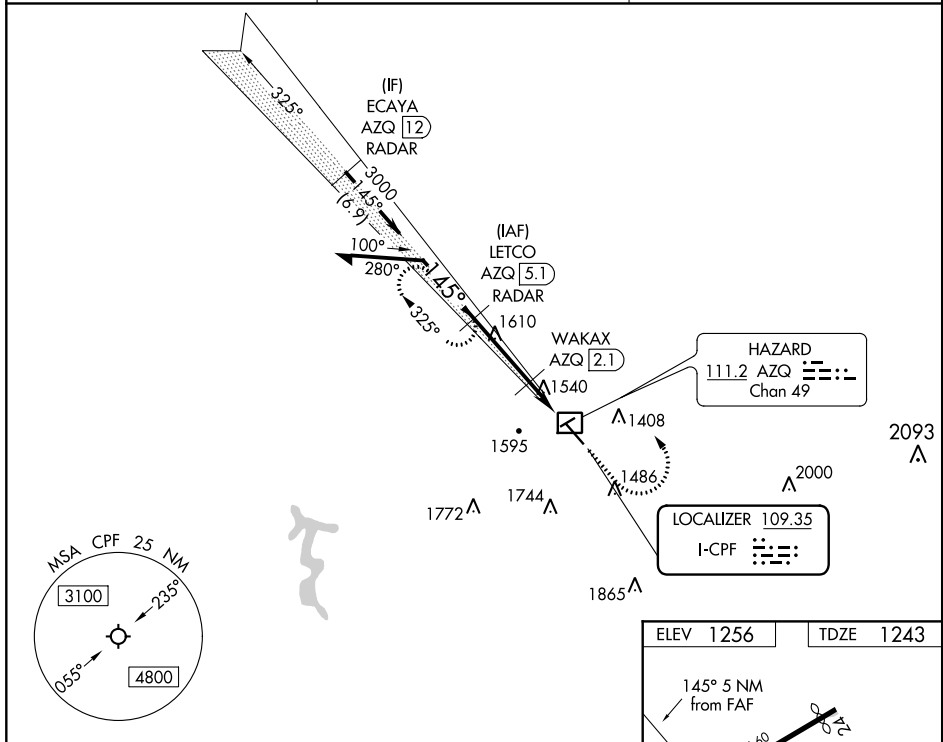


LOC I-CPF 109.35	APP CRS 145°	Rwy Idg 5499
		TDZE 1243
		Apt Elev 1256

LOC RWY 14

WENDELL H FORD (CPF)

DME required. RADAR required for procedure entry. RADAR required for missed approach.		MISSED APPROACH: Climb to 2500 then climbing left turn to 4000 to LETCO/AZQ 5.1 DME/RADAR and hold, continue climb-in-hold to 4000.
AWOS-3 119.025	INDIANAPOLIS CENTER 126.575 257.85	UNICOM 122.7 (CTAF) 0



SE-1, 30 DEC 2021 to 27 JAN 2022

SE-1, 30 DEC 2021 to 27 JAN 2022