

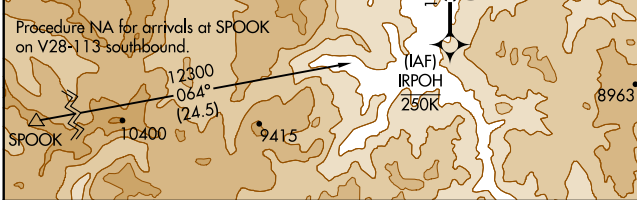
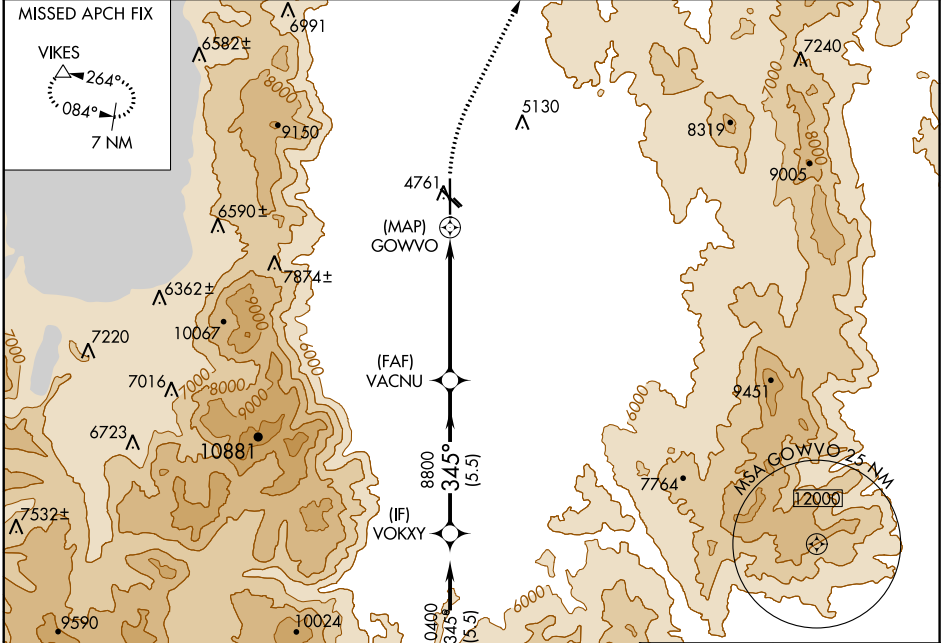
APP CRS 345°	Rwy Idg TDZE Apt Elev N/A N/A 4724
------------------------	--

RNAV (GPS)-B

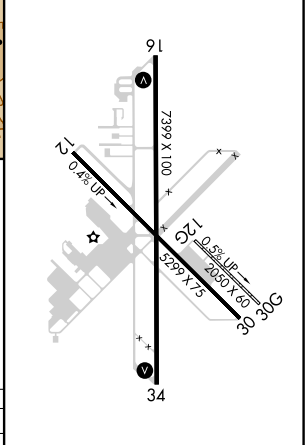
MINDEN-TAHOE (MEV)

RNP APCH.	<p>▼ Circling NA for Cat D southwest of Rwy 12 and 34.</p> <p>▲ Circling Rwy 12L, 30R NA at night.</p>	MISSED APPROACH: Climbing right turn to 11000 direct VIKES and hold, continue climb-in-hold to 11000.
-----------	--	---

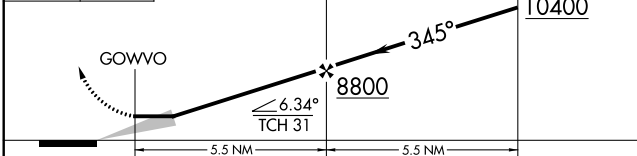
AWOS-3PT 119.325	NORCAL APP CON 119.2 279.55	CLNC DEL 133.25	UNICOM 123.05 (CTAF)
----------------------------	---------------------------------------	---------------------------	--------------------------------



ELEV 4724



11000	VIKES	VGSJ and descent angles not coincident (VGSJ Angle 3.00/TCH 31).	VOKXY
-------	-------	--	-------



CATEGORY	A	B	C	D
● CIRCLING	6480-1¼ 1756 (1800-1¼)	6480-1½ 1756 (1800-1½)	6480-3	1756 (1800-3)

HIRL Rwy 16-34 ●

SW-4, 30 DEC 2021 to 27 JAN 2022

SW-4, 30 DEC 2021 to 27 JAN 2022