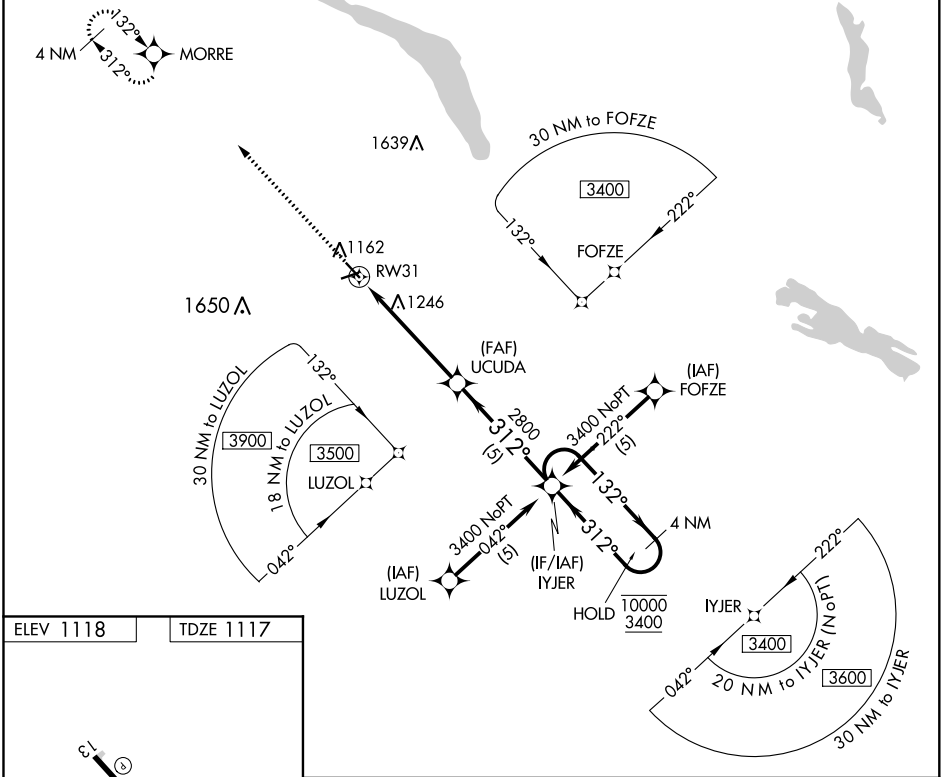


APP CRS	Rwy Idg	<b>4000</b>
<b>312°</b>	TDZE	<b>1117</b>
	Apt Elev	<b>1118</b>

# RNAV (GPS) RWY 31

MILBANK MUNI (1D1)

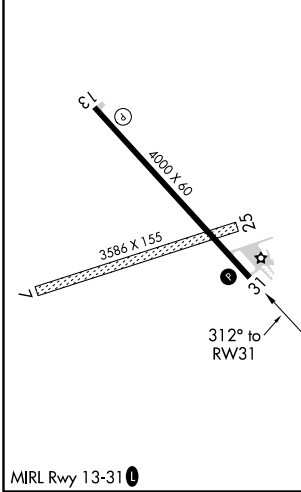
RNP APCH.	Rwy 31 helicopter visibility reduction below 3/4 SM NA. When local altimeter setting not received, use Ortonville Muni-Martinson Field altimeter setting and increase MDAs 20 feet.	MISSED APPROACH: Climb to 3400 direct MORRE and hold.
▽ ▲ NA		
MINNEAPOLIS CENTER <b>128.5 306.2</b>		AUNICOM <b>122.8 (CTAF) 0</b>



NC-1, 30 DEC 2021 to 27 JAN 2022

NC-1, 30 DEC 2021 to 27 JAN 2022

ELEV 1118	TDZE 1117
-----------	-----------



3400 MORRE	VGSi and descent angles not coincident (VGSi Angle 3.00/TCH 36).		IYJER	4 NM Holding Pattern
UCUDA	312°	132°	10000	3400
RW31	3.00° TCH 40	2800	5.2 NM	5 NM
CATEGORY	A	B	C	D
LNAV MDA	1720-1	603 (700-1)	NA	
CIRCLING	1720-1	602 (700-1)	NA	