

RNAV (GPS) Y RWY 18

PICAYUNE MUNI (MJD)

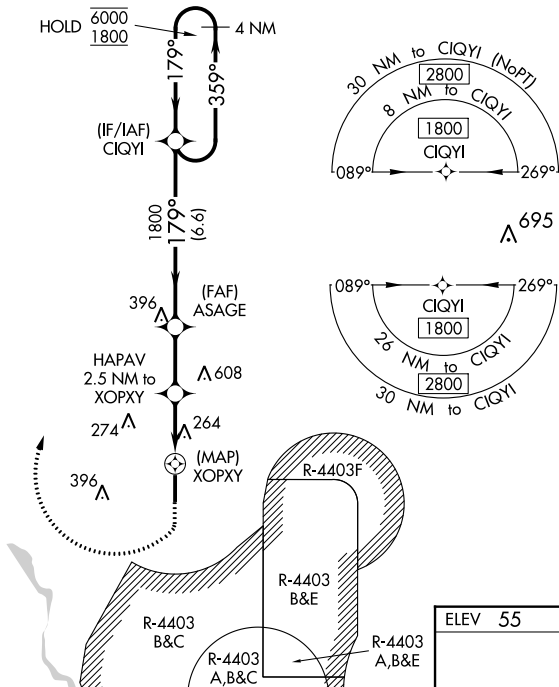
WAAS CH 42938	APP CRS 179°	Rwy Idg 5000
W18A		TDZE 55
		Apt Elev 55

RNP APCH.

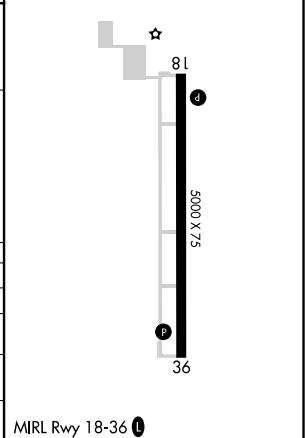
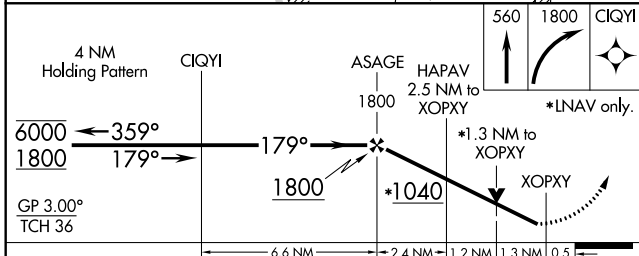
▼ Baro-VNAV and VDP NA when using Stennis Intl altimeter setting. Rwy 18 helicopter visibility reduction below $\frac{3}{4}$ SM NA. For uncompensated Baro-VNAV systems, LNAV/VNAV NA below -15°C or above 5°C. When local altimeter setting not received, use Stennis Intl altimeter setting: increase LPV DA to 377 and visibility all Cats $\frac{1}{8}$ mile; increase LNAV/VNAV DA to 621 and visibility all Cats $\frac{1}{8}$ mile; increase all MDA 40 feet. Procedure NA when R-4403 B/C/E is active.

MISSED APPROACH: (Do not exceed 185K) Climb to 560 then climbing right turn to 1800 direct CIQYI and hold.

AWOS-3PT 119.075	GULFPORT APP CON * 124.6 354.1	UNICOM 122.8 (CTAF) 0
----------------------------	--	---------------------------------



ELEV 55	TDZE 55
----------------	----------------



CATEGORY	A	B	C	D
LPV DA		343-1	288 (300-1)	
LNAV/VNAV DA		587-1 $\frac{7}{8}$	532 (600-1 $\frac{7}{8}$)	
LNAV MDA	520-1	465 (500-1)	520-1 $\frac{3}{8}$	465 (500-1 $\frac{3}{8}$)
C CIRCLING	520-1 465 (500-1)	580-1 525 (600-1)	NA	

SC-4, 30 DEC 2021 to 27 JAN 2022

SC-4, 30 DEC 2021 to 27 JAN 2022