

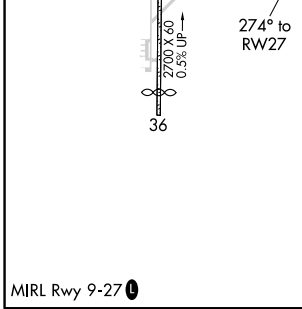
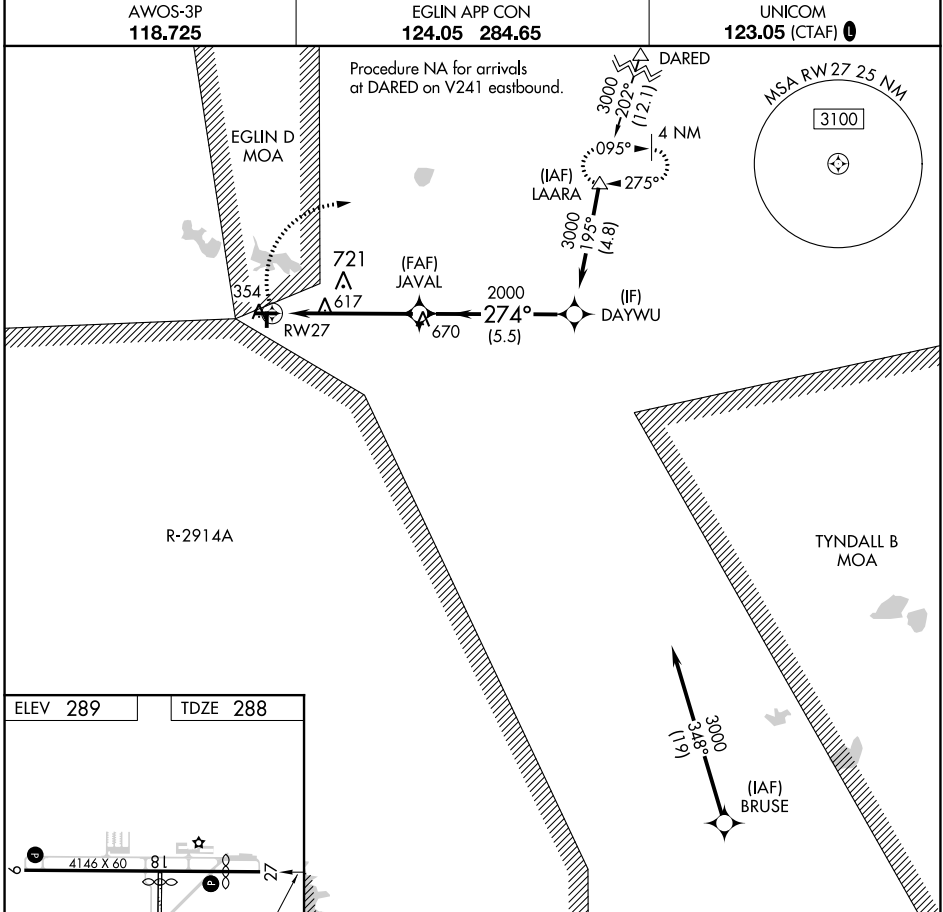
WAAS CH 97725 W27A	APP CRS 274°	Rwy Idg TDZE Apt Elev	3541 288 289
--	------------------------	-----------------------------	---

RNAV (GPS) RWY 27

DEFUNIAK SPRINGS (54J)

RNP APCH.
 ⚠ Circling NA to Rwy 18 and 36. Circling Rwy 9 NA at night.
 ⚠ Rwy 27 helicopter visibility reduction below $\frac{3}{4}$ SM NA.

MISSED APPROACH: Climbing right turn to 3000
 direct LAARA and hold.



ELEV 289	TDZE 288	Visual Segment - Obstacles.		DAYWU
3000 LAARA	1.7 NM to RWY 27	JAVAL	2000	3000
RWY 27	1.7 NM	3.6 NM	5.5 NM	
274° to RWY 27			274°	
3000 (191)	(IAF) BRUSE			
3000 (12.1)				
3000 (4.8)				
275°				
095°				
202°				
3000				
DARED				
4 NM				
MSA RW 27 25 NM	3100			
EGLIN D MOA				
721	(FAF) JAVAL			
617				
354				
RWY 27	670			
274°				
2000 (5.5)				
(IF) DAYWU				
R-2914A				
TYNDALL B MOA				
AWOS-3P 118.725	EGLIN APP CON 124.05 284.65	UNICOM 123.05 (CTAF)		

SE-3, 30 DEC 2021 to 27 JAN 2022

SE-3, 30 DEC 2021 to 27 JAN 2022