

APP CRS	Rwy Idg	3603
231°	TDZE	231
	Apt Elev	231

RNAV (GPS) RWY 23

BAMBERG COUNTY (99N)

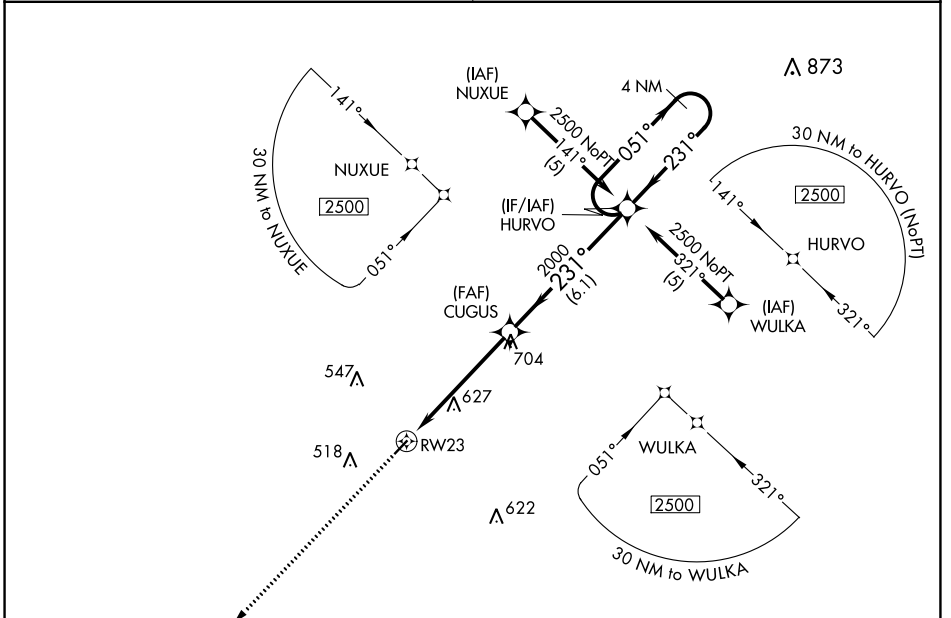
RNP APCH.

▽ Procedure NA at night.
△NA Rwy 23 helicopter visibility reduction below 1 SM NA.
 Use Orangeburg Muni altimeter setting; when not received, procedure NA.

MISSED APPROACH: Climb to 2500 direct JIKOM and hold.

COLUMBIA APP CON
124.15 338.2

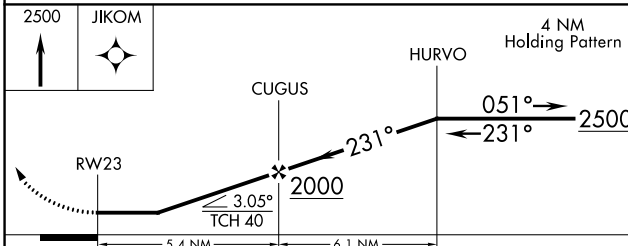
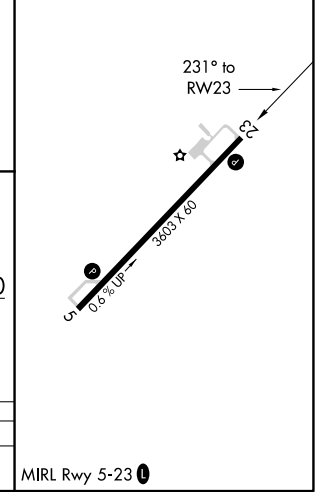
UNICOM
122.8 (CTAF) 0



SE-2, 30 DEC 2021 to 27 JAN 2022

SE-2, 30 DEC 2021 to 27 JAN 2022

ELEV 231	TDZE 231
----------	----------



CATEGORY	A	B	C	D
LNAV MDA	920-1	689 (700-1)	NA	

MIRL Rwy 5-23 0