

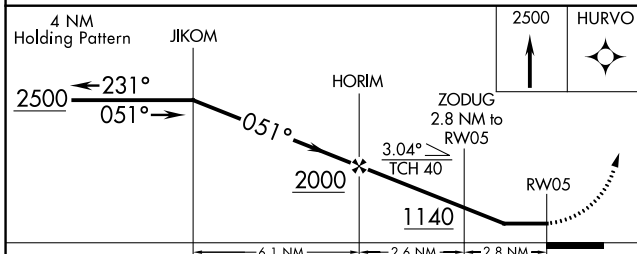
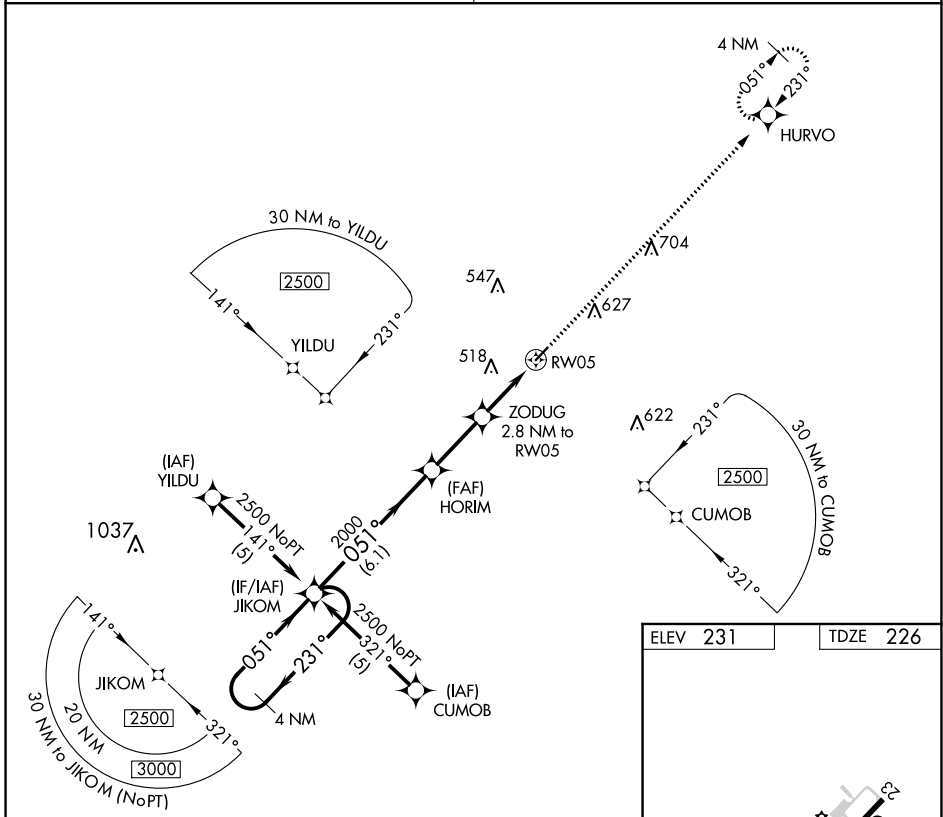
APP CRS	Rwy Idg	3603
051°	TDZE	226
	Apt Elev	231

RNAV (GPS) RWY 5

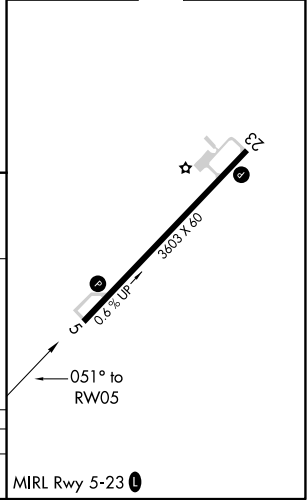
BAMBERG COUNTY (99N)

RNP APCH.	Procedure NA at night. Rwy 5 helicopter visibility reduction below 1 SM NA. Use Orangeburg Muni altimeter setting; when not received, procedure NA.	MISSED APPROACH: Climb to 2500 direct HURVO and hold.
Procedure NA at night. Rwy 5 helicopter visibility reduction below 1 SM NA. Use Orangeburg Muni altimeter setting; when not received, procedure NA.		

COLUMBIA APP CON	UNICOM
124.15 338.2	122.8 (CTAF) 0



ELEV 231	TDZE 226
----------	----------



CATEGORY	A	B	C	D
LNAV MDA	740-1	514 (600-1)	NA	NA

SE-2, 30 DEC 2021 to 27 JAN 2022

SE-2, 30 DEC 2021 to 27 JAN 2022