

APP CRS	Rwy Idg	<b>5324</b>
<b>285°</b>	TDZE	<b>393</b>
	Apt Elev	<b>393</b>

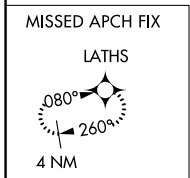
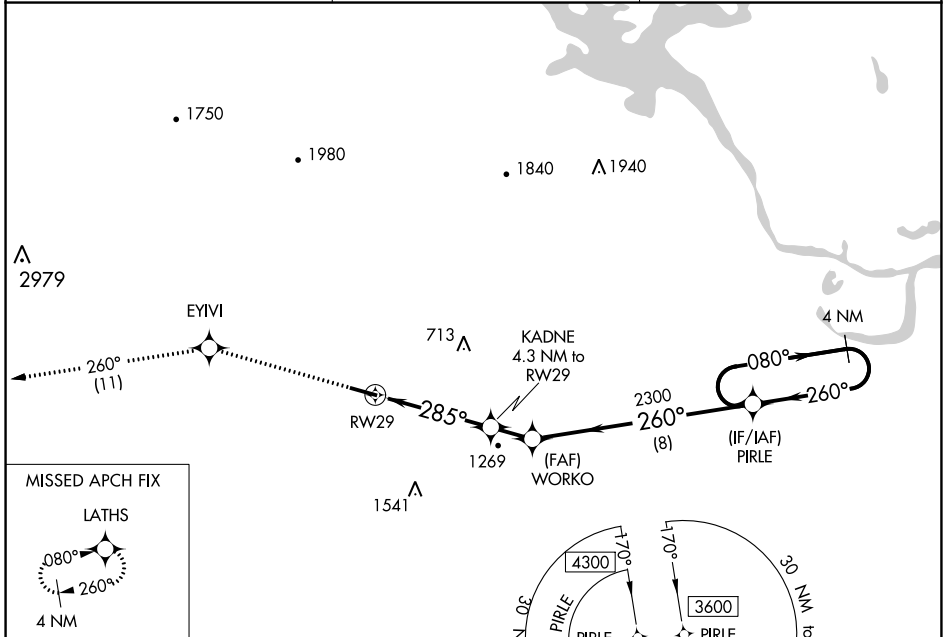
# RNAV (GPS) RWY 29

DANVILLE MUNI (32A)

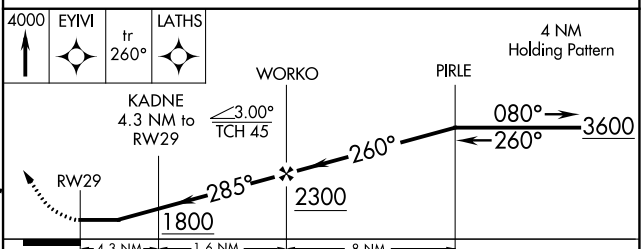
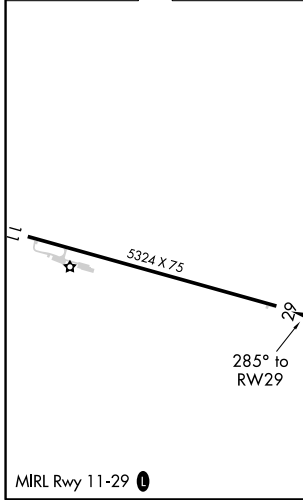
**⚠** Circling NA for Cat D south of Rwy 11-29. DME/DME RNP-0.3 NA. Procedure NA at night. Helicopter visibility reduction below 1 SM NA. Use Russellville altimeter setting, when not received procedure NA.

**⚠** NA MISSED APPROACH: Climb to 4000 direct EYVI and on track 260° to LATHS and hold.

RUE ASOS <b>132.475</b>	MEMPHIS CENTER <b>128.475 377.15</b>	CTAF <b>122.9</b>
----------------------------	---	----------------------



ELEV 393	TDZE 393
----------	----------



CATEGORY	A	B	C	D
LNNAV MDA	840-1	447 (500-1)	840-1 3/8	447 (500-1 3/8)
<b>C</b> CIRCLING	1040-1 647 (700-1)	1060-1 667 (700-1)	1060-1 3/4 667 (700-1 3/4)	1480-3 1087 (1100-3)

SC-1, 30 DEC 2021 to 27 JAN 2022

SC-1, 30 DEC 2021 to 27 JAN 2022