

AWOS-3  
119.275  
CASCADE APP CON ★  
119.6  
CTAF  
122.7

EUGENE	
112.9 EUG	☰☷
Chan 76	
N44°07.25'-W123°13.37'	
L-1, H-1	



NOTE: RADAR required.

### TAKEOFF MINIMUMS

Rwy 16: NA - Obstacles.

Rwy 34: 600-2½ with minimum climb of 220' per NM to 1700, or standard with minimum climb of 365' per NM to 1300; or 2300-3 for VCOA.

### TAKEOFF OBSTACLE NOTES

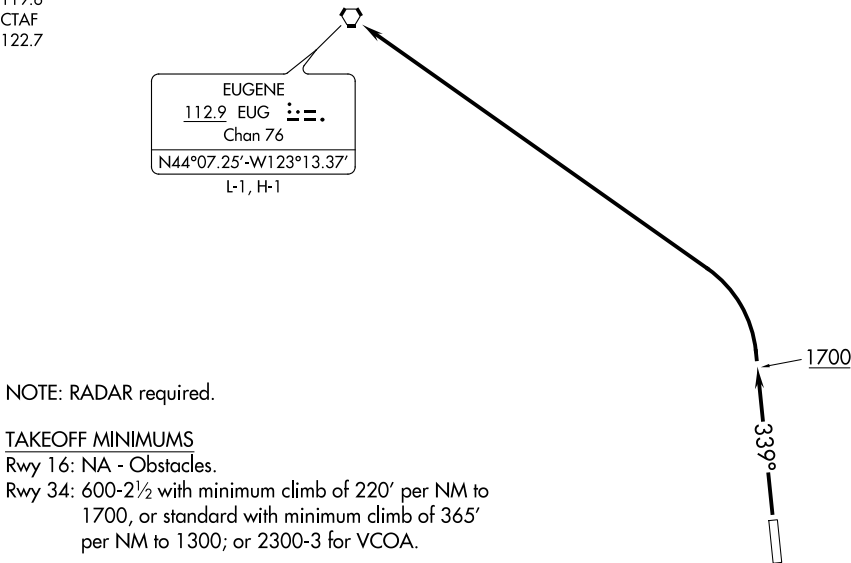
- Rwy 34: Vegetation 79' from DER, 268' right of centerline, 548' MSL.
- Fence 197' from DER, 278' right of centerline, 8' AGL/550' MSL.
- Tree 269' from DER, 287' right of centerline, 562' MSL.
- Traverse way beginning 438' from DER, 593' left of centerline, up to 557' MSL.
- Tree, transmission line beginning 879' from DER, 434' left of centerline, up to 573' MSL.
- Pole 1061' from DER, 374' right of centerline, up to 586' MSL.
- Pole 1122' from DER, 172' left of centerline, 36' AGL/580' MSL.
- Pole, traverse way beginning 1134' from DER, 334' left of centerline, up to 61' AGL/605' MSL.
- Pole, tree beginning 1214' from DER, 322' left of centerline, up to 616' MSL.
- Trees beginning 2367' from DER, 960' right of centerline, up to 629' MSL.
- Trees beginning 2448' from DER, 473' left of centerline, up to 643' MSL.
- Trees 3232' from DER, 1009' left of centerline, 657' MSL.
- Trees beginning 1.7 NM from DER, 2451' right of centerline, up to 1000' MSL.
- Trees beginning 1.8 NM from DER, 2877' right of centerline, up to 1040' MSL.
- Trees beginning 1.9 NM from DER, 1338' right of centerline, up to 98' AGL/1047' MSL.

NOTE: Chart not to scale.

### DEPARTURE ROUTE DESCRIPTION

TAKEOFF RUNWAY 34: Climb heading 339° to 1700, then climbing left turn to 4000 direct EUG VORTAC.

VCOA RUNWAY 34: Obtain ATC approval for VCOA when requesting IFR clearance. Cross Hobby Fld at or above 2700 before preceding on course.



NW-1, 30 DEC 2021 to 27 JAN 2022

NW-1, 30 DEC 2021 to 27 JAN 2022