

APP CRS	Rwy Idg	N/A
088°	TDZE	N/A
	Apt Elev	110

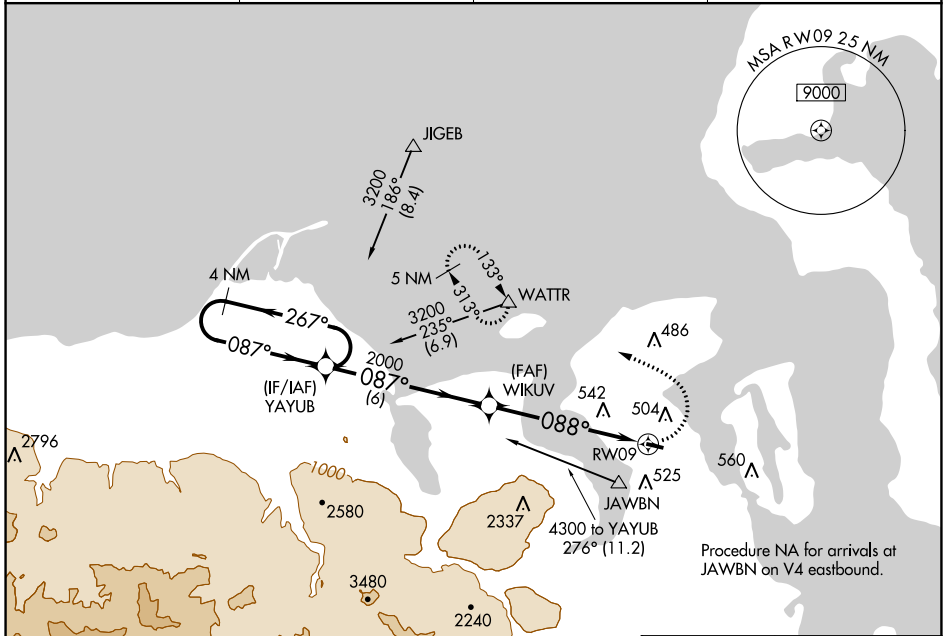
RNAV (GPS)-A

JEFFERSON COUNTY INTL (ØS9)

Use AJ Eisenberg altimeter setting; when not received use Whidbey Island NAS/Ault Field altimeter setting and increase all MDA 20 feet.
 DME/DME RNP: 0.3 NA. Procedure NA at night. Helicopter visibility reduction below 1 SM not authorized.

MISSED APPROACH: Climbing left turn to 5400 direct WATTR and hold, continue climb-in-hold to 5400.

AWOS-3P 119.025	OKH AWOS-3 132.775	WHIDBEY APP CON 118.2	CTAF 123.0
---------------------------	------------------------------	---------------------------------	----------------------

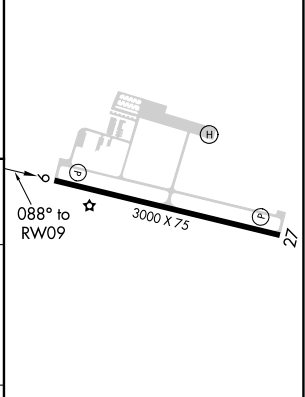
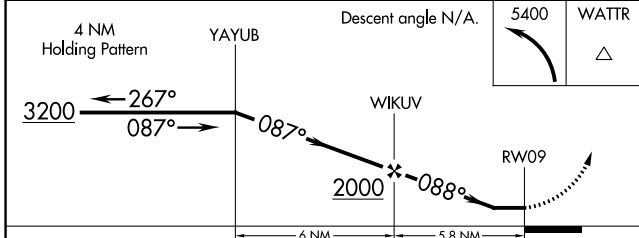


NW-1, 30 DEC 2021 to 27 JAN 2022

NW-1, 30 DEC 2021 to 27 JAN 2022



ELEV 110



CATEGORY	A	B	C	D
CIRCLING	1000-1¼	890 (900-1¼)		NA

REIL Rwy 9 and 27
 MRL Rwy 9-27