

APP CRS <b>070°</b>	Rwy Idg TDZE Apt Elev	<b>N/A</b> <b>N/A</b> <b>1564</b>
------------------------	-----------------------------	---

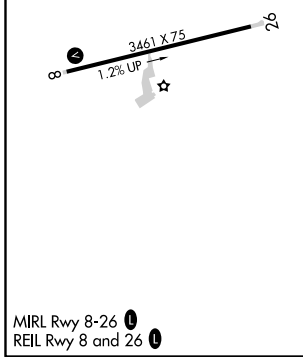
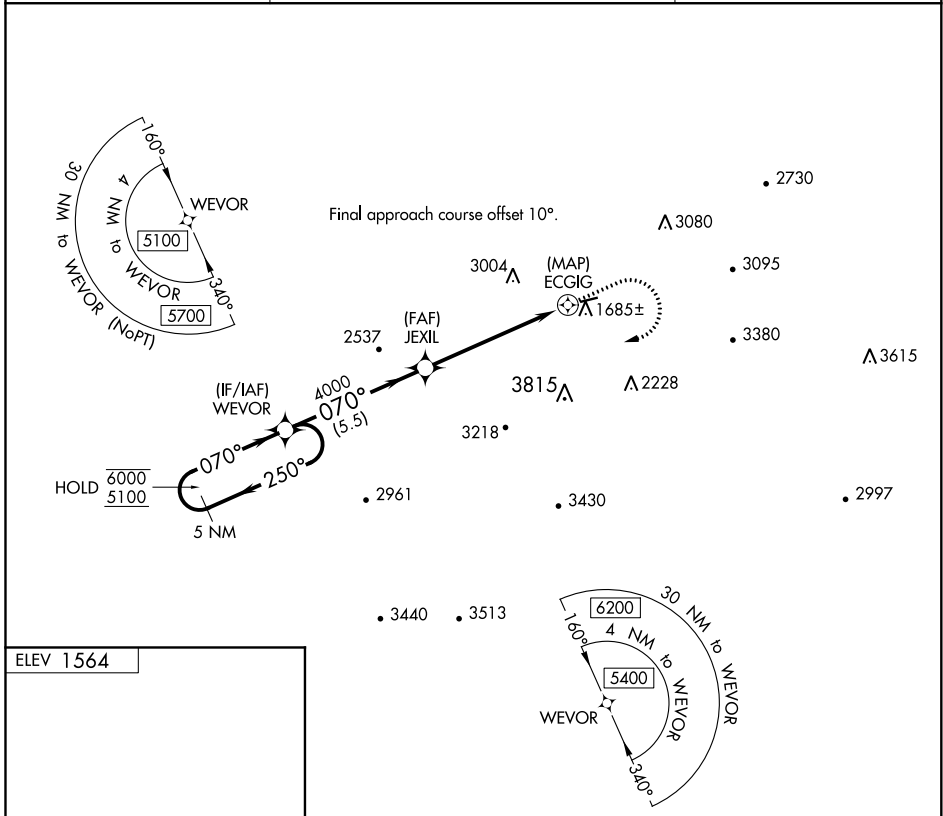
# RNAV (GPS)-A

TUCKER-GUTHRIE MEML (I35)

RNP APCH. MISSED APPROACH: Climb to 4200 then climbing right turn to 5100 direct WEVOR and hold.

**⚠** Circling NA north of Rwy 8-26. Procedure NA at night.  
**⚠** Rwy 8 helicopter visibility reduction below 1 SM NA.

AWOS-3 <b>118.35</b>	INDIANAPOLIS CENTER <b>124.625 371.925</b>	UNICOM <b>122.8 (CTAF) 0</b>
-------------------------	---	---------------------------------



VGSI and descent angles not coincident (VGSI Angle 5.00/TCH 26).

5 NM Holding Pattern	WEVOR	JEXIL	ECGIG
6000 ← 250°	5100 → 070°	4000	3.77% TCH 40
		5.5 NM	5.6 NM
0.5 NM			
4200	5100	WEVOR	

CATEGORY	A	B	C	D
<b>0</b> CIRCLING	2920-1¼ 1356 (1400-1¼)	2920-1½ 1356 (1400-1½)	3360-3 1796 (1800-3)	NA

SE-1, 30 DEC 2021 to 27 JAN 2022

SE-1, 30 DEC 2021 to 27 JAN 2022