

RNAV (GPS) RWY 20

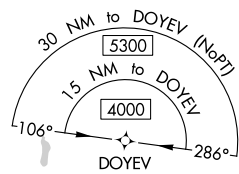
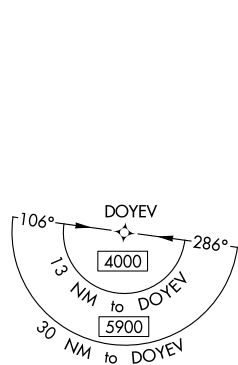
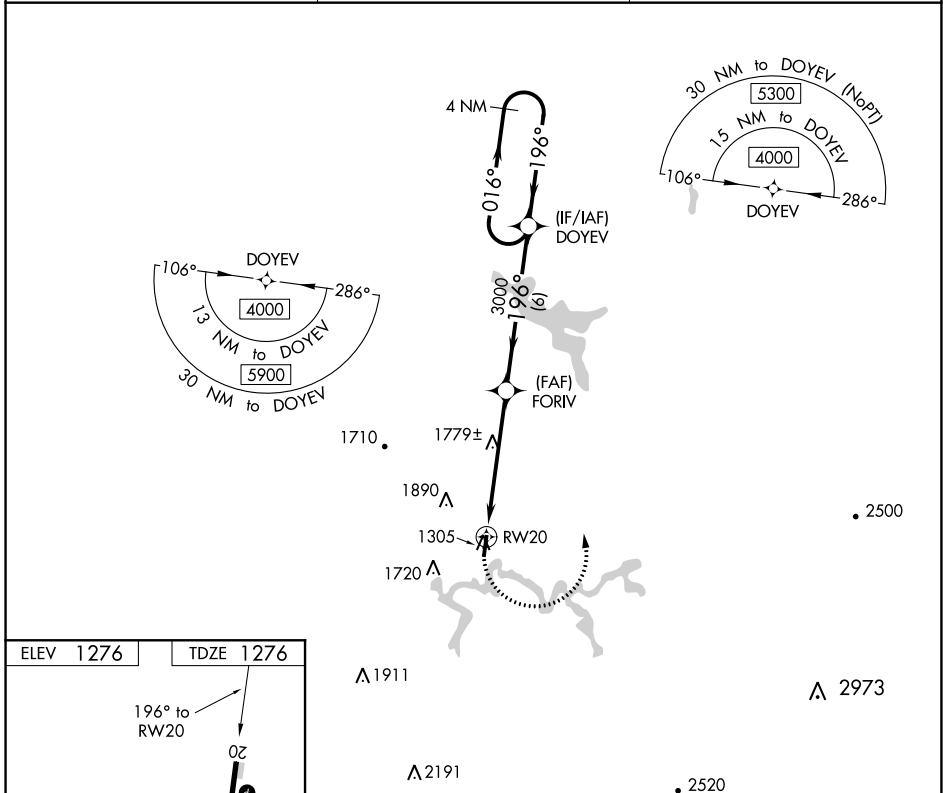
BRAXTON COUNTY (48I)

APP CRS 196°	Rwy Idg 3995
	TDZE 1276
	Apt Elev 1276

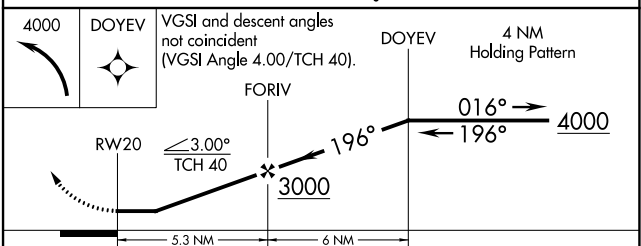
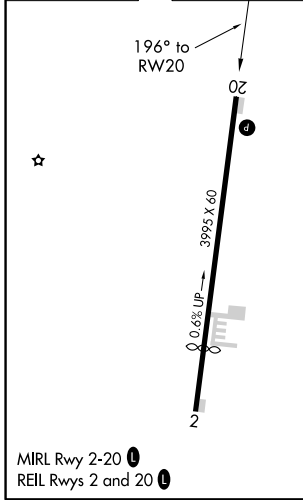
NA DME/DME RNP-0.3 NA. Procedure NA at night. Helicopter visibility reduction below 1 SM NA. When local altimeter setting not received, use Clarksburg altimeter setting and increase all MDA 260 feet. Increase LNAV Cat A/B visibility ¼ mile, LNAV Cat C visibility ½ mile, and Circling Cat A visibility ¼ mile.

MISSED APPROACH: Climbing left turn to 4000 direct DOYEV and hold.

AWOS-3P 118.225	CLARKSBURG APP CON ★ 121.15 284.65	CTAF 122.9 0
---------------------------	--	------------------------



ELEV 1276	TDZE 1276
-----------	-----------



CATEGORY	A	B	C	D
LNAV MDA	2060-1 784 (800-1)	2060-1 ¼ 784 (800-1 ¼)	2060-2 ½ 784 (800-2 ½)	NA
C CIRCLING	2060-1 784 (800-1)	2240-1 ½ 964 (1000-1 ½)	2240-3 964 (1000-3)	NA

NE-4, 30 DEC 2021 to 27 JAN 2022

NE-4, 30 DEC 2021 to 27 JAN 2022