

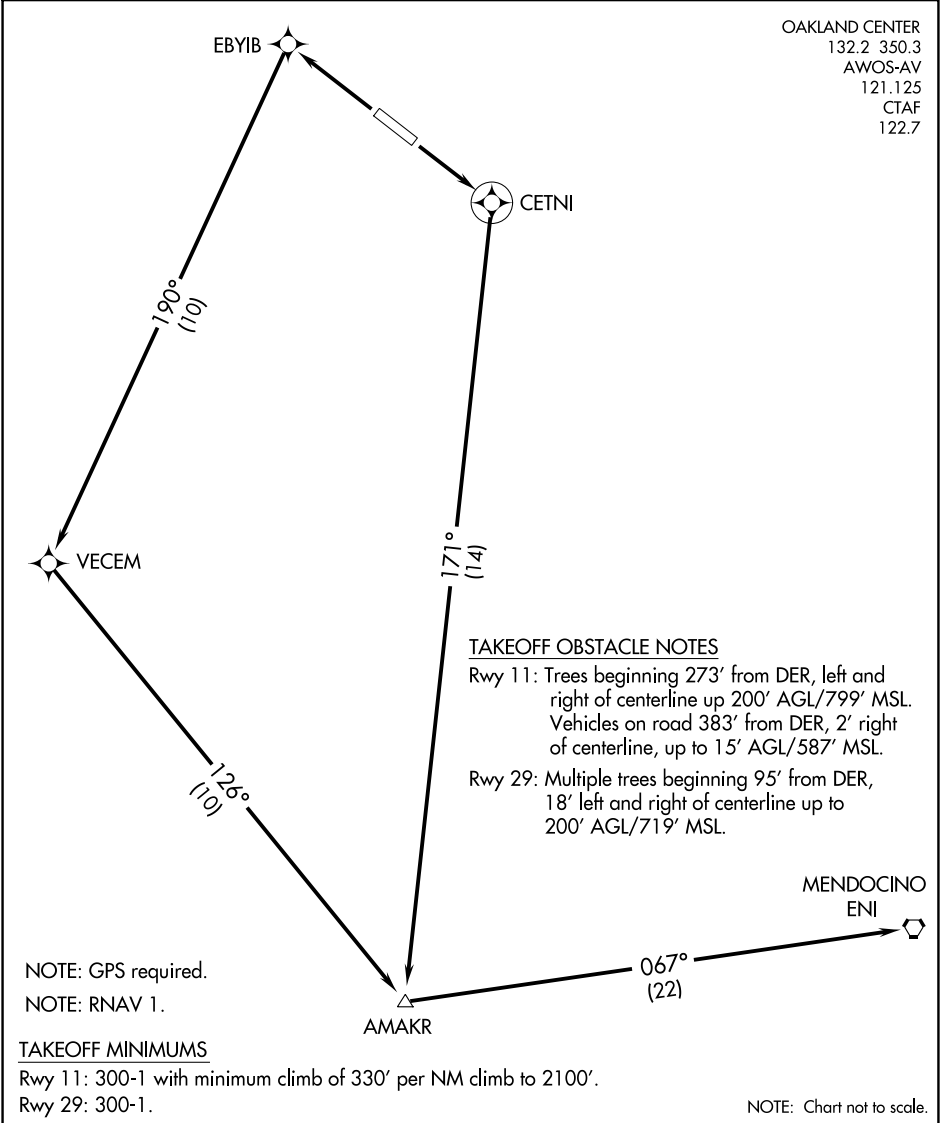
(LTLRV1.LTLRV) 16091

SL-10390 (FAA)

LITTLE RIVER ONE DEPARTURE (OBSTACLE) (RNAV)

LITTLE RIVER (L.L.R)
LITTLE RIVER, CALIFORNIA

OAKLAND CENTER
132.2 350.3
AWOS-AV
121.125
CTAF
122.7



TAKEOFF OBSTACLE NOTES

Rwy 11: Trees beginning 273' from DER, left and right of centerline up 200' AGL/799' MSL. Vehicles on road 383' from DER, 2' right of centerline, up to 15' AGL/587' MSL.

Rwy 29: Multiple trees beginning 95' from DER, 18' left and right of centerline up to 200' AGL/719' MSL.

NOTE: GPS required.

NOTE: RNAV 1.

TAKEOFF MINIMUMS

Rwy 11: 300-1 with minimum climb of 330' per NM climb to 2100'.

Rwy 29: 300-1.

NOTE: Chart not to scale.

DEPARTURE ROUTE DESCRIPTION

TAKEOFF RUNWAY 11: Climb to 6000 direct CETNI and via track 171° to AMAKR and left turn via track 067° to ENI VORTAC, thence . . .

TAKEOFF RUNWAY 29: Climb to 6000 direct EBYIB and left turn via track 190° to VECEM and via track 126° to AMAKR and via track 067° to ENI VORTAC, thence via assigned route.

LITTLE RIVER ONE DEPARTURE (OBSTACLE) (RNAV)

(LTLRV1.LTLRV) 03JUN10

LITTLE RIVER, CALIFORNIA
LITTLE RIVER (L.L.R)

SW-2, 30 DEC 2021 to 27 JAN 2022

SW-2, 30 DEC 2021 to 27 JAN 2022