

WAAS CH 77619 W18A	APP CRS 183°	Rwy Idg TDZE 4600 3326 Apt Elev 3326
--	------------------------	--

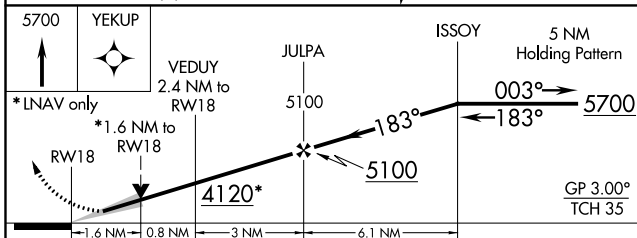
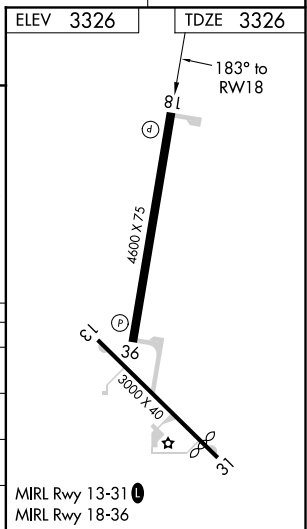
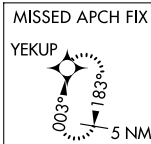
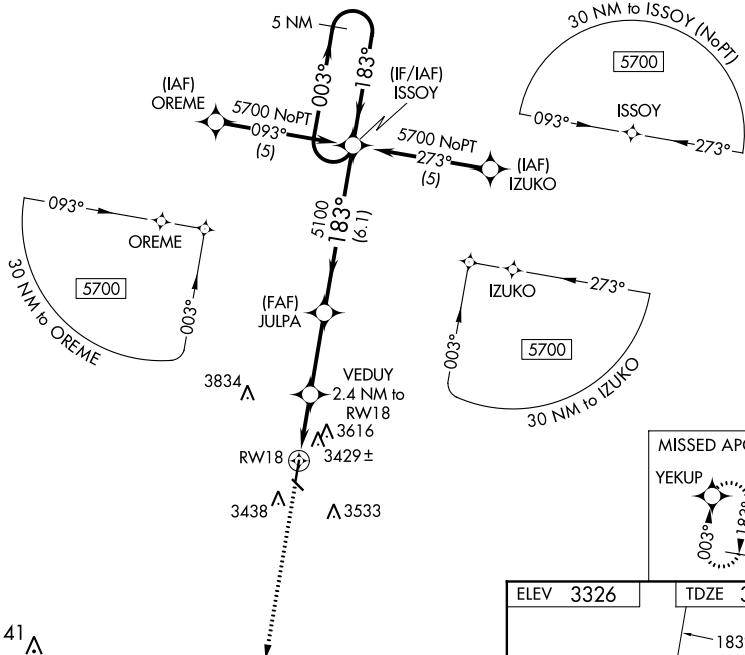
RNAV (GPS) RWY 18

SYRACUSE-HAMILTON COUNTY MUNI (3K3)

⚠ Baro-VNAV NA when using Lamar altimeter setting. For uncompensated Baro-VNAV systems, LNAV/VNAV NA below -21°C (-5°F) or above 54°C (130°F). DME/DME RNP-0.3 NA. When local altimeter setting not received, use Lamar altimeter setting and increase all DA 157 feet and all MDA 160 feet; increase LPV all Cats, LNAV/VNAV all Cats and LNAV Cat C visibility ½ mile, Circling Cat B visibility ¼ mile and Circling Cat C visibility ¾ mile. VDP NA when using Lamar altimeter setting. Circling to Rwy 13/31 NA at night.

MISSED APPROACH: Climb to 5700 direct YEKUP and hold.

AWOS-3 119.975	DENVER CENTER 133.4 377.175	UNICOM 122.8 (CTAF) 0
--------------------------	---------------------------------------	---------------------------------



CATEGORY	A	B	C	D
LPV DA	3576-1 250 (300-1)			NA
LNAV/VNAV DA	3939-2¼ 613 (700-2¼)			NA
LNAV MDA	3860-1 534 (600-1)	3860-1½ 534 (600-1½)		NA
CIRCLING	3860-1 534 (600-1)	3980-1 654 (700-1)	3980-1¾ 654 (700-¾)	NA

NC-2, 30 DEC 2021 to 27 JAN 2022

NC-2, 30 DEC 2021 to 27 JAN 2022