

APCH CRS	Rwy Idg	50
037°	TDZE	1707
	Arpt Elev	1707

AL-11678 [USN]

BLUEGRASS (9VA5)

Obtain local altimeter on Bluegrass Advsy, when not rcvd use DULLES Intl altimeter.
 FEMA SPECIAL FACILITY (Bluegrass) normal opr 0745-1630L Mon-Fri.
 Phone 504-542-3014 for PPR.

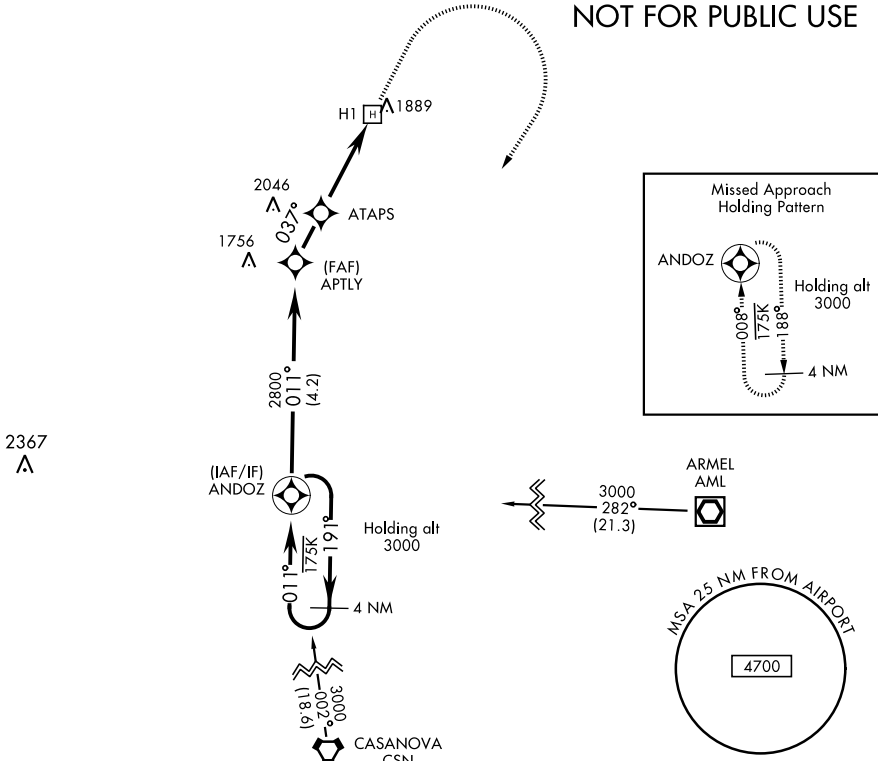
MISSED APPROACH: Climb to 2700 then climbing right turn to 3000 direct ANDOZ and hold.

POTOMAC APP CON
120.45 306.925

BLUEGRASS ADVISORY ★
126.2 241.0

DME/DME RNP-0.3 NA
 Visibility reduction by Helicopters NA.

**RESTRICTED
 NOT FOR PUBLIC USE**



EMERG SAFE ALT 100 NM 6200

		<table border="1"> <tr> <td>2000</td> <td>3000</td> <td>ANDOZ</td> </tr> <tr> <td>↑</td> <td>↻</td> <td>⊙</td> </tr> </table>	2000	3000	ANDOZ	↑	↻	⊙	ELEV 1707	TDZE 1707
2000	3000	ANDOZ								
↑	↻	⊙								
CATEGORY	COPTER									
LNAY MDA	2220-1	513	(600-1)							
WASHINGTON DULLES INTL ALTIMETER SETTING										
LNAY MDA	2460-1	753	(800-1)							

NE-3, 30 DEC 2021 to 27 JAN 2022

NE-3, 30 DEC 2021 to 27 JAN 2022