

# COPTER VOR/DME or TACAN 056°

VORTAC LDN <b>114.3</b> Chan <b>90</b>	APCH CRS <b>056°</b>	Rwy ldg TDZE <b>1707</b> Arpt Elev <b>1707</b>
--	-------------------------	--

AL-11678 [USN]

BLUEGRASS (9VA5)

Circling not authorized.  
Visibility reduction by helicopter NA.

MISSED APPROACH: Climb to 3000, then climbing right turn to 4000, intercept LDN VORTAC R-056 to WLCAT and hold.

POTOMAC APP CON <b>120.45 306.925</b>	BLUEGRASS ADVISORY ★ <b>126.2 241.0</b>
--	--

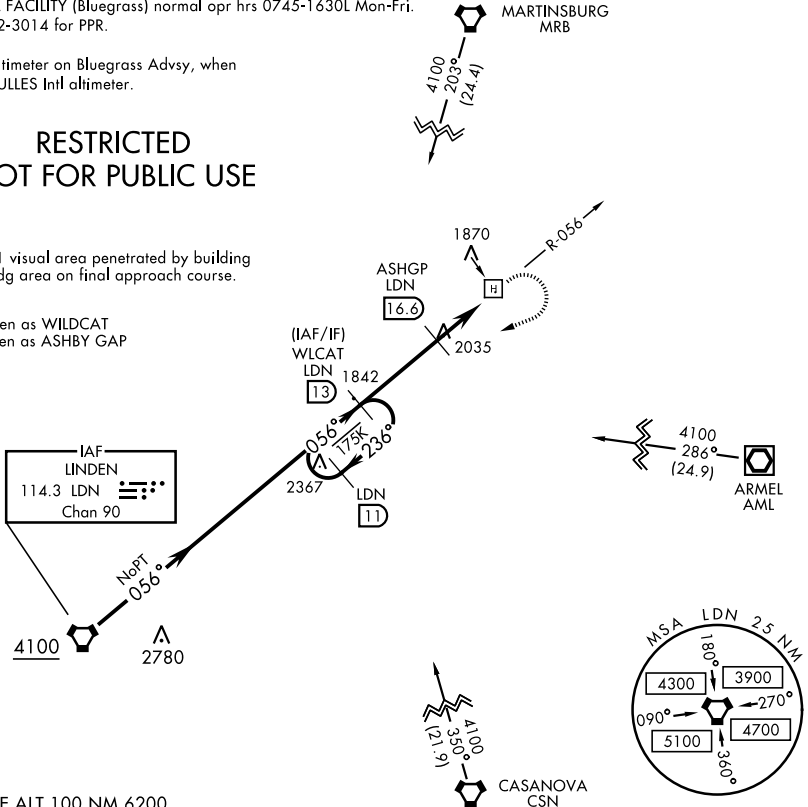
FEMA SPECIAL FACILITY (Bluegrass) normal opr hrs 0745-1630L Mon-Fri.  
Phone 540-542-3014 for PPR.

Obtain local altimeter on Bluegrass Advsy, when not rcvd use DULLES Intl altimeter.

## RESTRICTED NOT FOR PUBLIC USE

CAUTION: 20:1 visual area penetrated by building 500' prior to ldg area on final approach course.

WLCAT - spoken as WILDCAT  
ASHGP - spoken as ASHBY GAP



NE-3, 30 DEC 2021 to 27 JAN 2022

NE-3, 30 DEC 2021 to 27 JAN 2022

EMERG SAFE ALT 100 NM 6200

2 NM holding pattern	3000	4000	WLCAT LDN 13	ELEV 1707	TDZE 1707
CATEGORY	COPTER				
H-056	2380-1	673	(700-1)		
DULLES INTL ALTIMETER SETTING					
H-056	2640-1¼	933	(1000-1¼)		

# COPTER VOR/DME or TACAN 056°