

## GALENA

EDWARD G PITKA SR (GAL)(PAGA) 0 NW UTC-9(-8DT) N64°44.17' W156°56.07'

FAIRBANKS

154 B NOTAM FILE GAL

H-1A, 2J, L-3C, 4I

RWY 08-26: H600X100 (ASPH) S-110, D-144, 2D-240

IAP, DIAP, AD

PCN 62 F/C/X/T MIRL

RWY 08: Thld dsplcd 400'.

RWY 26: Thld dsplcd 800'. Road.

RWY 06-24: 2600X50 (GRVL)

## RUNWAY DECLARED DISTANCE INFORMATION

RWY 08: TORA-6000 TODA-6000 ASDA-6000

LDA-5600

RWY 26: TORA-6000 TODA-6000 ASDA-6000

LDA-5200

SERVICE: FUEL 100LL, JET A LGT ACTVT MIRL Rwy

08-26—CTAF.

AIRPORT REMARKS: Attended Oct-Apr, Mon-Fri 1500-0200Z±. Fuel,

Sun-Sat 1700-0200Z±. Call out fee after hrs

907-656-1875/7066. Arpt maint duty hrs Mon-Fri

1700-0100Z± except hol. Ultralights on and invof arpt. Acft may

be closer to landing surface than they appear to pilot. Possible

windshear below 2000 ft AGL on final apch to Rwy 08 and Rwy

26. Snow removal operations—monitor CTAF. Arpt hazardous

reporting only performed during duty hrs unless prior

arrangement in writing with arpt mgmt, P.O. Box 09, Galena AK

99741.

AIRPORT MANAGER: 907-656-1236

WEATHER DATA SOURCES: AWOS-3P 132.525 (907) 656-2483. (WX CAM)

COMMUNICATIONS: CTAF 123.0

GALENA RCO 122.2 (FAIRBANKS RADIO)

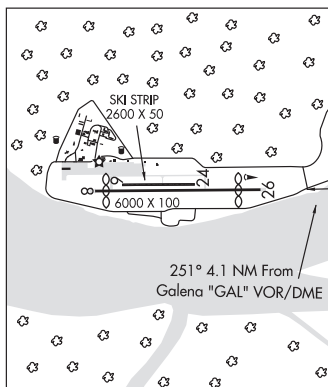
ANCHORAGE CENTER APP/DEP CON 127.0 290.2

AIRSPACE: CLASS E svc continuous.

RADIO AIDS TO NAVIGATION: NOTAM FILE GAL.

GALENA (H) (H) VOR/DME 114.8 GAL Chan 95 N64°44.29' W156°46.63' 251° 4.1 NM to fld. 152/17E.

COMM/NAV/WEATHER REMARKS: For a toll free call to Fairbanks FSS dial 1-866-248-6516.



GALENA N64°44.29' W156°46.63' NOTAM FILE GAL.

FAIRBANKS

(H) (H) VOR/DME 114.8 GAL Chan 95 251° 4.1 NM to Edward G Pitka Sr. 152/17E.

H-1A, 2J, L-3C, 4I

RCO 122.2 (FAIRBANKS RADIO)

GAMBELL (GAM)(PAGM) 0 SW UTC-9(-8DT) N63°46.00' W171°43.97'

BETHEL

30 B NOTAM FILE GAM

H-1A, L-4G

RWY 16-34: H4500X100 (ASPH-CONC-NONE) S-22 MIRL

IAP

RWY 16: REIL. VASI(V4L)—GA 3.0° TCH 37'. Antenna. Rgt tfc.

RWY 34: ODALS. REIL. VASI(V4R)—GA 3.0° TCH 39'.

SERVICE: LGT ACTVT ODALS Rwy 34; REIL Rwy 16 and Rwy 34; VASI

Rwy 16 and Rwy 34; MIRL Rwy 16-34—CTAF.

AIRPORT REMARKS: Unattended. Cold temperature restricted airport.

Altitude correction required at or below -27C. Rwy condition not

monitored; recommend visual inspection prior to landing. 98 ft twr

(lgtl) 3400 ft fm apch end Rwy 16. Rwy 16-34 safety areas soft and

loose gravel.

AIRPORT MANAGER: 907-443-2500

WEATHER DATA SOURCES: AWOS-3P 125.9 (907) 985-5733. (WX CAM)

COMMUNICATIONS: CTAF 122.7

RCO 122.0 (NOME RADIO)

ANCHORAGE CENTER APP/DEP CON 132.2

RADIO AIDS TO NAVIGATION: NOTAM FILE GAM.

NDB/DME (MHW) 369 GAM Chan 92 N63°46.91'

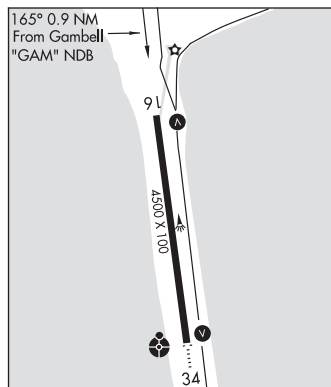
W171°44.21' at fld. 30/8E.

DME unusable:

070°-135° byd 9 NM blo 10,000'

COMM/NAV/WEATHER REMARKS: For a toll free call to Nome FSS dial

800-478-8400. For a toll free call to Fairbanks FSS dial 1-866-248-6516. DME chan 92 paired with VHF freq 114.5.



GANNON'S LANDING (See WASILLA on page 260)