

JERSEY SHORE (P96) 2 E UTC-5(-4DT) N41°12.39' W77°13.55'

DETROIT

554 B NOTAM FILE IPT

RWY 09-27: 3059X130 (TURF) LIRL 0.5% up W**RWY 09:** Thld dspcd 300'. Road.**SERVICE:** LGT ACTIVATE LIRL Rwy 09-27, and wind indicator—CTAF. Rwy 09-27 outlined with reflectors, and rwy lgts.**AIRPORT REMARKS:** Attended on call. Deer on and invof arpt. Parl twy adj Rwy 09-27 clsd.**AIRPORT MANAGER:** 570-398-1391**COMMUNICATIONS:** CTAF/UNICOM 122.7**CLEARANCE DELIVERY PHONE:** For CD ctc New York ARTCC at 631-468-1425.**JOHN MURTHA JOHNSTOWN/CAMBRIA CO** (See JOHNSTOWN on page 284)**JOHNSTOWN****JOHN MURTHA JOHNSTOWN/CAMBRIA CO** (JST)(KJST) P (ANG ARNG AR) 3 NE UTC-5(-4DT)

DETROIT

N40°18.93' W78°50.08'

H-10H, 121, L-29D

2284 B Class I, ARFF Index A NOTAM FILE JST

IAP, DIAP, AD

RWY 15-33: H7004X150 (CONC-GRVD) S-93, D-183, 2D-357, 2D/2D2-845 PCN 61 R/B/W/U HIRL**RWY 15:** VASI(V4L)—GA 3.0° TCH 52'. Trees.**RWY 33:** MALSR. PAPI(P4R)—GA 3.0° TCH 53'. Trees.**RWY 05-23:** H4387X100 (ASPH-GRVD) S-62, D-87, 2S-110 PCN 39 F/A/W/T MIRL**RWY 05:** REIL. PAPI(P4L)—GA 3.0° TCH 44'.**RWY 23:** REIL. VASI(V4L)—GA 3.0° TCH 45'. Bldg.**RUNWAY DECLARED DISTANCE INFORMATION****RWY 05:** TORA-4386 TODA-4386 ASDA-4386 LDA-4386**RWY 15:** TORA-7003 TODA-7003 ASDA-7003 LDA-7003**RWY 23:** TORA-4386 TODA-4386 ASDA-4386 LDA-4386**RWY 33:** TORA-7003 TODA-7003 ASDA-7003 LDA-7003**SERVICE:** S4 FUEL 100LL, JET A LGT When twr clsd ACTIVATE MALSR Rwy 33, HIRL Rwy 15-33, PAPI Rwy 33, twy lgts Twy A, Twy B, Twy G, and main terminal apron—CTAF. MIRL Rwy 05-23 unavailable when twr clsd. **MILITARY—FUEL A, A+** (1100-0400Z†, C814-361-3500; OT 3 hr PN, C814-254-2425. \$70 fee per occurrence.) (NC-100LL)**AIRPORT REMARKS:** Attended 1200-0400Z†. Arpt unattended 0400-1200Z† daily. Deer and birds on and invof arpt. 48 hrs PPR for unscheduled air carriers ops with more than 30 passenger seats, call arpt manager 814-536-0002. Twy B between Rwy 05-23 and Twy B2 rstd to acct with wingspan 78' or less. Ldg fee.**MILITARY REMARKS:** ARNG All fixed wing ramp use PPR ct ARNG 1300-2130Z† weekend C814-532-7600. Fixed wing park first 5 pads facing hangar. Ltd maintenance fixed wing. Ramp PCL twy and park 143.3.**AIRPORT MANAGER:** 814-536-0002**WEATHER DATA SOURCES:** ASOS (814) 535-3511**COMMUNICATIONS:** CTAF 125.75 ATIS 118.325 UNICOM 122.95① **JOHNSTOWN APP/DEP CON** 128.2 121.2 244.875 (1200-0400Z† or ctc 814-532-5960), other times ctc**CLEVELAND CENTER** 124.4 327.1 (0400-1200Z†) or ctc Cleveland ARTCC at 440-774-0234.**TOWER** 125.75 253.5 (1200-0400Z†) **GND CON** 121.6 **CLNC DEL** 126.85**KEYSTONE OPS ARNG** 139.15 241.35 36.5**CLEARANCE DELIVERY PHONE:** For CD ctc Johnstown Apch at 814-532-5960, when Apch clsd ctc Cleveland ARTCC at 440-774-0213.**AIRSPACE:** CLASS D svc 1200-0400Z†; other times CLASS G.**RADIO AIDS TO NAVIGATION:** NOTAM FILE JST.**JOHNSTOWN (L) VORW/DME** 113.0 JST Chan 77 N40°19.00' W78°50.05' at fld. 2279/6W.

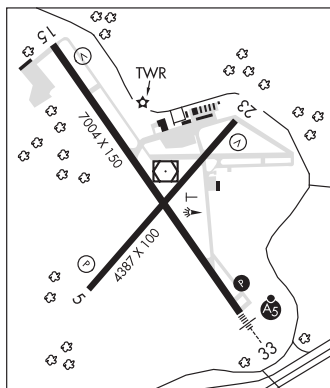
VOR unusable:

035°-047° byd 25 NM blo 11,000'

110°-130°

131°-135° blo 17,000'

255°-324° blo 10,000'

ILS 110.1 I-JST Rwy 33. Class IB. Glideslope unusable byd 5° left of course. Unmonitored when ATCT clsd.**COMM/NAV/WEATHER REMARKS:** UNICOM frequency 122.95 avbl for ground svcs only.**JOSEPH A HARDY CONNELLSVILLE** (See CONNELLSVILLE on page 269)**KAMPEL** (See WELLSVILLE on page 314)