

RICK HUSBAND AMARILLO INTL (AMA)(KAMA) 7 E UTC-6(-5DT) N35°13.16' W101°42.36' **DALLAS-FT WORTH**

3607 B TPA—See Remarks LRA ARFF Index—See Remarks NOTAM FILE AMA H-6G, L-15B

RWY 04-22: H13502X200 (CONC-GRVD) S-100, D-200, 2S-175, IAP, AD

2D-400 PCN 176R/C/W/T HIRL(NSTD)

RWY 04: MALSR. PAPI(P4L)—GA 3.0° TCH 61'. RVR-T

RWY 22: MALSR. PAPI(P4L)—GA 3.0° TCH 77'. RVR-R

RWY 13-31: H7901X150 (CONC-GRVD) S-100, D-200, 2S-175,

2D-400 PCN 89 R/B/W/T HIRL

RWY 13: REIL. PAPI(P4L)—GA 3.0° TCH 52'.

RWY 31: REIL. PAPI(P4L)—GA 3.0° TCH 52'.

RUNWAY DECLARED DISTANCE INFORMATION

RWY 04: TORA-13502 TODA-13502 ASDA-13502 LDA-13502

RWY 13: TORA-7901 TODA-7901 ASDA-7901 LDA-7901

RWY 22: TORA-13502 TODA-13502 ASDA-13502 LDA-13502

RWY 31: TORA-7901 TODA-7901 ASDA-7901 LDA-7901

SERVICE: S4 FUEL 100LL, JET A1+ OX 2, 4 LGT When ATCT clsd, to

incr instst and actvt MALSR rwsy 04 and 22; REIL rwsy 13 and 31;

HIRL rwsy 04-22, 13-31; all twys—CTAF.

AIRPORT REMARKS: Attended continuously. Tiltrotor acct activity invof arpt.

Class I, ARFF Index B. Index C equip avbl upon req. TPA for propeller

acct 4502 (895), turbojet acct 5002 (1395), overhead 5502 (1895).

Rwy 04-22 center 130' grvd full length. RWY 04 RVR AVBL

1200-0600Z± CTC TWR. Rwy 04-22 NSTD HIRL due to spacing. HIRL 50 ft from rwy edge, NSTD dstc fm

cntrln—pavement outside rwy edge stripes may not be full strength and depth perception problems may exist during periods of darkness. Flight Notification Service (ADCUS) available.

AIRPORT MANAGER: 806-335-1671

WEATHER DATA SOURCES: ASOS 118.85 (806) 335-1060.

COMMUNICATIONS: CTAF 118.3 ATIS 118.85 UNICOM 122.95

AMARILLO RCO 122.65 (FORT WORTH RADIO) (0600-1200Z±)

Ⓡ APP/DEP CON 119.5 (1200-0600Z±)

Ⓡ ALBUQUERQUE CENTER APP/DEP CON 127.85 (0600-1200Z±)

TOWER 118.3 (1200-0600Z±) GND CON 121.9 CLNC DEL 121.65

CLEARANCE DELIVERY PHONE: For CD if una to ctc on FSS freq, ctc Albuquerque ARTCC at 505-856-4561.

AIRSPACE: CLASS C svc ctc APP CON svc 1200-0600Z±; other times CLASS E.

RADIO AIDS TO NAVIGATION: NOTAM FILE FTW.

PANHANDLE (H) VORTACW 116.6 PNH Chan 113 N35°14.10' W101°41.94' at fld. 3595/8E.

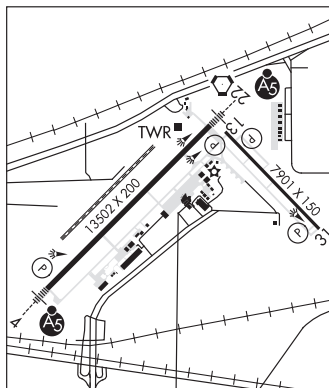
PANDE NDB (LOMW) 251 AM N35°08.79' W101°48.33' 040° 6.6 NM to fld. 3609/8E. NOTAM FILE AMA.

NDB unmonitored when ATCT clsd.

ILS 110.3 I-AMA Rwy 04. Class IB. LOM PANDE NDB. Unmonitored when ATCT clsd.

LDA/DME 111.1 I-RIQ Chan 48 Rwy 22.

ASR (1200-0600Z±)



RIVER FALLS (H81) 9 SE UTC-6(-5DT) N35°04.89' W101°45.35'

DALLAS-FT WORTH

3585 B NOTAM FILE H81

H-6G, L-15B

RWY 17-35: H6015X60 (ASPH) MIRL

RWY 17: Thld dsplcd 151'. Road.

RWY 35: Rgt tfc.

RWY 04-22: 3200X70 (TURF)

RWY 04: Rgt tfc.

RWY 22: Bldg.

SERVICE: S2 FUEL 100LL, JET A1+ LGT ACTVT MIRL Rwy 17-35—CTAF. PCL click PTT slowly no more than once per second. Rwy 17 nonstd dsplcd thr lgts-incor colors.

AIRPORT REMARKS: Unattended. For fuel call 806-340-6790. Rwy 17 dsplcd thr not mkd. Dsplcd thr lgts 416 fm rwy end.

5599 ft avbl ngts. Rwy 35 markings faded.

AIRPORT MANAGER: (806) 670-5836

COMMUNICATIONS: CTAF/UNICOM 122.725

CLEARANCE DELIVERY PHONE: For CD ctc Albuquerque ARTCC at 505-856-4861.

RADIO AIDS TO NAVIGATION: NOTAM FILE FTW.

PANHANDLE (H) VORTACW 116.6 PNH Chan 113 N35°14.10' W101°41.94' 189° 9.6 NM to fld. 3595/8E.