

MYRTLE BEACH INTL (MYR)(KMYR) 3 SW UTC-5(-4DT) N33°40.78' W78°55.70'

CHARLOTTE

25 B Class I, ARFF Index C NOTAM FILE MYR

H-9C, 12G, L-241, 35B

RWY 18-36: H9503X150 (ASPH-GRVD) S-120, D-233, 2D-424,
2D/2D2-943 PCN 69 R/B/W/T HIRL

RWY 18: MALS. PAPI(P4L)—GA 3.0° TCH 64'. RVR-TR P-line. Rgt tfc.

RWY 36: MALS. PAPI(P4L)—GA 3.0° TCH 71'. RVR-TR Trees.

SERVICE: S4 FUEL 100LL, JET A LGT When twr clsd ACTIVATE MALS Rwy 18, MALS Rwy 36; HIRL Rwy 18-36—CTAF.

AIRPORT REMARKS: Attended 1100-0200Z†. Gulls on and invof arpt. No apvl rprd for pushback at trml gates; push is at pilot's discretion; rmn clr of twys. Apron gates A7A, A7B, A7C for pushback apvl PPR twr 120.3. Sightseeing helicopters operating in close proximity of arpt and rwy at or blo 1200. Helicopter routes and holding points remain clear of rwy cntrlns. Helicopters departing/arriving pad located 700' south/southeast apch end Rwy 36. Twy B4 clsd to acft more than 12,500 lbs. U.S. cstmrs user fee arpt. U.S. Cstmrs svc avbl Mon-Fri 1300-2200Z†, other times PPR and fee charged. Ctc MYR ops on CTAF 128.45 prior to ldg 0400-1100Z†.

AIRPORT MANAGER: 843-448-1580

WEATHER DATA SOURCES: AWOS-3PT 123.925 (843) 238-0335. LAWRS.

COMMUNICATIONS: CTAF 128.45 ATIS 123.925 UNICOM 122.95

Ⓡ **APP/DEP CON** 119.2 (322°-170°) 127.4 (171°-321°) (1100-0400Z†)

JAX CENTER APP/DEP CON 134.375 (0400-1100Z†)

TOWER 128.45 (1100-0400Z†) **GND CON/CLNC DEL** 120.3

AIRSPACE: CLASS C svc ctc **APP CON** svc 1100-0400Z† other times CLASS G.

RADIO AIDS TO NAVIGATION: NOTAM FILE CRE.

GRAND STRAND (H) (H) VORTAC 114.4 CRE Chan 91 N33°48.83' W78°43.47' 235° 13.0 NM to fld. 27/3W.

TACAN AZIMUTH unusable:

296°-335°

DME unusable:

296°-335°

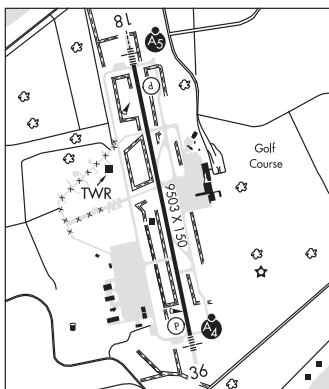
VOR unusable:

296°-308° byd 30NM blo 5,000'

ILS/DME 109.5 I-MYR Chan 32 Rwy 18. Class IIE.

ILS 111.9 I-BSQ Rwy 36. Class IE.

COMM/NAV/WEATHER REMARKS: ATIS freq 123.925 used to transmit AWOS wx data when twr closes.



NEWBERRY CO (EOE)(KEOE) 3 N UTC-5(-4DT) N34°18.56' W81°38.44'

CHARLOTTE

570 B NOTAM FILE AND

L-24J

RWY 04-22: H4001X75 (ASPH-AFSC) S-23, D-30 MIRL
0.9% up NE

RWY 04: PAPI(P2L)—GA 3.15° TCH 42'. Trees.

RWY 22: PAPI(P2L)—GA 3.15° TCH 43'. Tree. Rgt tfc.

SERVICE: S4 FUEL 100LL LGT ACTIVATE PAPI Rwy 04 and Rwy 22 and MIRL Rwy 04-22—CTAF.

AIRPORT REMARKS: Unattended. Fuel self-serve. Deer on invof arpt.

AIRPORT MANAGER: (803) 944-4298

WEATHER DATA SOURCES: AWOS-3 124.275 (803) 276-2419.

COMMUNICATIONS: CTAF/UNICOM 122.8

COLUMBIA APP/DEP CON 133.4

CLEARANCE DELIVERY PHONE: For CD ctc Columbia Apch at 803-822-4511.

RADIO AIDS TO NAVIGATION: NOTAM FILE GRD.

GREENWOOD (H) (H) VORTAC 115.5 GRD Chan 102 N34°15.09' W82°09.25' 083° 25.8 NM to fld. 630/1W.

ENOREE NDB (MHW) 278 EOE N34°18.66' W81°38.18' at fld. 562/7W. NOTAM FILE AND. NDB unmonitored.

