

MONTEREY RGNL (MRY)(KMRY) 3 SE UTC-8(-7DT) N36°35.22' W121°50.57'

SAN FRANCISCO

257 B TPA-1757(1500) AOE LRA Class I, ARFF Index B NOTAM FILE MRY

H-3B, L-3B

RWY 10R-28L: H7175X150 (ASPH-GRVD) S-100, D-160, 2S-175, 2D-300 PCN 43 F/A/X/U HIRL 1.4% up E

IAF, AD

RWY 10R: MALSR. PAPI(P4L)-GA 3.0° TCH 47'. RVR-TR Thld dsplcd 175'.

RWY 28L: REIL. PAPI(P4R)-GA 3.5° TCH 45'. RVR-TR Thld dsplcd 175'. Rgt tfc.

RWY 10L-28R: H3503X60 (ASPH) S-12.5 MIRL 1.7% up E

RWY 10L: REIL. PAPI(P2L)-GA 3.0° TCH 46'.

RWY 28R: REIL. PAPI(P2L)-GA 3.85° TCH 49'. Rgt tfc.

RUNWAY DECLARED DISTANCE INFORMATION

RWY 10R:TORA-7175 TODA-7175 ASDA-7175 LDA-7000

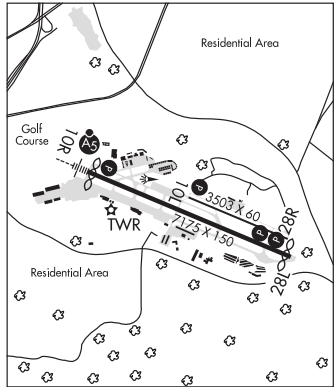
RWY 28L:TORA-7175 TODA-7175 ASDA-7175 LDA-7000

ARRESTING GEAR/SYSTEM

RWY 10R: EMAS

RWY 28L: EMAS

SERVICE: S4 **FUEL** 100LL, JET A **OX 2, 4 LGT** When twr clsd, ACTIVATE MALSR Rwy 10R, REIL Rwy 28L, PAPI Rwy 10L, 10R, Rwy 28L and 28R, HIRL Rwy 10R-28L-CTAF. When twr clsd REIL 10L and Rwy 28R, MIRL Rwy 10L and Rwy 28R unavbl. Rwy 28L VGSJ unusbl byd 2 deg L of rwy cntrln and wi .75 NM of rwy thr.



NOISE: Noise abatement procedures in effect 0700-1500Z. Avoid flying Rwy 28L RNAV Y when possible to reduce noise impacts. Rwy 28L RNAV and RNP apchs are not to be used for practice apchs. Please avoid flights over residential areas, N and S. Ctc arpt ops 831-648-7000 option 2 or www.montereyairport.com for procedures. Rotary wing acct expect to follow fixed wing pattern to rwy ldg. On departure no turns blo 900' unless twr directed.

AIRPORT REMARKS: Attended continuously. Self service fuel avbl 24 hrs with credit card. Svc fuel and repairs between 0600-1400Z by prior arrangement call 831-373-4151 or 831-373-3201. Rwy 10L-28R not avbl for air carrier use. Fire station apron clsd to hel tfc. Rwy 10L-28R not avbl for sked acr opns with more than 9 psgr seats or unsked acr at least 31 psgr seats. Twr non-visibility area Twy A east holding bay. Acft with wingspan greater than 95' may not taxi past the terminal on Twy Alpha when an MD-80 or 757 is parked at terminal. Acft with wingspan greater than 65' prohibited on Twy Bravo between Twy Echo and Twy Delta. Facility constraints for commercial diversions. ADG III and larger with seating capacity more than 150 passengers are highly discouraged. CBP processing facilities unavailable. Overnight tiedown fee at FBO, ldg fee charged for acft over 6,000 lbs and helicopters. Overnight tiedown fee at FBO. Ctc FBO for rates and charges. Ltd transient parking PPR rqrd for large and turbine powered multi-engine acft, 831-648-7000 option 2. User fee arpt.

AIRPORT MANAGER: 831-648-7000

WEATHER DATA SOURCES: ASOS (831) 642-0241

COMMUNICATIONS: CTAF 118.4 ATIS 119.25 831-375-7433 UNICOM 122.95

Ⓡ **NORCAL APP/DEP CON** 133.0 (340°-144°) 127.15 (145°-339°)

TOWER 118.4 (1400-0500Z) **GND CON** 120.875 **CLNC DEL** 135.45

CLEARANCE DELIVERY PHONE: For CD or cnl IFR when ATCT clsd, ctc NorCal app con on 133.5; if una, ctc NorCal Arpt at 916-361-3748.

AIRSPACE: CLASS C svc ctc **APP CON** svc 1400-0500Z; other times CLASS G.

RADIO AIDS TO NAVIGATION: NOTAM FILE SNS.

SALINAS (H) (H) VORTACW 117.3 SNS Chan 120 N36°39.83' W121°36.19' 231° 12.5 NM to fld. 80/17E.

VOR portion unusable:

010°-016° byd 22 NM blo 7,000'

010°-016° byd 26 NM blo 8,000'

016°-080° byd 22 NM blo 8,000'

150°-170° byd 8 NM blo 10,000'

TACAN AZIMUTH & DME unusable:

010°-080° byd 22 NM blo 8,000'

150°-200° blo 11,000'

aerobatic acft wi an area defined as .5 NM rds of SNS 357016.4 (5.3 NM W CVH), blo 3000', avoidance advised sr--s

TACAN AZIMUTH unusable:

245°-255° byd 20 NM

MUNSO NDB (LOMW) 385 MR N36°37.24' W121°56.31' 099° 5.1 NM to fld. 52/15E. NOTAM FILE MRY.

ILS/DME 110.7 I-MRY Chan 44 Rwy 10R. Class IA. LOM MUNSO NDB. ILS/DME unmonitored when ATCT

closed. LOC unusable within 0.5 NM from thld.

LOC/DME 110.7 I-MTB Chan 44 Rwy 28L. LOC/DME unmonitored when ATCT closed. LOC unusable abv 2,000'

MSL, 2 DME inbound to thld. LOC/DME not avbl when ATCT clsd.

ASR/PAR

COMM/NAV/WEATHER REMARKS: ASR-11 antenna located Marina Muni (OAR), remoted to Monterey Rgnl (MRY). ASR-11 serves MRY and OAR.