

LOGAN-CACHE (LGU)(KLGU) 3 NW UTC-7(-6DT) N41°47.51' W111°51.10'

SALT LAKE CITY

4457 B Class IV, ARFF Index A NOTAM FILE LGU

H-3D, L-11D

RWY 17-35: H9010X100 (ASPH) S-24, D-68 PCN 51 F/C/X/U HIRL

IAP, AD

RWY 17: MALSR. PAPI(P2L)—GA 3.0° TCH 40'. Railroad.

RWY 35: REIL. PAPI(P2L)—GA 3.0° TCH 39'.

RWY 10-28: H4075X60 (ASPH) S-12

RWY 28: Railroad.

RUNWAY DECLARED DISTANCE INFORMATION

RWY 10: TORA-4075 TODA-4075

RWY 17: TORA-9010 TODA-9010 ASDA-9010 LDA-9010

RWY 28: TORA-4075 TODA-4075

RWY 35: TORA-9010 TODA-9010 ASDA-9010 LDA-9010

SERVICE: S4 FUEL 100LL, JET A OX1, 2 LGT ACTVT MALSR Rwy 17;

REIL Rwy 35; PAPI Rwy 17 and Rwy 35; HIRL Rwy 17-35—CTAF.

AIRPORT REMARKS: Attended 1500-0200Z±. 100LL avbl H24 with credit card; fuel svc aft hr—435-753-2221/435-752-5955. Birds on and in/ov arpt drg spring/summer. Rwy 10-28 dalgt use only. Flt trng invov arpt. Cold temperature rstd arpt. Alt correction required at or blo -15C.

AIRPORT MANAGER: (435) 752-8111

WEATHER DATA SOURCES: ASOS 135.275 (435) 752-6941.

COMMUNICATIONS: CTAF/UNICOM 122.8

FRANCIS PEAK RCO 122.2. (CEDAR CITY RADIO)

® SALT LAKE CENTER APP/DEP CON 127.7

CLEARANCE DELIVERY PHONE: For CD ctc Salt Lake ARTCC at 801-320-2568.

RADIO AIDS TO NAVIGATION: NOTAM FILE CDC.

BRIGHAM CITY (L) (L) VOR/DME 112.9 LHO Chan 76 N41°47.57' W112°00.59' 076° 7.1 NM to fld. 5370/14E.

VOR portion unusable:

010°-045° byd 20 NM blo 15,000'

045°-070° byd 20 NM blo 16,000'

070°-110° byd 20 NM blo 15,000'

110°-155° byd 15 NM blo 12,000'

155°-215° byd 15 NM blo 15,000'

155°-215° byd 20 NM

305°-320° byd 20 NM blo 15,000'

DME portion unusable:

010°-045° byd 20 NM blo 15,000'

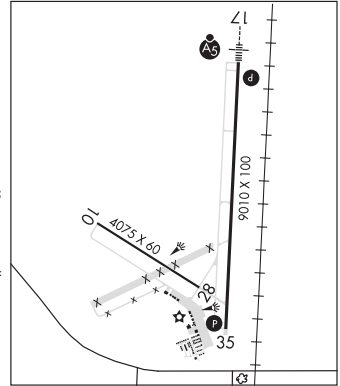
045°-070° byd 20 NM blo 16,000'

070°-125° byd 20 NM blo 15,000'

155°-245° byd 15 NM

245°-320° byd 20 NM blo 15,000'

ILS/DME 109.15 I-LGU Chan 28(Y) Rwy 17. Class IE. LOC unusable byd 12° left of course. ILS is unmonitored.



LUCIN N41°21.78' W113°50.44' NOTAM FILE CDC.

SALT LAKE CITY

(H) (H) VORTAC 113.6 LCU Chan 83 176° 39.6 NM to Wendover. 4400/17E.

H-3D, L-11C

VORTAC unusable:

180°-240° byd 35 NM blo 12,000'

RCO 122.1R 113.6T (CEDAR CITY RADIO)