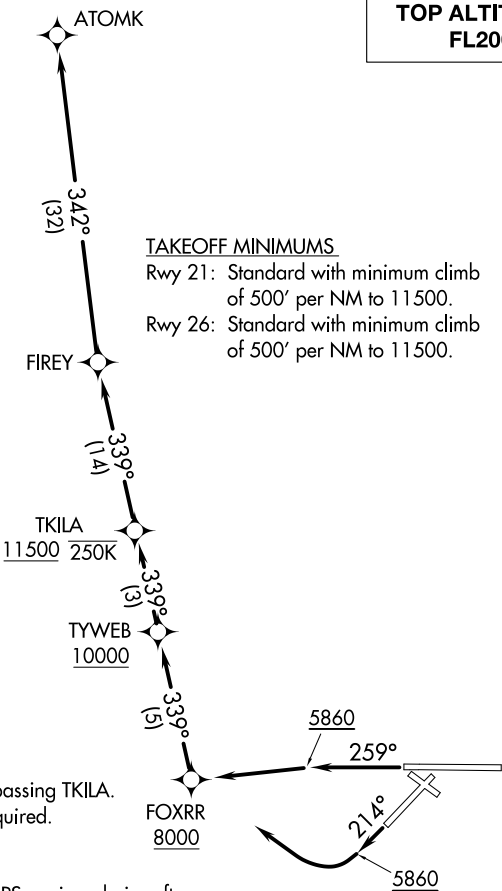


D-ATIS  
118.0 257.7  
CLNC DEL  
119.2 259.3  
CPDLC  
GND CON  
121.9 348.6  
ALBUQUERQUE TOWER  
120.3 351.9  
ALBUQUERQUE DEP CON  
127.4 253.5

TOP ALTITUDE:  
FL200



TAKEOFF MINIMUMS  
Rwy 21: Standard with minimum climb  
of 500' per NM to 11500.  
Rwy 26: Standard with minimum climb  
of 500' per NM to 11500.

- NOTE: Do not exceed 250K until passing TKILA.  
NOTE: DME/DME/IRU or GPS required.  
NOTE: For turbojet aircraft only.  
NOTE: RNAV 1.  
NOTE: RADAR required for non-GPS equipped aircraft.  
NOTE: If unable to accept climb gradient, advise ATC on initial contact.

NOTE: Chart not to scale.

DEPARTURE ROUTE DESCRIPTION

TAKEOFF RUNWAY 21: Climb heading 214° to 5860, then right turn direct FOXRR, cross FOXRR at or above 8000, then on track 339° to TYWEB, cross TYWEB at or above 10000, then on track 339° to TKILA, cross TKILA at or above 11500, then on depicted route to ATOMK, thence. . . .

TAKEOFF RUNWAY 26: Climb heading 259° to 5860, then direct FOXRR, cross FOXRR at or above 8000, then on track 339° to TYWEB, cross TYWEB at or above 10000, then on track 339° to TKILA, cross TKILA at or above 11500, then on depicted route to ATOMK, thence . . . .

. . . . Maintain FL200. Expect filed altitude 10 minutes after departure.

SW-1, 27 JAN 2022 to 24 FEB 2022

SW-1, 27 JAN 2022 to 24 FEB 2022