

AMARILLO, TEXAS

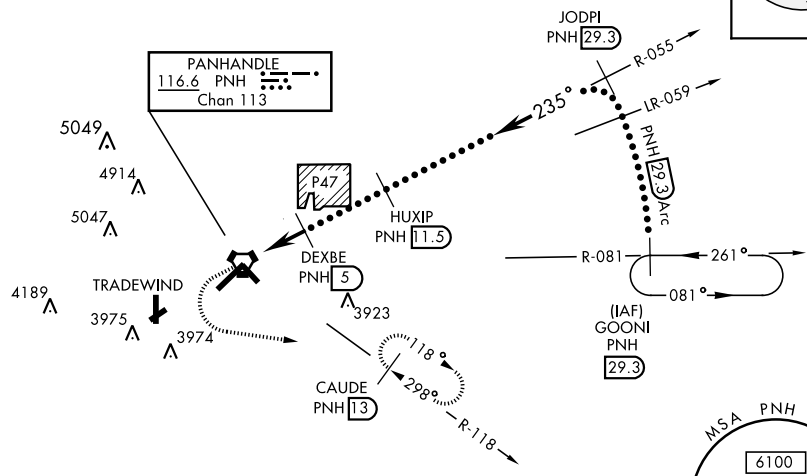
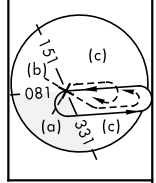
HI-VOR or TACAN RWY 22

VORTAC PNH 116.6 Chan 113	APCH CRS 235°	Rwy ldg 13,502 TDZE 3606 Arprt Elev 3607	AL-19 [USAF]	RICK HUSBAND AMARILLO INTL (KAMA)
---	-------------------------	---	--------------	-----------------------------------

DME required.	MALSR	MISSED APPROACH: Climb to 4100 then climbing left turn to 5000 on heading 090° and PNH VOTRAC R-118 to CAUDE INT/PNH 13 DME and hold.
---------------	-------	---

ATIS 118.85 350.3	AMARILLO APP CON 119.5 307.0	AMARILLO TOWER* 118.3 257.9	GND CON 121.9 348.6	CLNC DEL 121.65 239.275	ASR
-----------------------------	--	---------------------------------------	-------------------------------	-----------------------------------	-----

When local altimeter setting not received, use Borger altimeter setting.

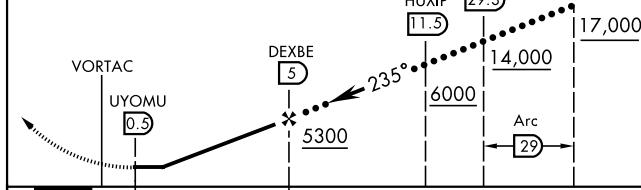


SC-2, 27 JAN 2022 to 24 FEB 2022

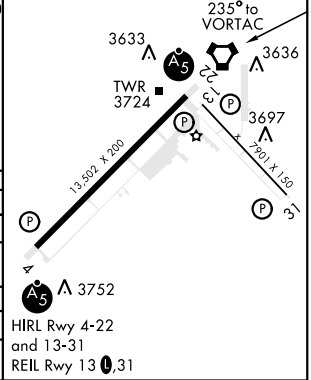
SC-2, 27 JAN 2022 to 24 FEB 2022

EMERG SAFE ALT 100 NM 7500

4100	5000	PNH R-118	VGSI and Descent angles not coincident	JODPI R-055	GOONI R-081
------	------	-----------	--	-------------	-------------



ELEV 3607	TDZE 3606
-----------	-----------



CATEGORY	C	D	E
S-22 *		4000-5/8 394 (400-3/4)	
CIRCLING	4240-13/4 633 (700-13/4)	4280-21/4 673 (700-21/4)	4460-3 853 (900-3)
BORGER ALTIMETER SETTING			
S-22 **		4160-11/8 554 (600-11/8)	
CIRCLING	4400-21/4 793 (800-21/4)	4420-23/4 813 (900-23/4)	4620-3 1013 (1100-3)

AMARILLO, TEXAS 35°13'N-101°42'W RICK HUSBAND AMARILLO INTL (KAMA)

Amdt 1 18JUL19

HI-VOR or TACAN RWY 22