

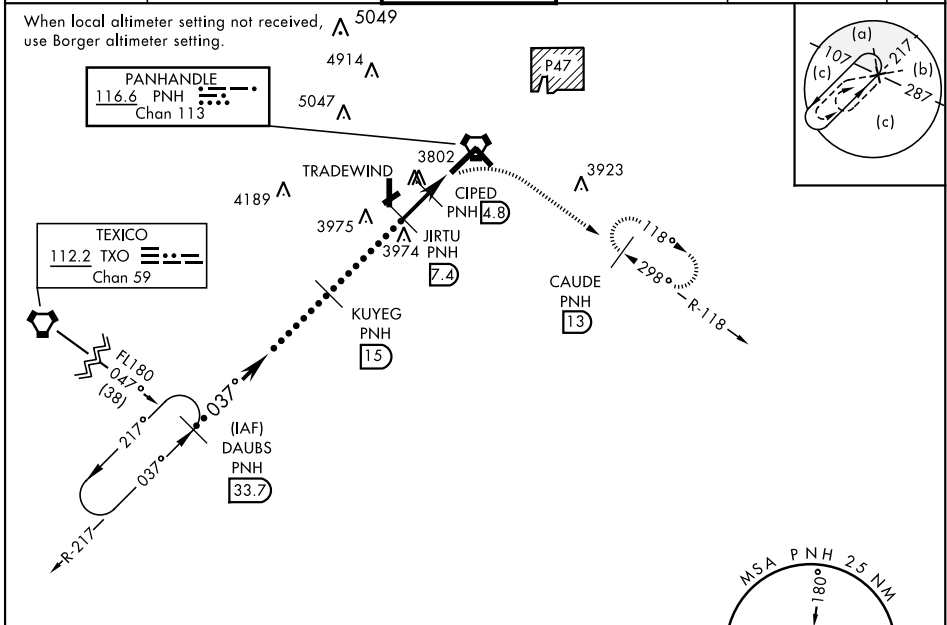
AMARILLO, TEXAS

# HI-VOR or TACAN RWY 4

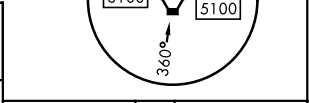
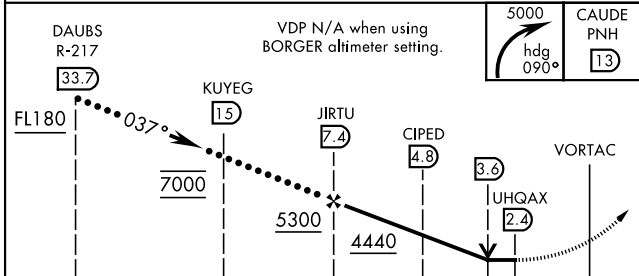
VORTAC PNH <b>116.6</b> Chan <b>113</b>	APCH CRS <b>037°</b>	Rwy Idg <b>13,502</b> TDZE <b>3607</b> Arpt Elev <b>3607</b>	AL-19 [USAF]	RICK HUSBAND AMARILLO INTL (KAMA)
---	-------------------------	--	--------------	-----------------------------------

DME required.	MALSR 	MISSED APPROACH: Climbing right turn to 5000 on heading 090° and PNH VORTAC R-118 to CAUDE/PNH 13 DME and hold.
---------------	-----------	---

ATIS <b>118.85 350.3</b>	AMARILLO APP CON <b>119.5 307.0</b>	AMARILLO TOWER★ <b>118.3 257.9</b>	GND CON <b>121.9 348.6</b>	CLNC DEL <b>121.65 239.275</b>	ASR
-----------------------------	--	---------------------------------------	-------------------------------	-----------------------------------	-----



EMERG SAFE ALT 100 NM 7500



ELEV 3607	TDZE 3607																									
<table border="1"> <thead> <tr> <th>CATEGORY</th> <th>C</th> <th>D</th> <th>E</th> </tr> </thead> <tbody> <tr> <td>S-4 *</td> <td>4040/40 433 (500-3/4)</td> <td>4040/50 433 (500-1)</td> <td></td> </tr> <tr> <td>CIRCLING</td> <td>4240-1 3/4 633 (700-1 3/4)</td> <td>4280-2 1/4 673 (700-2 1/4)</td> <td>4460-3 853 (900-3)</td> </tr> <tr> <td colspan="4">BORGER ALTIMETER SETTING</td> </tr> <tr> <td>S-4 **</td> <td>4200-1 1/4</td> <td>593</td> <td>(600-1 1/4)</td> </tr> <tr> <td>CIRCLING</td> <td>4400-2 1/4 793 (900-2 1/4)</td> <td>4440-2 3/4 833 (900-2 3/4)</td> <td>4620-3 1013 (1100-3)</td> </tr> </tbody> </table>			CATEGORY	C	D	E	S-4 *	4040/40 433 (500-3/4)	4040/50 433 (500-1)		CIRCLING	4240-1 3/4 633 (700-1 3/4)	4280-2 1/4 673 (700-2 1/4)	4460-3 853 (900-3)	BORGER ALTIMETER SETTING				S-4 **	4200-1 1/4	593	(600-1 1/4)	CIRCLING	4400-2 1/4 793 (900-2 1/4)	4440-2 3/4 833 (900-2 3/4)	4620-3 1013 (1100-3)
CATEGORY	C	D	E																							
S-4 *	4040/40 433 (500-3/4)	4040/50 433 (500-1)																								
CIRCLING	4240-1 3/4 633 (700-1 3/4)	4280-2 1/4 673 (700-2 1/4)	4460-3 853 (900-3)																							
BORGER ALTIMETER SETTING																										
S-4 **	4200-1 1/4	593	(600-1 1/4)																							
CIRCLING	4400-2 1/4 793 (900-2 1/4)	4440-2 3/4 833 (900-2 3/4)	4620-3 1013 (1100-3)																							

AMARILLO, TEXAS

35°13'N-101°42'W

RICK HUSBAND AMARILLO INTL (KAMA)

Amdt 1A 05DEC19

# HI-VOR or TACAN RWY 4

SC-2, 27 JAN 2022 to 24 FEB 2022

SC-2, 27 JAN 2022 to 24 FEB 2022