

LOC I-RIQ <b>111.1</b> Chan <b>48</b>	APP CRS <b>214°</b>	Rwy Idg <b>13502</b> TDZE <b>3606</b> Apt Elev <b>3607</b>
---	------------------------	--

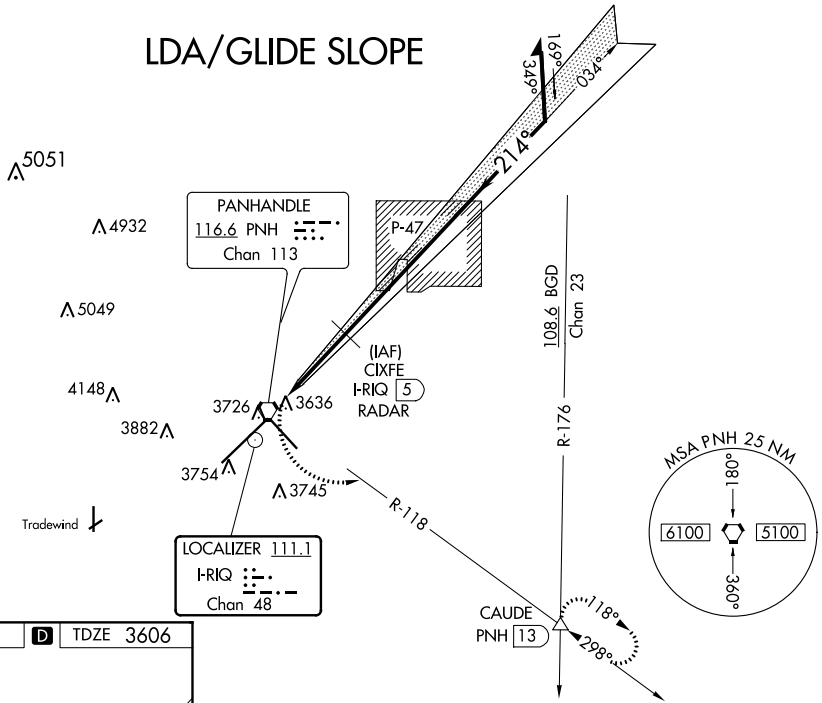
# LDA/DME RWY 22

RICK HUSBAND AMARILLO INTL (AMA)

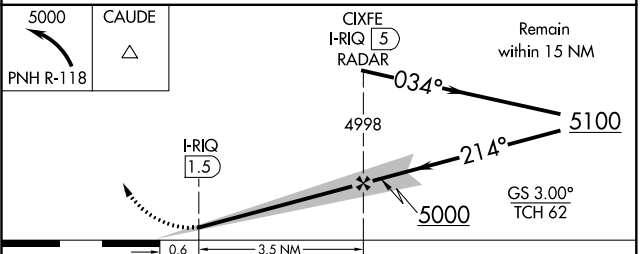
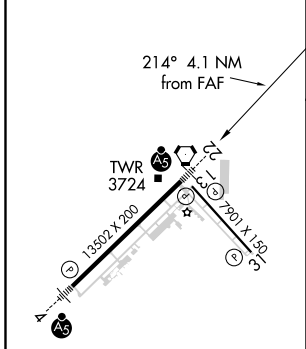
RADAR required for procedure entry.		MALS R	MISSED APPROACH: Climbing left turn to 5000 via PNH VORTAC R-118 to CAUDE INT and hold.	
<p>Final approach course offset 4.45 degrees intersects the runway centerline 2509' from Rwy 22. For Inop ALS, increase LDA/GS-22 all Cats visibility to ¼ SM, ASR increase LDA-22 Cat C/D/E visibility to ⅓ SM.</p>				

ATIS <b>118.85 350.3</b>	AMARILLO APP CON* <b>119.5 307.0</b>	AMARILLO TOWER* <b>118.3(CTAF) 257.9</b>	GND CON <b>121.9 348.6</b>	CLNC DEL <b>121.65 239.275</b>	UNICOM <b>122.95</b>
-----------------------------	---	---	-------------------------------	-----------------------------------	-------------------------

## LDA/GLIDE SLOPE



ELEV 3607	<b>D</b>	TDZE 3606
-----------	----------	-----------



CATEGORY	A	B	C	D	E
LDA/GS-22	3856-½ 250 (300-½)				
LDA-22	3900-½	294 (300-½)		3900-¾	294 (300-¾)
<b>C</b> CIRCLING	4080-1	473 (500-1)	4240-1¾ 633 (700-1¾)	4280-2¼ 673 (700-2¼)	4460-3 853 (900-3)

REIL Rwy 13 and 31  
HIRL Rwys 4-22 and 13-31

SC-2, 27 JAN 2022 to 24 FEB 2022

SC-2, 27 JAN 2022 to 24 FEB 2022