

APP CRS <b>218°</b>	Rwy Idg TDZE Apt Elev	<b>13502</b> <b>3606</b> <b>3607</b>
------------------------	-----------------------------	--

# RNAV (RNP) Z RWY 22

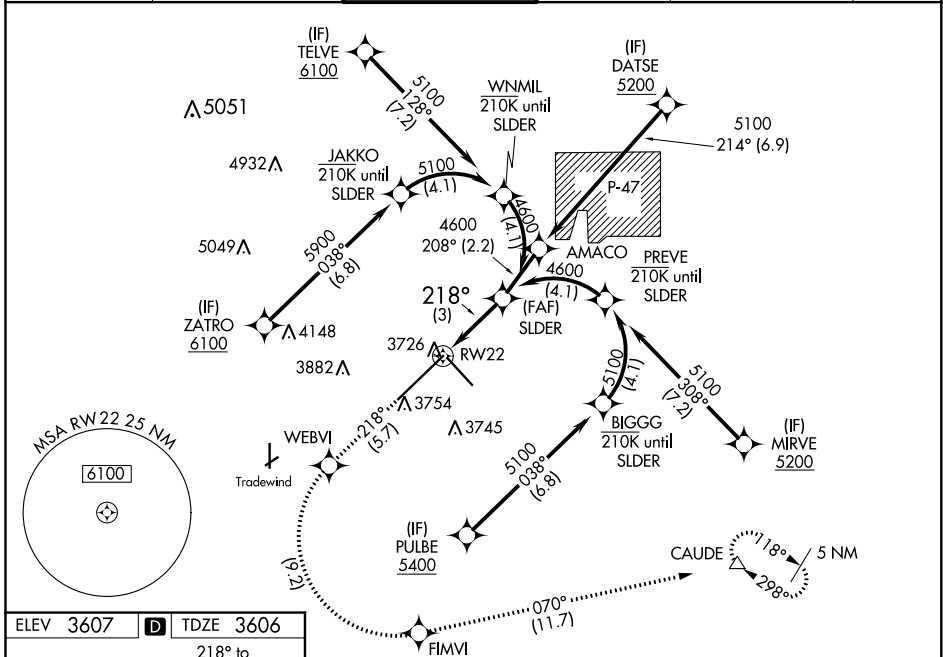
RICK HUSBAND AMARILLO INTL (AMA)

**ASR** For uncompensated Baro-VNAV systems, procedure NA below -1.4°C (7°F) or above 52°C (125°F). RF required. GPS required. For inop ALS, increase RNP 0.14 all Cats visibility to ¾ SM and increase RNP 0.30 all Cats visibility to 1½ SM.



**MISSED APPROACH:** (Do not exceed 185 K until FIMVI) Climb to 5400 on track 218° to WEBVI, left turn to FIMVI, then track 070° to CAUDE and hold.

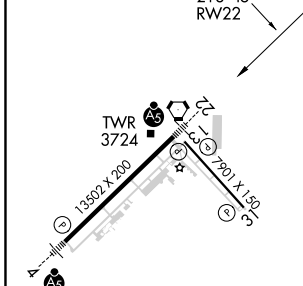
ATIS <b>118.85 350.3</b>	AMARILLO APP CON* <b>119.5 307.0</b>	AMARILLO TOWER* <b>118.3(CTAF) 257.9</b>	GND CON <b>121.9 348.6</b>	CLNC DEL <b>121.65 239.275</b>	UNICOM <b>122.95</b>
-----------------------------	---	---	-------------------------------	-----------------------------------	-------------------------



SC-2, 27 JAN 2022 to 24 FEB 2022

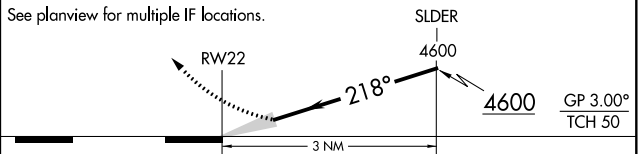
SC-2, 27 JAN 2022 to 24 FEB 2022

ELEV 3607	<b>D</b>	TDZE 3606
-----------	----------	-----------



## RNAV 1 - GPS or RADAR REQUIRED

VGSI and RNAV glidepath not coincident (VGSI Angle 3.00/TCH 77).	5400	WEBVI	FIMVI	CAUDE
	↑ tr 218°	✧	✧ tr 070°	△



CATEGORY	A	B	C	D
RNP 0.14 DA		3884-½	278 (300-½)	
RNP 0.30 DA		3958-¾	352 (400-¾)	

## AUTHORIZATION REQUIRED

REIL Rwy 13 and 31  
HIRL Rwys 4-22 and 13-31

AMARILLO, TEXAS  
Amdt 1 12OCT17

35°13'N-101°42'W

RICK HUSBAND AMARILLO INTL (AMA)  
**RNAV (RNP) Z RWY 22**