

APP CRS	Rwy Idg	<b>7901</b>
<b>309°</b>	TDZE	<b>3601</b>
	Apt Elev	<b>3607</b>

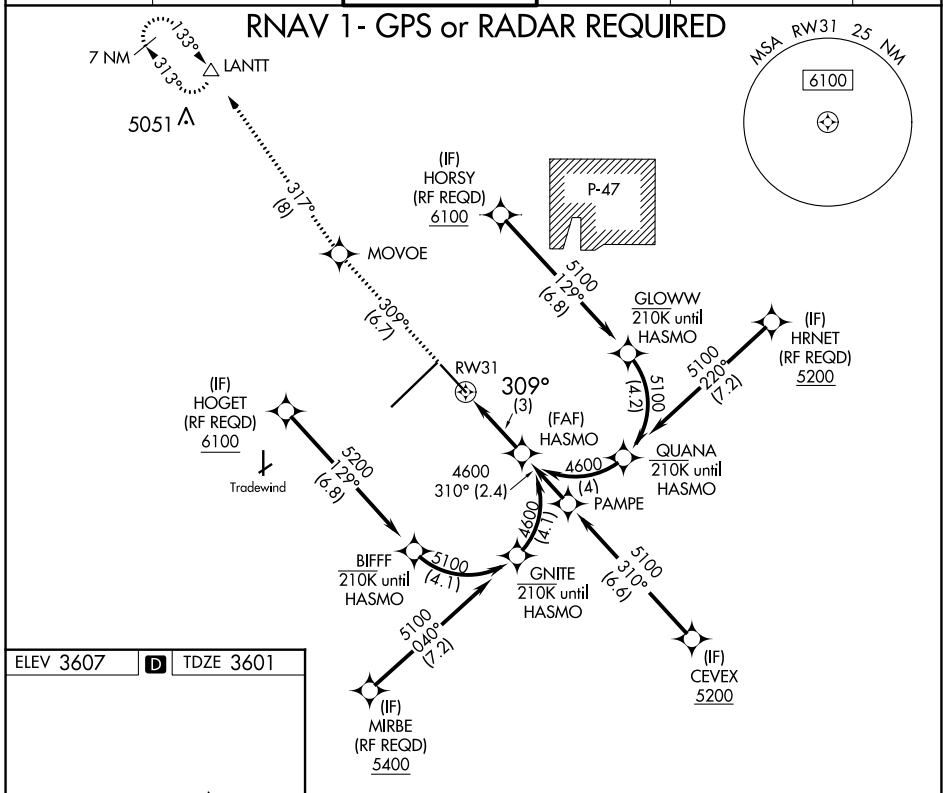
# RNAV (RNP) Z RWY 31

RICK HUSBAND AMARILLO INTL (A.M.A)

**ASR** For uncompensated Baro-VNAV systems, procedure NA below -14°C (7°F) or above 51°C (124°F). GPS required.

**MISSED APPROACH:** Climb to 6200 on track 309° to MOVOE and track 317° to LANTT and hold.

ATIS	AMARILLO APP CON*	AMARILLO TOWER*	GND CON	CLNC DEL	UNICOM
<b>118.85 350.3</b>	<b>119.5 307.0</b>	<b>118.3(CTAF) 257.9</b>	<b>121.9 348.6</b>	<b>121.65 239.275</b>	<b>122.95</b>



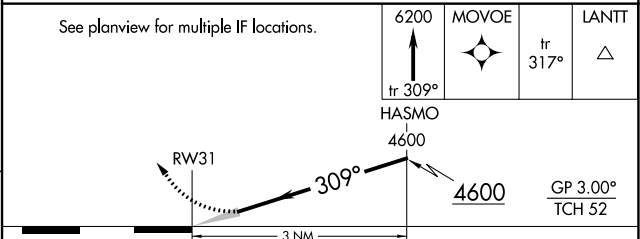
ELEV 3607	<b>D</b>	TDZE 3601
-----------	----------	-----------

TWR 3724

13502 X 200

7901 X 130

309° to RW31



CATEGORY	A	B	C	D
RNP 0.30 DA		3930-1 1/8	329 (400-1 1/8)	

**AUTHORIZATION REQUIRED**

SC-2, 27 JAN 2022 to 24 FEB 2022

SC-2, 27 JAN 2022 to 24 FEB 2022