

WAAS CH <b>82319</b> <b>W31A</b>	APP CRS <b>310°</b>	Rwy Idg TDZE Apt Elev	<b>7901</b> <b>3601</b> <b>3607</b>
--	------------------------	-----------------------------	---

# RNAV (GPS) Y RWY 31

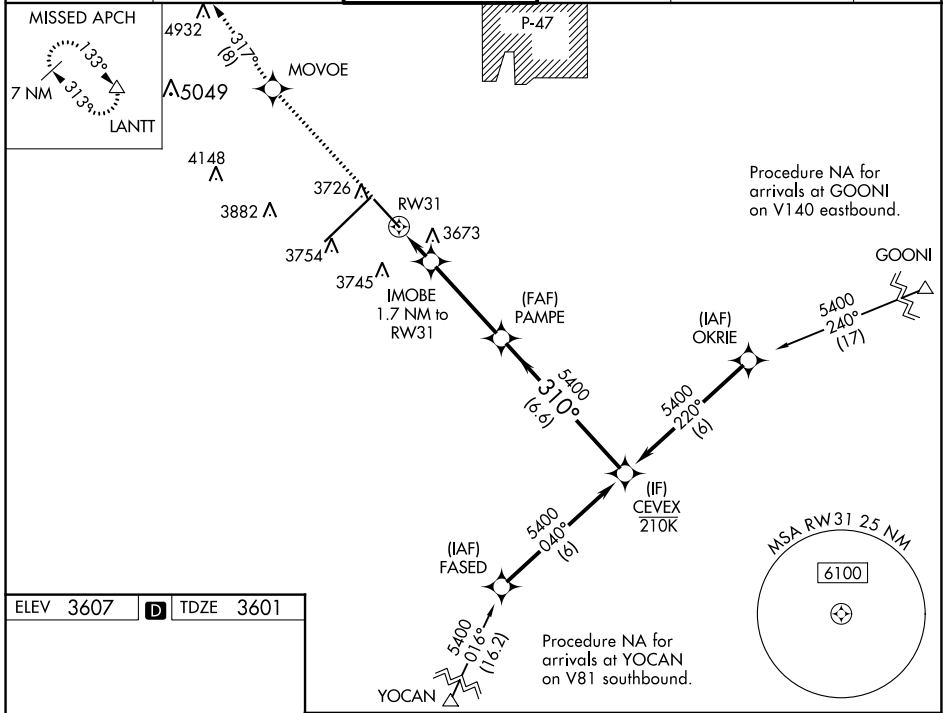
RICK HUSBAND AMARILLO INTL (A.M.A)

**⚠** DME/DME RNP-0.3 NA. For uncompensated Baro-VNAV systems, LNAV/VNAV NA below -14°C (7°F) or above 46°C (116°F). When local altimeter setting not received, use Borger altimeter setting: increase DA to 4004 and all visibilities 5/8 mile; increase all MDA 160 feet and visibility Cat C and D 1/2 mile. Baro-VNAV and VDP NA when using Borger altimeter setting.

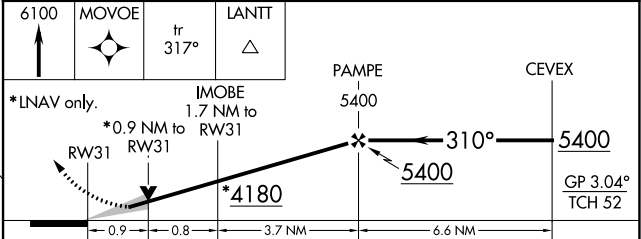
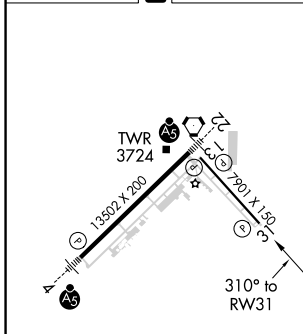
**ASR**

**MISSED APPROACH:** Climb to 6100 direct MOVOE and on track 317° to LANIT and hold.

ATIS <b>118.85 350.3</b>	AMARILLO APP CON* <b>119.5 307.0</b>	AMARILLO TOWER* <b>118.3 (CTAF) 257.9</b>	GND CON <b>121.9 348.6</b>	CLNC DEL <b>121.65 239.275</b>	UNICOM <b>122.95</b>
-----------------------------	---	--	-------------------------------	-----------------------------------	-------------------------



ELEV 3607	<b>D</b>	TDZE 3601
-----------	----------	-----------



CATEGORY	A	B	C	D
LPV DA		3851-3/4	250 (300-3/4)	
LNAV/VNAV DA		3851-3/4	250 (300-3/4)	
LNAV MDA		3940-1	339 (400-1)	
<b>C</b> CIRCLING	4080-1	473 (500-1)	4240-1 3/4 633 (700-1 1/4)	4280-2 1/4 673 (700-2 1/4)

SC-2, 27 JAN 2022 to 24 FEB 2022

SC-2, 27 JAN 2022 to 24 FEB 2022