

WAAS CH <b>82718</b> <b>W04A</b>	APP CRS <b>038°</b>	Rwy Idg <b>13502</b> TDZE <b>3607</b> Apt Elev <b>3607</b>
--	------------------------	--

# RNAV (GPS) Y RWY 4

RICK HUSBAND AMARILLO INTL (A.M.A)

RNP APCH.

**ASR**

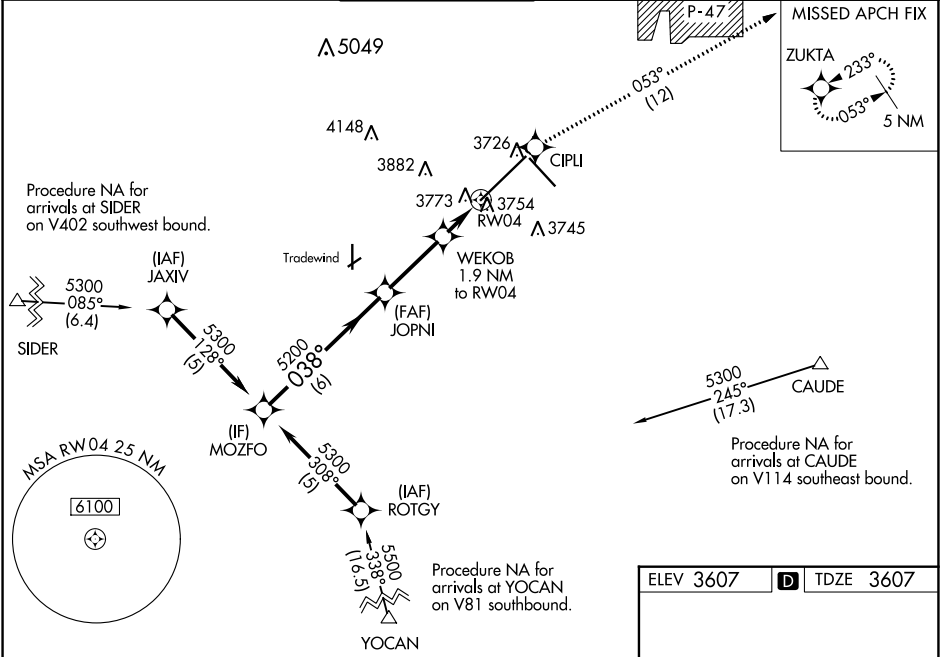
For uncompensated Baro-VNAV systems, LNAV/VNAV NA below -22°C or above 41°C. For inop ALS, increase LPV Cat E visibility to RVR 4000, and LNAV/VNAV and LNAV Cat E to 1¼ SM.  
 \*\*RVR 1800 authorized with use of FD or AP or HUD to DA.

MALSR



MISSED APPROACH: Climb to 5400 direct CIPLI and on track 053° to ZUKTA and hold.

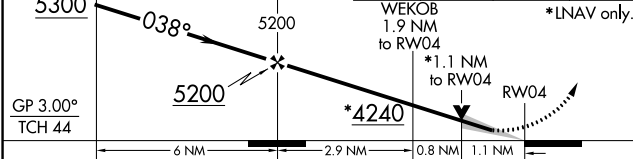
ATIS <b>118.85 350.3</b>	AMARILLO APP CON* <b>119.5 307.0</b>	AMARILLO TOWER* <b>118.3(CTAF) 257.9</b>	GND CON <b>121.9 348.6</b>	CLNC DEL <b>121.65 239.275</b>	UNICOM <b>122.95</b>
-----------------------------	---	---	-------------------------------	-----------------------------------	-------------------------



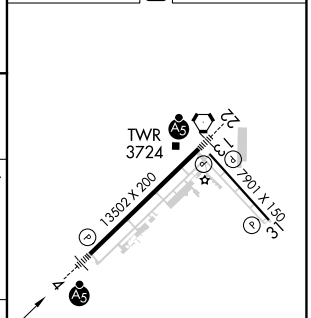
VGSI and RNAV glidepath not coincident (VGSI Angle 3.00/TCH 61). MOZFO

5400	CIPLI	Tr 053°	ZUKTA
------	-------	---------	-------

\*LNAV only.



ELEV 3607	TDZE 3607
-----------	-----------



CATEGORY	A	B	C	D	E
LPV DA **		3807/24	200 (200-½)		
LNAV/VNAV DA		4028/50	421 (500-1)		
LNAV MDA	4040/24	433 (500-½)	4040/40 433 (500-¾)	4040/50	433 (500-1)
CIRCLING	4080-1	473 (500-1)	4240-1¾ 633 (700-1¾)	4280-2¼ 673 (700-2¼)	4460-3 853 (900-3)

REIL Rwy 13 and 31

HIRL Rwy 4-22 and 13-31

SC-2, 27 JAN 2022 to 24 FEB 2022

SC-2, 27 JAN 2022 to 24 FEB 2022