

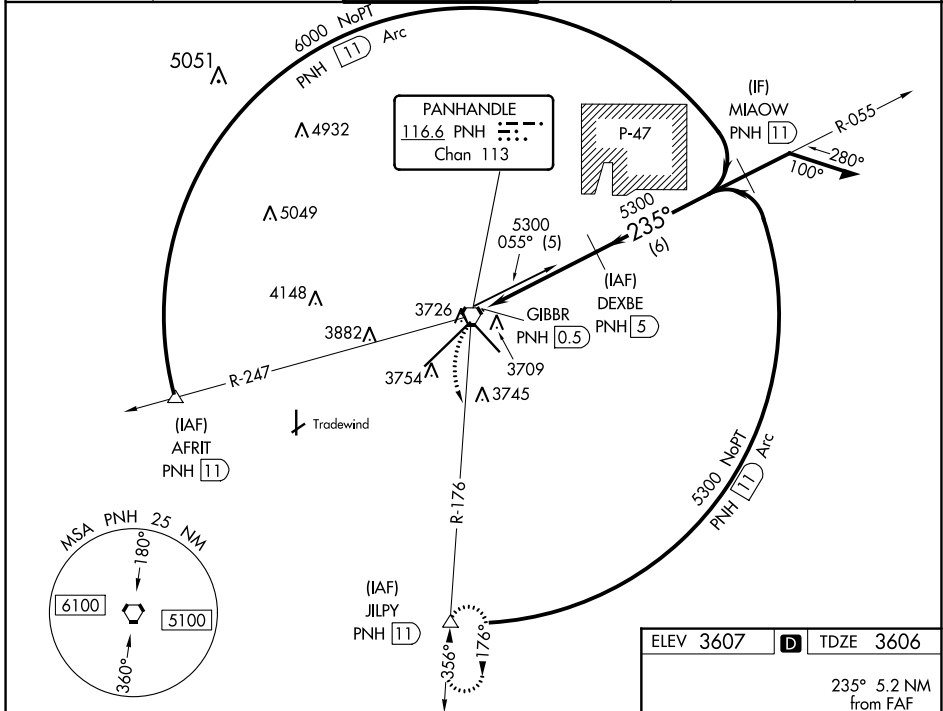
VORTAC PNH <b>116.6</b> Chan <b>113</b>	APP CRS <b>235°</b>	Rwy Idg TDZE Apt Elev <b>13502</b> <b>3606</b> <b>3607</b>
---	------------------------	---

# VOR RWY 22

RICK HUSBAND AMARILLO INTL (AMA)

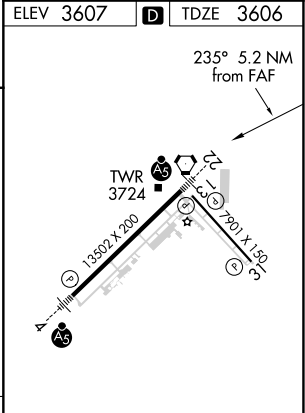
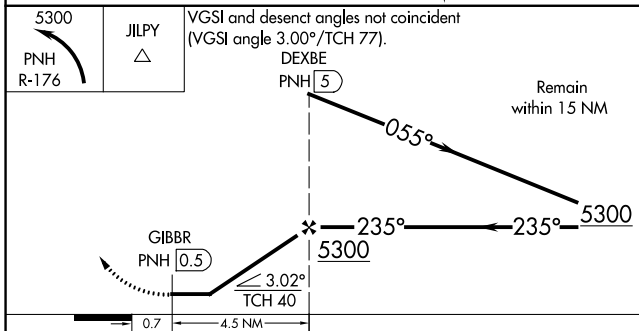
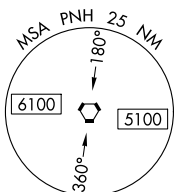
DME required.		MALSR	MISSED APPROACH: Climbing left turn to 5300 on PNH R-176 to JILPY/11 DME and hold.		
For inop ALS, increase Cat C visibility to 1 SM. ASR					

ATIS <b>118.85 350.3</b>	AMARILLO APP CON* <b>119.5 307.0</b>	AMARILLO TOWER* <b>118.3</b> (CTAF) <b>257.9</b>	GND CON <b>121.9 348.6</b>	CLNC DEL <b>121.65 239.275</b>	UNICOM <b>122.95</b>
-----------------------------	---	---	-------------------------------	-----------------------------------	-------------------------



SC-2, 27 JAN 2022 to 24 FEB 2022

SC-2, 27 JAN 2022 to 24 FEB 2022



CATEGORY	A	B	C	D	E
S-22	3960-1/2 354 (400-1/2)	3960-3/4 354 (400-3/4)	3960-1 354 (400-1)		
<b>C</b> CIRCLING	4080-1 473 (500-1)	4240-1 3/4 633 (700-1 3/4)	4280-2 1/4 673 (700-2 1/4)	4460-3 853 (900-3)	

REIL Rwy 13 and 31   
 HIRL Rws 4-22 and 13-31