


LOC I-AIW <b>108.9</b>	APP CRS <b>309°</b>	Rwy Idg <b>9002</b>
		TDZE <b>733</b>
		Apt Elev <b>777</b>

# ILS or LOC RWY 31

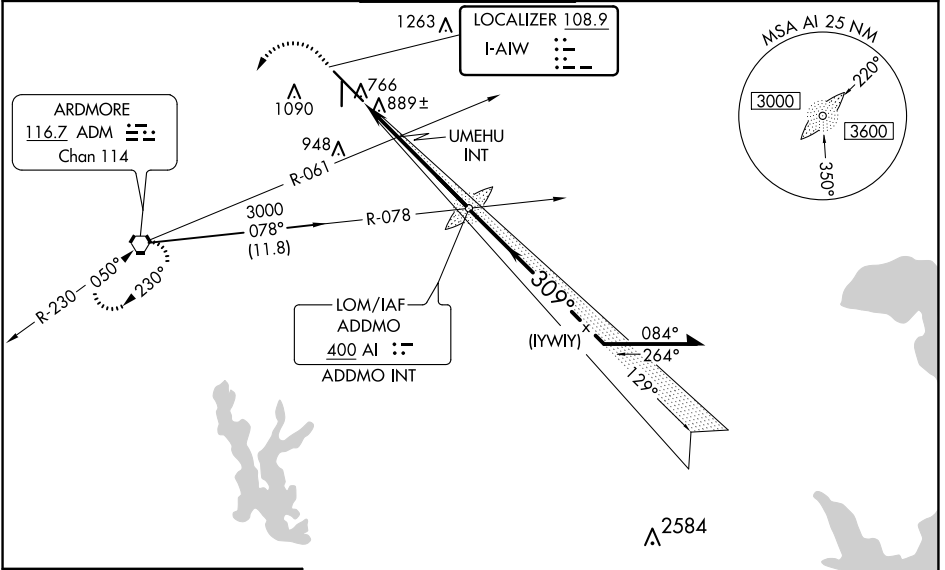
ARDMORE MUNI (ADM)

⚠ Autopilot coupled approach NA below 1360. When local altimeter setting not received, use Ardmore Downtown Exec altimeter setting: increase DA to 1026 feet and all MDAs 40 feet.  
 ⚠ Inop table does not apply to S-ILS 31 all Cats, S-LOC 31 Cats A and B; UMEHU FIX MINIMUMS S-LOC 31 Cats A and B. When using Ardmore Downtown Exec altimeter setting, inop table does not apply to S-ILS 31 all Cats, S-LOC 31 Cats A and B; UMEHU FIX MINIMUMS S-LOC 31 Cats A and B. For inop ALS, increase UMEHU FIX MINIMUMS S-LOC 31 Cats C and D visibility to 1½ SM. When using Ardmore Downtown Exec altimeter setting, for inop ALS, increase UMEHU FIX MINIMUMS Cats C and D visibility to 1¾ SM. Circling Rwy 13, 35 NA at night. Rwy 13, 35 helicopter visibility reduction below 1 SM NA. Rwy 31 helicopter visibility reduction below ¾ SM NA.

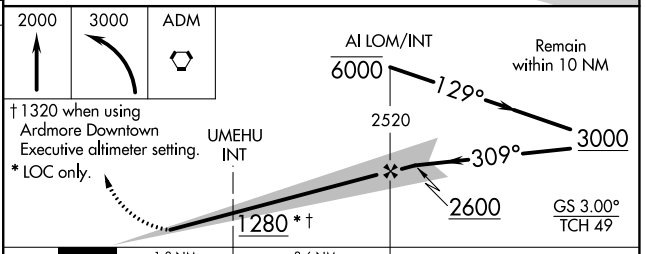
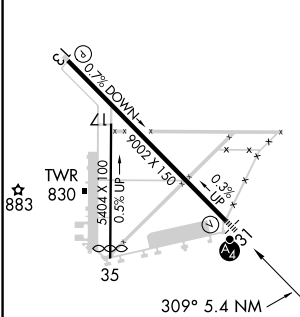
MALS 

MISSED APPROACH:  
Climb to 2000 then climbing left turn to 3000 direct ADM VORTAC and hold.

ATIS <b>125.6</b>	FORT WORTH CENTER <b>124.75 323.0</b>	ARDMORE TOWER ★ <b>118.5 (CTAF) 257.7</b>	GND CON <b>121.8</b>	UNICOM <b>122.95</b>
----------------------	--	--	-------------------------	-------------------------



ELEV 777	<b>D</b>	TDZE 733
----------	----------	----------



CATEGORY	A	B	C	D
S-ILS 31	991-1 258 (300-1)			
S-LOC 31	1280-1	547 (600-1)	1280-1½	547 (600-1½)
CIRCLING	1380-1 603 (700-1)	1440-1 663 (700-1)	1460-2 683 (700-2)	1700-3 923 (1000-3)
UMEHU FIX MINIMUMS (DUAL VOR RECEIVERS REQUIRED)				
S-LOC 31	1140-1 407 (400-1)			
CIRCLING	1380-1 603 (700-1)	1440-1 663 (700-1)	1460-2 683 (700-2)	1700-3 923 (1000-3)

FAF to MAP 5.4 NM					
Knots	60	90	120	150	180
Min:Sec	5:24	3:36	2:42	2:10	1:48

SC-1, 27 JAN 2022 to 24 FEB 2022

SC-1, 27 JAN 2022 to 24 FEB 2022