

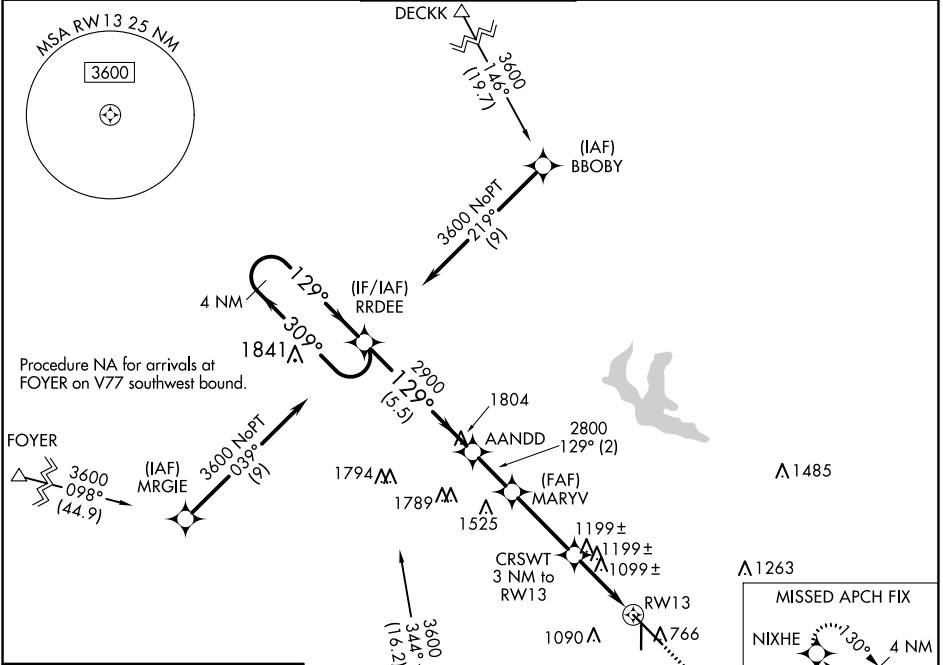
WAAS CH <b>53725</b> <b>W13A</b>	APP CRS <b>129°</b>	Rwy Idg TDZE Apt Elev	<b>9002</b> <b>777</b> <b>777</b>
--	------------------------	-----------------------------	---

# RNAV (GPS) RWY 13

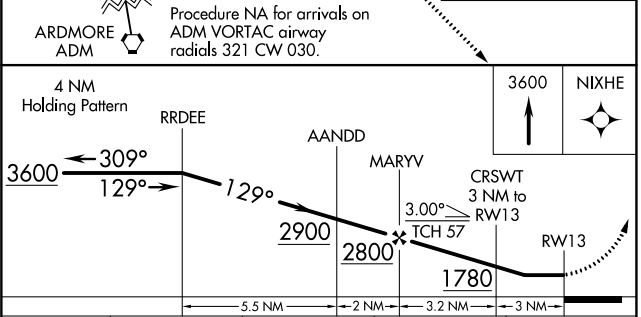
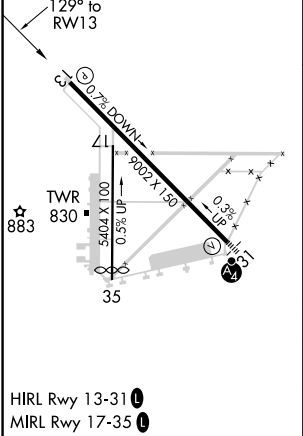
ARDMORE MUNI (ADM)

RNP APCH.		MISSED APPROACH: Climb to 3600 direct NIXHE and hold.	
<p><b>⚠</b> Rwy 13 helicopter visibility reduction below 1 SM NA. When local altimeter setting not received, use Ardmore Downtown Exec altimeter setting and increase all MDA 40 feet. Procedure NA at night.</p>			

ATIS <b>125.6</b>	FORT WORTH CENTER <b>124.75 323.0</b>	<b>ARDMORE TOWER ★</b> <b>118.5 (CTAF) 0 257.7</b>	GND CON <b>121.8</b>	UNICOM <b>122.95</b>
----------------------	--	---	-------------------------	-------------------------



ELEV 777	<b>D</b>	TDZE 777
----------	----------	----------



CATEGORY	A	B	C	D
LP MDA	1360-1	583 (600-1)	1360-1 $\frac{3}{4}$	583 (600-1 $\frac{3}{4}$ )
LNAV MDA	1460-1	683 (700-1)	1460-2	683 (700-2)

SC-1, 27 JAN 2022 to 24 FEB 2022

SC-1, 27 JAN 2022 to 24 FEB 2022