


WAAS CH <b>69625</b> <b>W31A</b>	APP CRS <b>309°</b>	Rwy Idg TDZE Apt Elev	<b>9002</b> <b>733</b> <b>777</b>
--	------------------------	-----------------------------	---

# RNAV (GPS) RWY 31

ARDMORE MUNI (ADM)

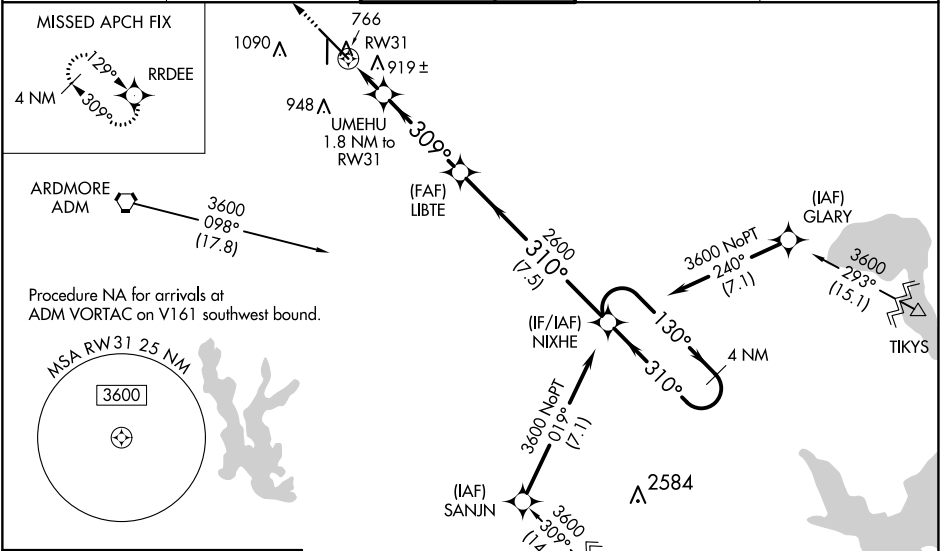
RNP APCH.

▼ For uncompensated Baro-VNAV systems, LNAV/VNAV NA below -16°C or above 54°C .When local altimeter setting not received, use Ardmore Downtown Exec altimeter setting: increase LPV DA to 1026 feet; increase LNAV/VNAV DA to 1276 feet and all visibilities ¾ SM; increase all MDAs 40 feet. Inop table does not apply to LPV, all Cats and LNAV Cats A and B. When using Ardmore Downtown Exec altimeter setting, inop table does not apply to LPV all Cats and LNAV Cats A and B. For inop ALS, increase LNAV Cats C and D visibility to 1¾ SM. For inop ALS, when using Ardmore Downtown Exec altimeter setting, increase LNAV Cats C and D to 1¾ SM. VDP NA when using Ardmore Downtown Exec altimeter setting. Rwy 31 helicopter visibility reduction below ¾ SM NA. Rwy 13, 35 helicopter visibility reduction below 1 SM NA. Circling Rwy 13, 35 NA at night.

MALS 

MISSED APPROACH: Climb to 3600 direct RRDEE and hold.

ATIS <b>125.6</b>	FORT WORTH CENTER <b>124.75 323.0</b>	ARDMORE TOWER* <b>118.5 (CTAF) 0 257.7</b>	GND CON <b>121.8</b>	UNICOM <b>122.95</b>
----------------------	--	---	-------------------------	-------------------------



ELEV 777	<b>D</b>	TDZE 733
----------	----------	----------

3600 RRDEE

\*LNAV only.

UMEHU 1.8 NM to RW31

LIBTE 2600

NIXHE 4 NM Holding Pattern

3600

130°

310°

310°

3600 GP 3.00° TCH 49

1340\*

2600

1.3 NM 0.5 3.9 NM 7.5 NM

CATEGORY	A	B	C	D
LPV DA		991-1	258 (300-1)	
LNAV/VNAV DA		1241-1¼	508 (500-1¼)	
LNAV MDA		1180-1	447 (500-1)	
CIRCLING	1380-1 603 (700-1)	1440-1 663 (700-1)	1460-2 683 (700-2)	1700-3 923 (1000-3)

HIRL Rwy 13-31

MIRL Rwy 17-35

SC-1, 27 JAN 2022 to 24 FEB 2022

SC-1, 27 JAN 2022 to 24 FEB 2022