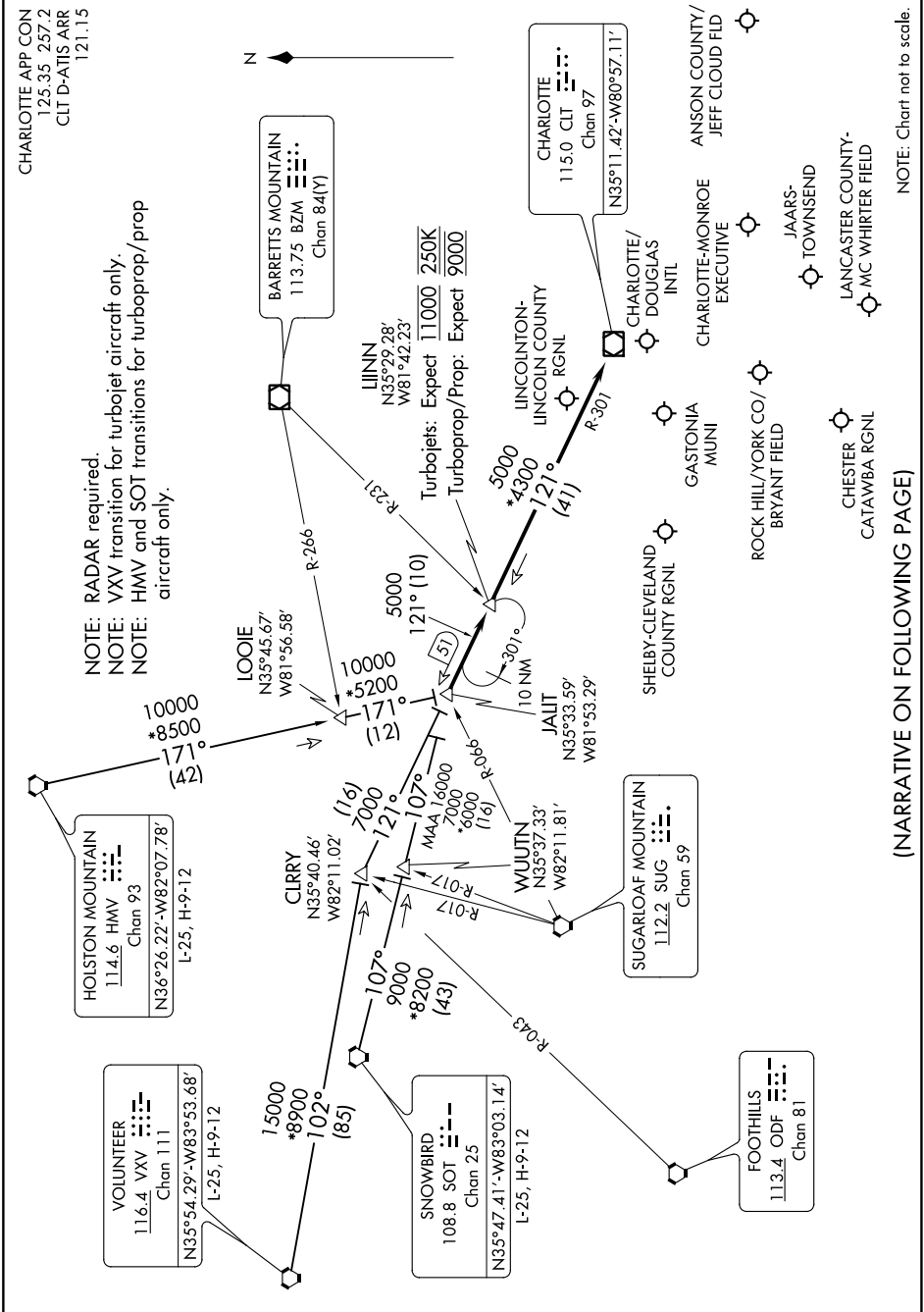


CHARLOTTE APP CON
125.35 257.2
CLT D-ATIS ARR
121.15

NOTE: RADAR required.
NOTE: VVX transition for turboprop aircraft only.
NOTE: HMV and SOT transitions for turboprop/prop aircraft only.

SE-2, 27 JAN 2022 to 24 FEB 2022



NOTE: Chart not to scale.

(NARRATIVE ON FOLLOWING PAGE)

SE-2, 27 JAN 2022 to 24 FEB 2022