

DULUTH, MINNESOTA

HI-TACAN RWY 9

TACAN LKI Chan 11	APCH CRS 087°	Rwy ldg 10,062 THRE 1428 Arprt Elev 1428
-------------------	---------------	--

AL-125 [USAF]

DULUTH INTL (KDLH)

RADAR required.

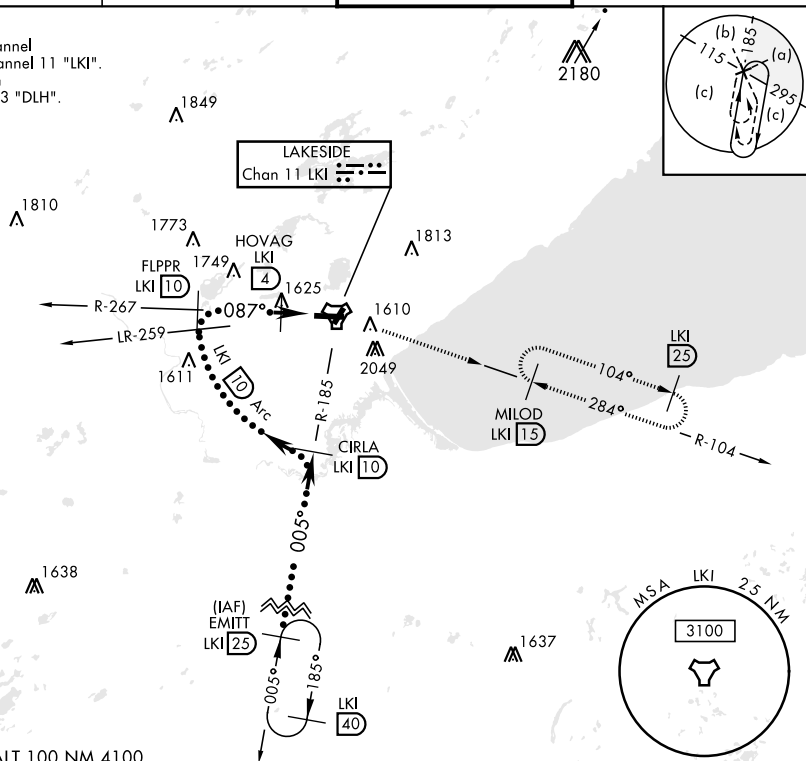
▼ *When ALS inop, increase CAT E vis to 1 3/8 miles.
**Circling NA for CAT E SE of Rwy 3 and 27.



MISSED APPROACH: Climb to 2500 then climbing right turn to 4000 via LKI TACAN R-104 to MILOD (1.5 DME) and hold.

ATIS 124.1 270.1	APP CON 125.45 233.7	TOWER 118.3 257.8	GND CON 121.9 348.6
------------------	----------------------	-------------------	---------------------

CAUTION:
Do not select channel 73 "DLH" for channel 11 "LKI".
Towers 2049" on R-099 channel 73 "DLH".

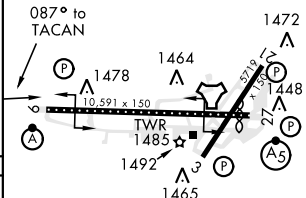


NC-1, 27 JAN 2022 to 24 FEB 2022

NC-1, 27 JAN 2022 to 24 FEB 2022

EMERG SAFE ALT 100 NM 4100

	2500	4000	MILOD LKI 15	ELEV 1428	THRE 1428	
		LKI R-104		Rwy 9 ldg 10,062'	Rwy 27 ldg 10,062'	
	EMITT 25	CIRLA 10	FLPPR 10	HOVAG 4	IWYYES 2	TACAN
	FL180	005°	4000	4000	087°	2300
	3.00° TCH 50	Arc 10				
CATEGORY	C	D	E			
S-9 *	1880/45	452	(500-1)			
CIRCLING **	1920-1 1/2 492 (500-1 1/2)	1980-2 552 (600-2)	2060-2 1/4 632 (700-2 1/4)			
				TDZL/CL Rwy 9-27	REIL Rwy 3 and 21	
				HIRL Rwy 3-21 and 9-27		



DULUTH, MINNESOTA

46°51'N-92°12'W

DULUTH INTL (KDLH)

Amdt 3

HI-TACAN RWY 9