

LOC I-DLH <b>110.3</b>	APP CRS <b>093°</b>	Rwy Idg <b>10062</b> TDZE <b>1428</b> Apt Elev <b>1428</b>
---------------------------	------------------------	--

# ILS RWY 9 (CAT II)

DULUTH INTL (DLH)

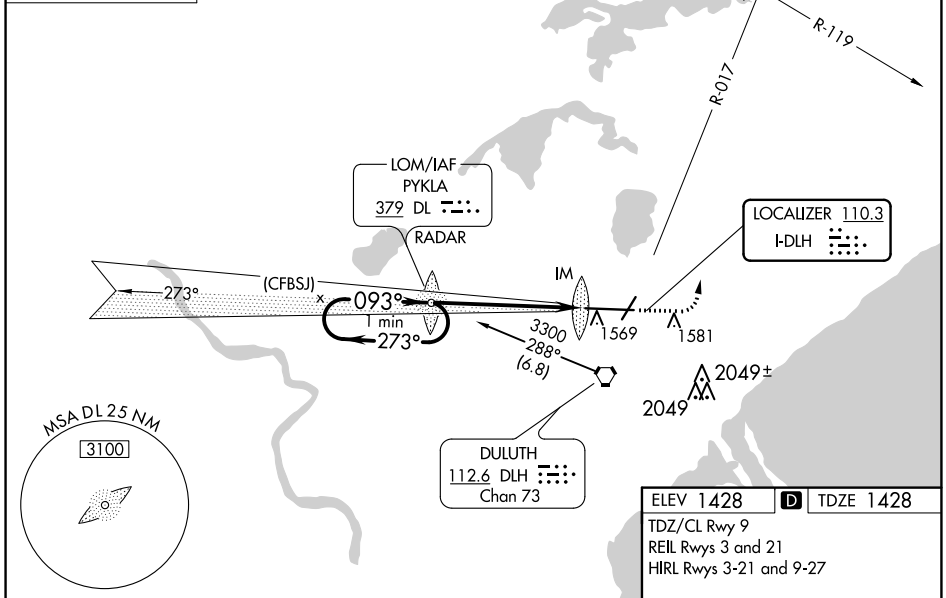
	ADF or RADAR required.	ALSF-2	MISSED APPROACH: Climb to 3000 then climbing left turn to 4500 on heading 320° and on DLH VORTAC R-017 to CHERL INT/DLH 1.5 DME and hold.

ATIS <b>124.1 270.1</b>	DULUTH APP CON <b>125.45 233.7</b>	DULUTH TOWER <b>118.3 257.8</b>	GND CON <b>121.9 348.6</b>
----------------------------	---------------------------------------	------------------------------------	-------------------------------

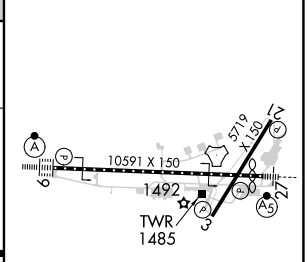
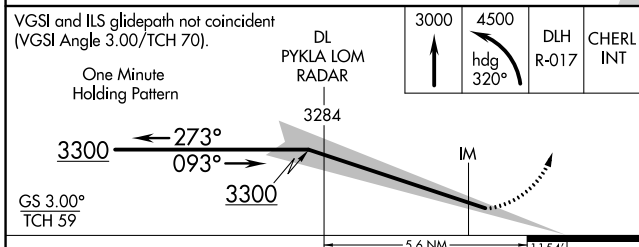
ALTERNATE MISSED APCH FIX

PYKLA  
 DL **379**  
 RADAR

**ADF or RADAR REQUIRED**



ELEV 1428	<b>D</b>	TDZE 1428
TDZ/CL Rwy 9		
REIL Rwys 3 and 21		
HIRL Rwys 3-21 and 9-27		



CATEGORY	A	B	C	D
S-ILS 9	RA 101/12 100 DA 1528			

**CATEGORY II ILS - SPECIAL AIRCREW & AIRCRAFT CERTIFICATION REQUIRED**

NC-1, 27 JAN 2022 to 24 FEB 2022

NC-1, 27 JAN 2022 to 24 FEB 2022