

WAAS CH 40114 W21A	APP CRS 213°	Rwy Idg TDZE Apt Elev	5719 1420 1428
--	------------------------	-----------------------------	---

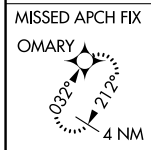
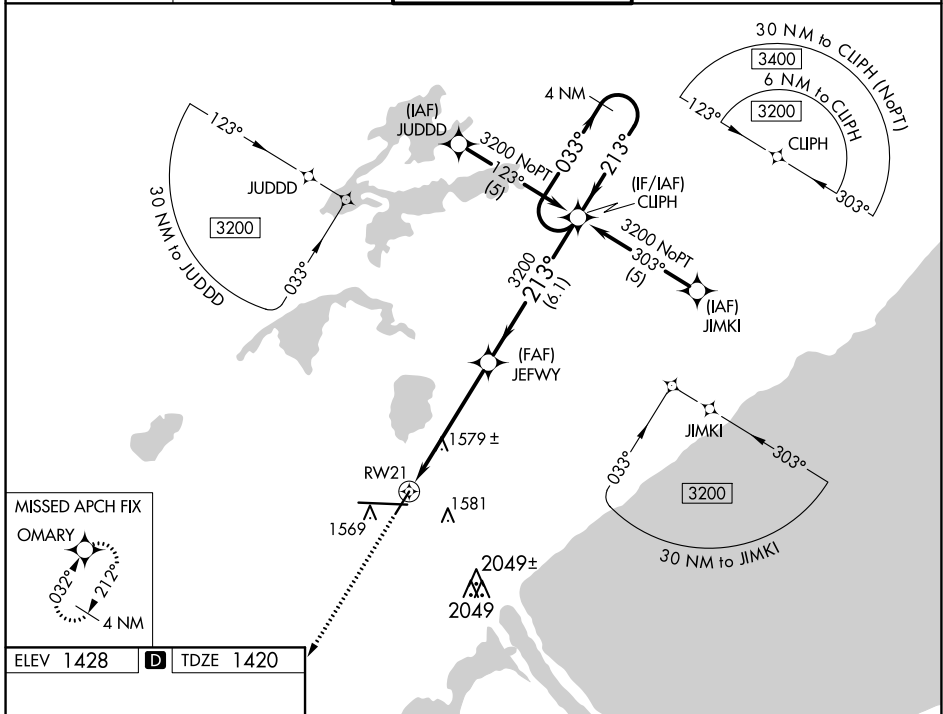
RNAV (GPS) RWY 21

DULUTH INTL (DLH)

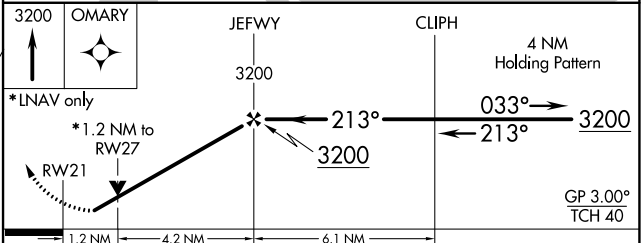
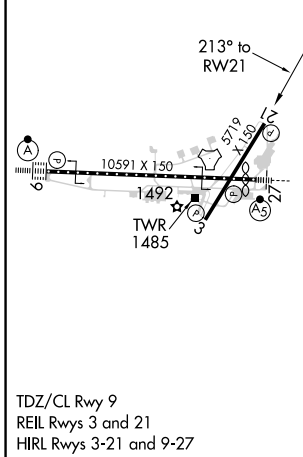
⚠ For uncompensated Baro-VNAV systems, LNAV/VNAV NA below -17°C (2°F) or above 46°C (115°F). DME/DME RNP-0.3 NA. Rwy 21 helicopter visibility reduction below ¾ SM NA.

MISSED APPROACH: Climb to 3200 direct OMARY and hold.

ATIS 124.1 270.1	DULUTH APP CON 125.45 233.7	DULUTH TOWER 118.3 257.8	GND CON 121.9 348.6
----------------------------	---------------------------------------	------------------------------------	-------------------------------



ELEV 1428	D	TDZE 1420
-----------	----------	-----------



CATEGORY	A	B	C	D
LPV DA		1708-1	288 (300-1)	
LNAV/VNAV DA		1927-1¾	507 (500-1¾)	
LNAV MDA	1840-1	420 (500-1)	1840-1¼	420 (500-1¼)
C CIRCLING	1880-1 452 (500-1)	1900-1 472 (500-1)	1940-1½ 512 (600-1½)	2400-3 972 (1000-3)

DULUTH, MINNESOTA
Orig-B 19JUL18

46°51'N-92°12'W

DULUTH INTL (DLH) RNAV (GPS) RWY 21

NC-1, 27 JAN 2022 to 24 FEB 2022

NC-1, 27 JAN 2022 to 24 FEB 2022