

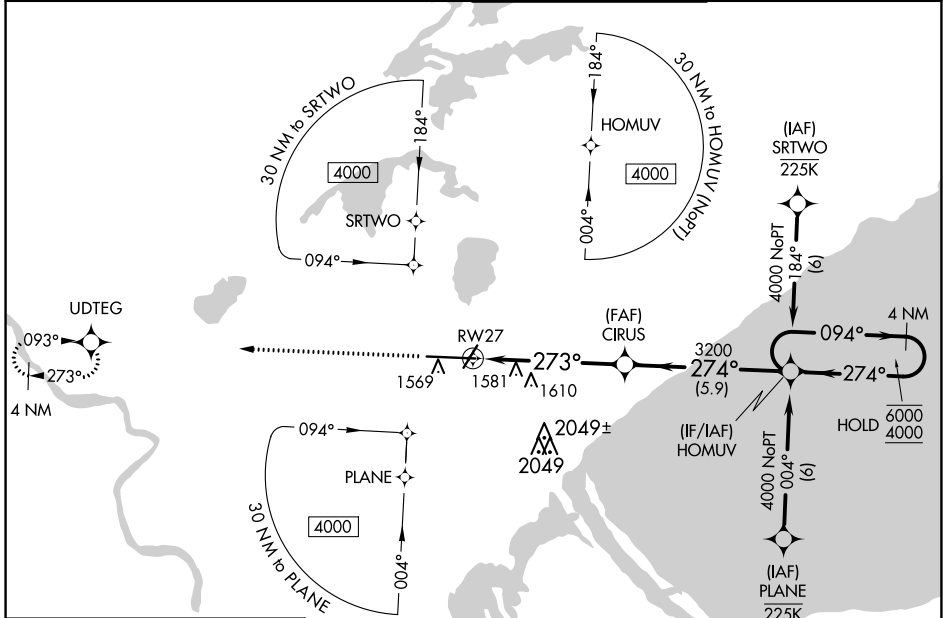
WAAS CH 50502 W27A	APP CRS 273°	Rwy Idg TDZE Apt Elev	10062 1421 1428
--	------------------------	-----------------------------	--

RNAV (GPS) RWY 27

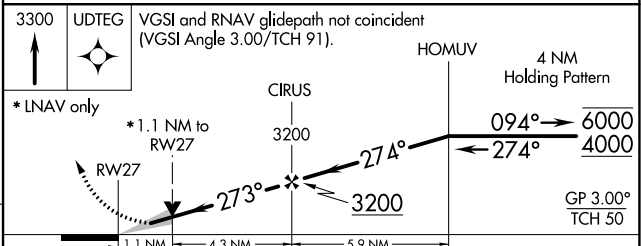
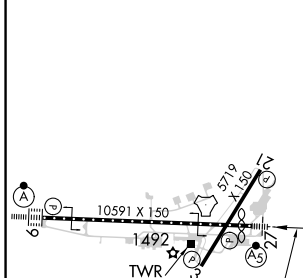
DULUTH INTL (DLH)

RNP APCH.	MALSR	MISSED APPROACH: Climb to 3300 direct UDTEG and hold.
<p>▼ For uncompensated Baro-VNAV systems, LNAV/VNAV NA below -21°C or above 54°C.</p> <p>▲ ASR #RVR 1800 authorized with use of FD or AP or HUD to DA.</p>		

ATIS 124.1 270.1	DULUTH APP CON 125.45 233.7	DULUTH TOWER 118.3 257.8	GND CON 121.9 348.6
----------------------------	---------------------------------------	------------------------------------	-------------------------------



ELEV 1428	D	TDZE 1421
-----------	----------	-----------



CATEGORY	A	B	C	D
LPV DA#	1621/24 200 (200-1/2)			
LNAV/VNAV DA	1871/45 450 (500-3/4)			
LNAV MDA	1860/24 439 (500-1/2)		1860/40 439 (500-3/4)	
C CIRCLING	1880-1 452 (500-1)	1900-1 472 (500-1)	1940-1 1/2 512 (600-1/2)	2400-3 972 (1000-3)

TDZ/CL Rwy 9
REIL Rwy 3 and 21
HIRL Rwy 3-21 and 9-27

NC-1, 27 JAN 2022 to 24 FEB 2022

NC-1, 27 JAN 2022 to 24 FEB 2022