

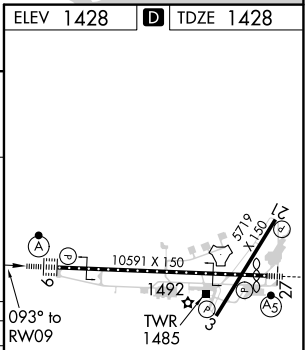
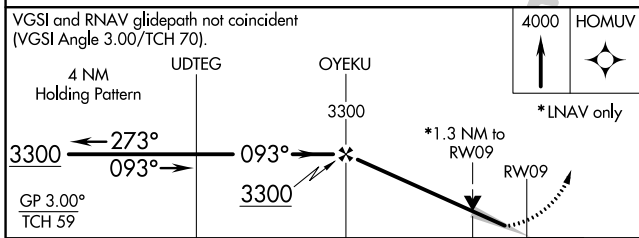
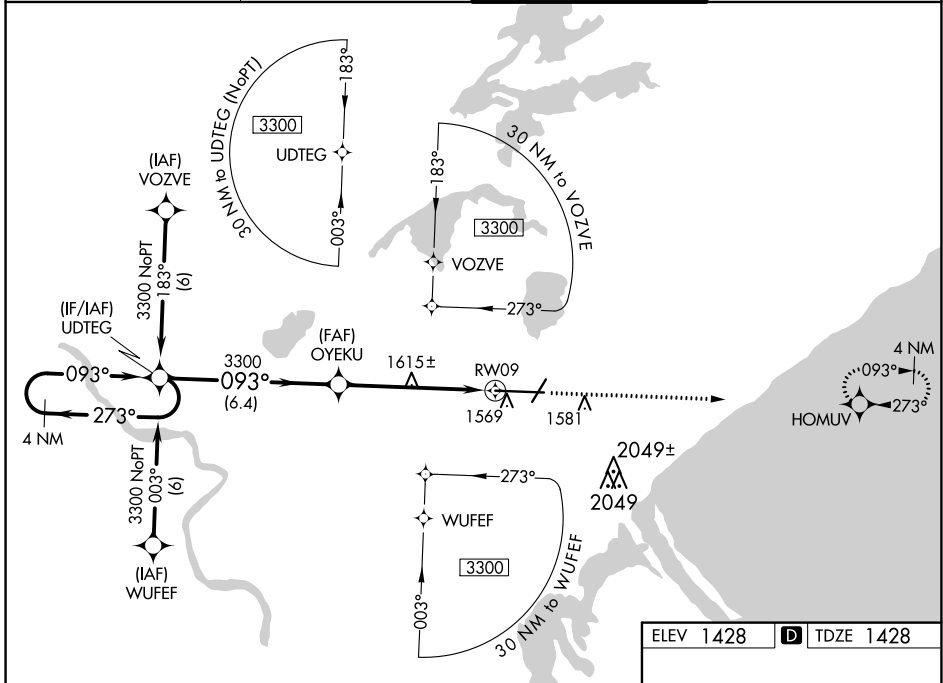
WAAS CH 90502 W09A	APP CRS 093°	Rwy Idg 10062 TDZE 1428 Apt Elev 1428
--	------------------------	--

RNAV (GPS) RWY 9

DULUTH INTL (DLH)

<p>For uncompensated Baro-VNAV systems, LNAV/VNAV NA below -17°C (2°F) or above 46°C (115°F). DME/DME RNP-0.3 NA. Circling NA for Cat E southeast of Rwy 3/27. For inop ALS, increase LPV Cat E visibility to 3/4 SM, LNAV/VNAV all Cats visibility to 1/2 SM and LNAV Cat E visibility to 1/2 SM.</p>	<p>ALSF-2</p>	<p>MISSED APPROACH: Climb to 4000 direct HOMUV and hold.</p>

<p>ATIS 124.1 270.1</p>	<p>DULUTH APP CON 125.45 233.7</p>	<p>DULUTH TOWER 118.3 257.8</p>	<p>GND CON 121.9 348.6</p>
------------------------------------	---	--	---------------------------------------



CATEGORY	A	B	C	D	E
LPV DA		1628/18	200 (200-1/2)		
LNAV/VNAV DA		1860/50	432 (500-1)		
LNAV MDA	1880/24	452 (500-1/2)	1880/40 452 (500-3/4)	1880/50	452 (500-1)
CIRCLING	1880-1 452 (500-1)	1900-1 472 (500-1)	1940-1 1/2 512 (600-1 1/2)	2400-3	972 (1000-3)

NC-1, 27 JAN 2022 to 24 FEB 2022

NC-1, 27 JAN 2022 to 24 FEB 2022