

DULUTH, MINNESOTA

TACAN RWY 9

TACAN LKI Chan 11	APCH CRS 087°	Rwy ldg 10,062 THRE 1428 Arprt Elev 1428
----------------------	------------------	--

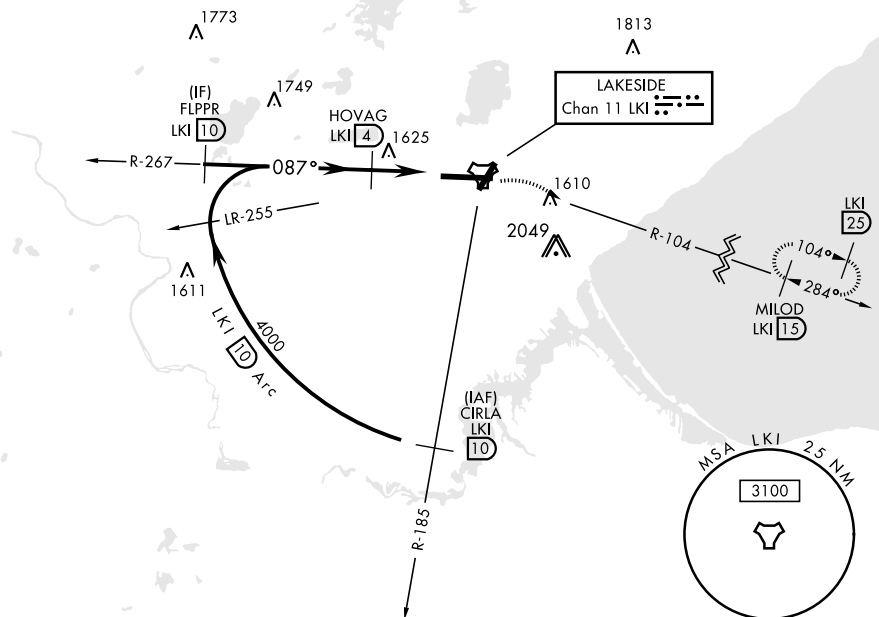
AL-125 [USAF]

DULUTH INTL (KDLH)

RADAR required.	ALSF-2	MISSED APPROACH: Climb to 2500 then climbing right turn to 4000 via LKI R-104 to MILOD (15 DME) and hold.
-----------------	--------	---

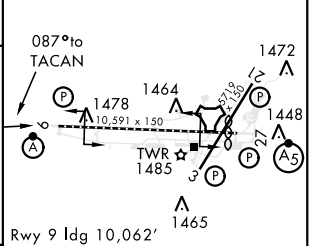
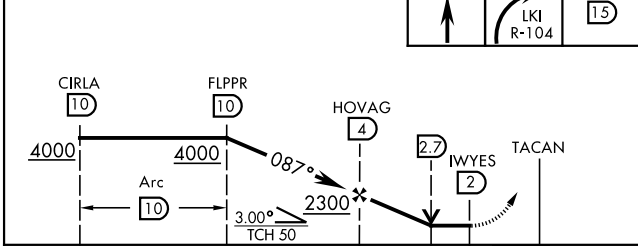
ATIS 124.1 270.1	APP CON 125.45 233.7	TOWER 118.3 257.8	GND CON 121.9 348.6
---------------------	-------------------------	----------------------	------------------------

CAUTION:
Do not select channel 73 "DLH" for channel 11 "LKI".
Towers 2049' on R-099 channel 73 "DLH".



EMERG SAFE ALT 100 NM 4100

2500	4000	MILOD	ELEV 1428	THRE 1428
------	------	-------	-----------	-----------



Rwy 9 ldg 10,062'
Rwy 27 ldg 10,062'

CATEGORY	A	B	C	D	E
S-9 *	1880/24 452 (500-½)		1880/45	452 (500-1)	
CIRCLING **	1920-1 492 (500-1)		1920-1½ 492 (500-1½)	1980-2 552 (600-2)	2060-2¼ 632 (700-2¼)

TDZL/CL Rwy 9-27
REIL Rwy 3 and 21
HIRL Rwy 3-21 and 9-27

DULUTH, MINNESOTA

46° 51' N-92° 12' W

DULUTH INTL (KDLH)

Amdt 3

TACAN RWY 9

NC-1, 27 JAN 2022 to 24 FEB 2022

NC-1, 27 JAN 2022 to 24 FEB 2022