

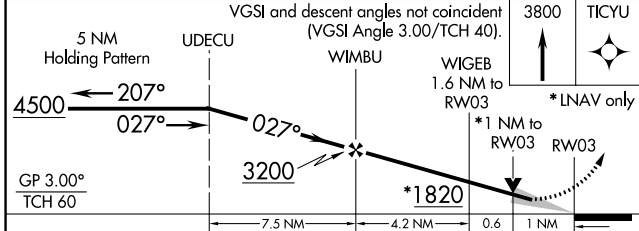
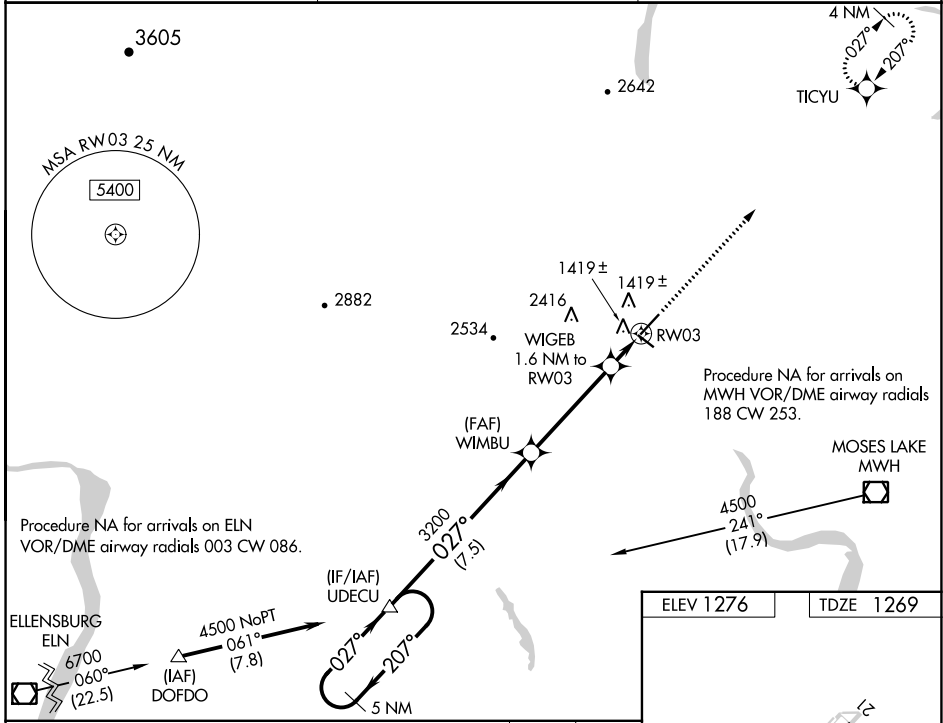
WAAS CH <b>50208</b> <b>W03A</b>	APP CRS <b>027°</b>	Rwy Idg TDZE Apt Elev	<b>5500</b> <b>1269</b> <b>1276</b>
--	------------------------	-----------------------------	---

# RNAV (GPS) RWY 3

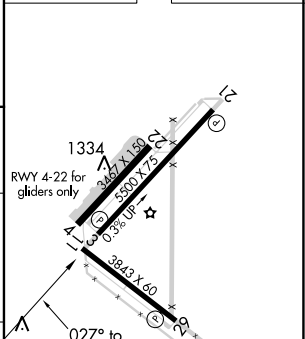
EPHRATA MUNI (EPH)

RNP APCH.	MISSED APPROACH: Climb to 3800 direct TICYU and hold.
<p>▼ For uncompensated Baro-VNAV systems, LNAV/VNAV NA below -17°C or above 46°C. VDP and Baro-VNAV NA when using Moses Lake/Grant County Intl altimeter setting. When local altimeter setting not received, use Moses Lake/Grant County Intl altimeter setting and increase all DA/MDA 40 feet and LNAV Cat C and D visibility ¼ SM.</p>	

ASOS <b>135.775</b>	GRANT COUNTY APP CON * <b>126.4 379.95</b>	UNICOM <b>122.8 (CTAF) 0</b>
------------------------	---	---------------------------------



ELEV 1276	TDZE 1269
-----------	-----------



CATEGORY	A	B	C	D
LPV DA	1519-1		250 (300-1)	
LNAV/VNAV DA	1689-1½		420 (500-1½)	
LNAV MDA	1680-1 411 (500-1)		1680-1¼ 411 (500-1¼)	

NW-1, 27 JAN 2022 to 24 FEB 2022

NW-1, 27 JAN 2022 to 24 FEB 2022