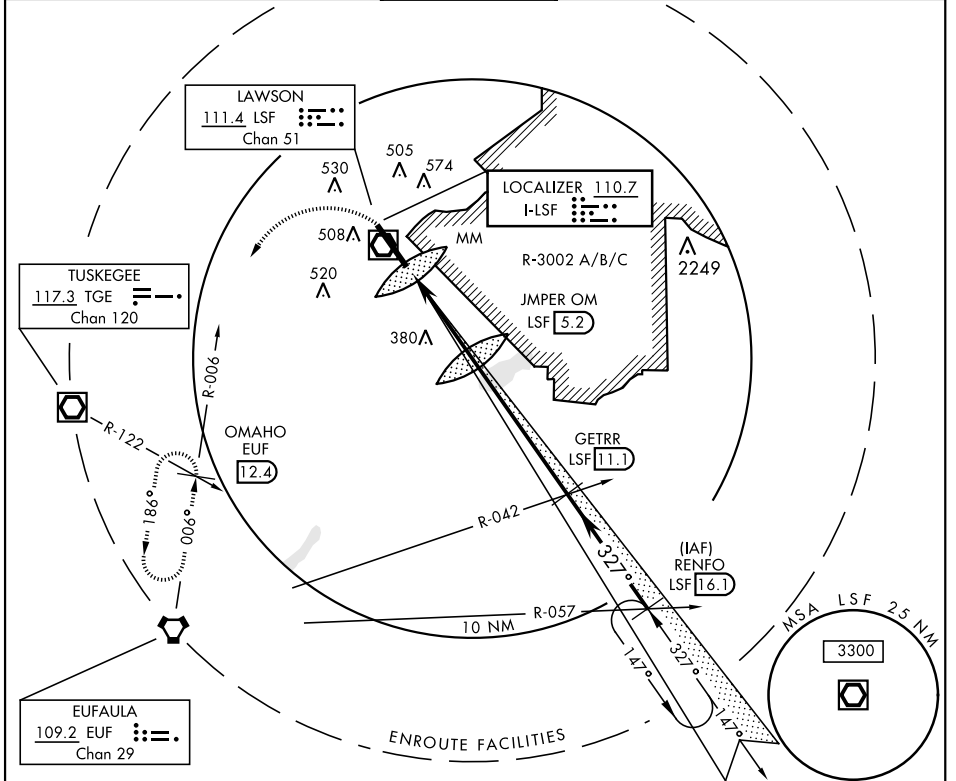
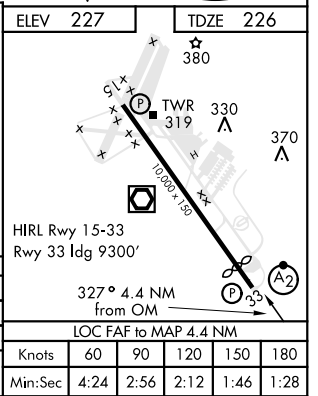


# ILS or LOC RWY 33

LOC I-LSF <b>110.7</b>	APCH CRS <b>327°</b>	Rwy ldg TDZE Arpt Elev <b>9300</b> <b>226</b> <b>227</b>	AL-146 [USA]	LAWSON AAF (KLSF)	
▼ * Circling not authorized E of Rwy 15-33. NA when tower closed.			SALSF 	MISSED APPROACH: Climb to 1000 then climbing left turn to 2400 via EUF R-006 to OMAHO INT/EUF 12.4 DME and hold.	
ATIS ★ <b>134.375</b>	ATLANTA APP CON <b>125.5 323.1</b>	TOWER ★ <b>119.05 269.525</b>	GND CON <b>121.7 254.25</b>	CLNC DEL <b>121.7 251.15</b>	ASR/ PAR



1000 ↑	2400 ↙ EUF R-006	OMAHO EUF <b>12.4</b>	JMPER OM <b>5.2</b> 1454	GETRR <b>11.1</b> EUF R-042	RENFO <b>16.1</b> EUF R-057
CATEGORY	A	B	C	D	
S-ILS 33	426/24	200 (200-½)	426/40	200 (200-¾)	
S-LOC 33	640/40	414 (500-¾)	640/50	414 (500-1)	
CIRCLING *	820-1	593 (600-1)	840-1 ¾ 613 (700-1 ¾)	880-2 653 (700-2)	



# ILS or LOC RWY 33

SE-4, 27 JAN 2022 to 24 FEB 2022

SE-4, 27 JAN 2022 to 24 FEB 2022

LOC FAF to MAP 4.4 NM					
Knots	60	90	120	150	180
Min:Sec	4:24	2:56	2:12	1:46	1:28