

RNAV (GPS) RWY 33

APCH CRS	Rwy ldg	9300
327°	TDZE	226
	Arprt Elev	227

AL-146 [USA]

LAWSON AAF (KLSF)

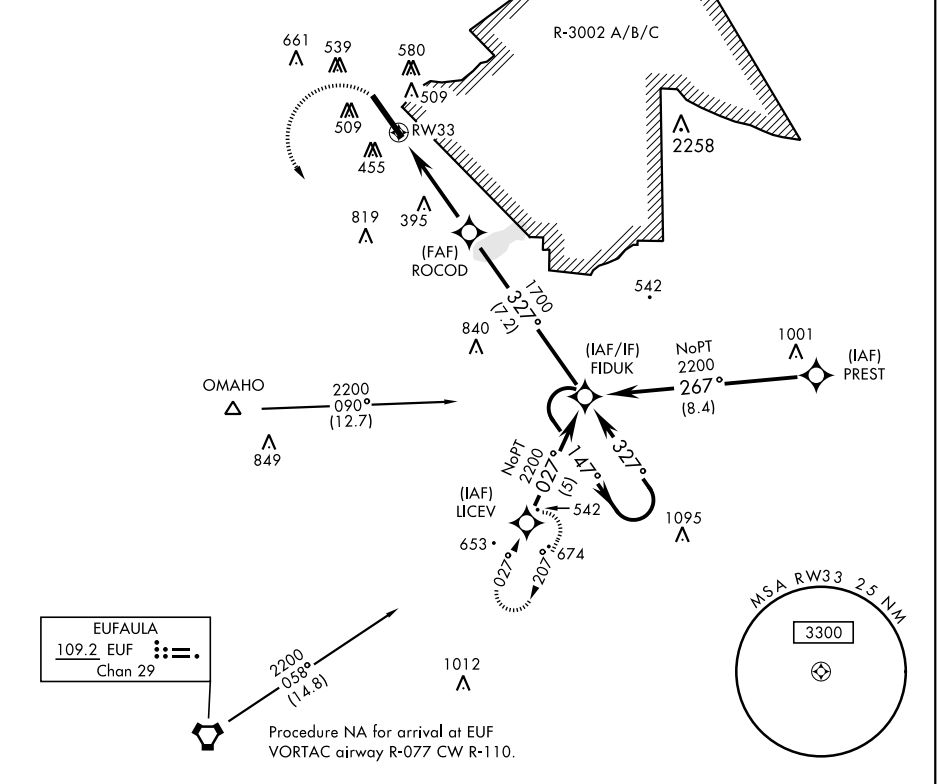
▼ * When ALS inop, increase CAT D vis to 1½ miles.
 ** Circling not authorized E of Rwy 15-33.

SALSF

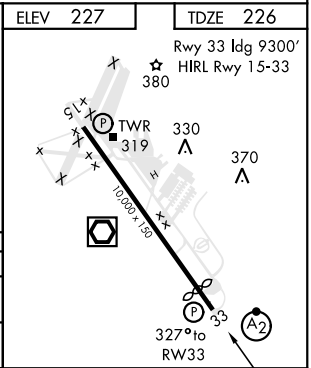
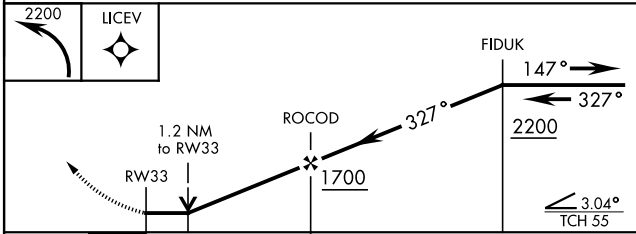
MISSED APPROACH: Climbing left turn to 2200 direct LICEV and hold.

ATIS ★ 134.375	ATLANTA APP CON 125.5 323.1	TOWER ★ 119.05 269.525	GND CON 121.7 254.25	CLNC DEL 121.7 251.15	ASR/ PAR
--------------------------	---------------------------------------	----------------------------------	--------------------------------	---------------------------------	-------------

DME/DME RNP-0.3 NA



EUFULA
 109.2 EUF
 Chan 29



CATEGORY	A		B		C		D	
RNAV MDA*	660/40	434 (500-¾)	660/50	434 (500-1)	660/60	434 (500-1¼)	660/60	434 (500-1¼)
CIRCLING**	820-1	593 (600-1)	840-1¾	613 (700-1¾)	880-2	653 (700-2)	880-2	653 (700-2)

RNAV (GPS) RWY 33

SE-4, 27 JAN 2022 to 24 FEB 2022

SE-4, 27 JAN 2022 to 24 FEB 2022