

FT. BENNING (COLUMBUS), GEORGIA

VOR/DME RWY 15

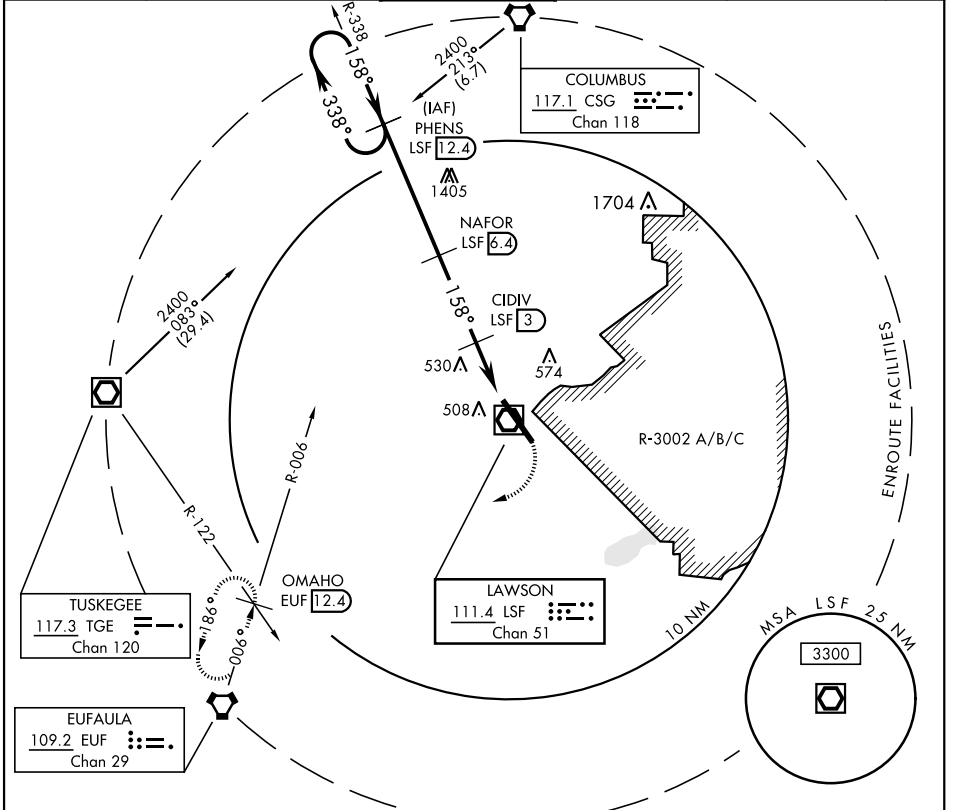
VOR/DME LSF 111.4 Chan 51	APCH CRS 158°	Rwy ldg TDZE 226 Arprt Elev 227
---	-------------------------	--

AL-146 [USA]

LAWSON AAF (KLSF)

*** Circling not authorized E of Rwy 15-33.** MISSED APPROACH: Climbing right turn to 2400 via heading 240° and EUF VORTAC R-006 to OMAHO INT/EUF 12.4 DME and hold.

ATIS ★ 134.375	ATLANTA APP CON 125.5 323.1	TOWER ★ 119.05 269.525	GND CON 121.7 254.25	CLNC DEL 121.7 251.15	ASR/ PAR
--------------------------	---------------------------------------	----------------------------------	--------------------------------	---------------------------------	-------------



	VGS1 and descent angles not coincident.		2400 hdg 240°	OMAHO EUF 12.4	ELEV 227	TDZE 226
	PHENS 12.4 2400 158° 2400 158° 2400 158° 338° 2100 1000 3.4 NM 2.3 NM		VOR/DME 7			
CATEGORY	A	B	C	D		
S-15	820/50	594 (600-1)	820-1½ 594 (600-1½)	820-1¾ 594 (600-1¾)		
CIRCLING *	820-1	593 (600-1)	840-1¾ 613 (700-1¾)	880-2 653 (700-2)	Rwy 33 ldg 9300' HIRL Rwy 15-33	

FT. BENNING (COLUMBUS), GEORGIA

32°20'N-85°00'W

LAWSON AAF (KLSF)

Amdt 9B 16JUL20

VOR/DME RWY 15

SE-4, 27 JAN 2022 to 24 FEB 2022

SE-4, 27 JAN 2022 to 24 FEB 2022