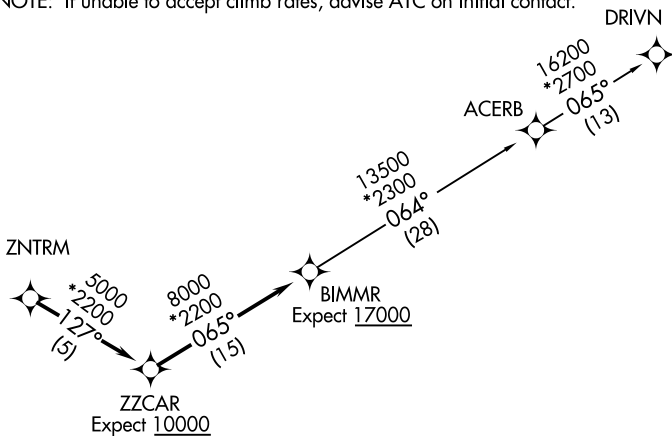


BIMMR TWO DEPARTURE (RNAV)

TOP ALTITUDE:
3000

AWOS-3
127.325
CLNC DEL
121.4
GND CON
121.4
DONALDSON TOWER ★
133.325 269.25
UNICOM
122.7
GREER DEP CON ★
118.8 270.275

NOTE: Do not exceed 250K until advised by ATC.
NOTE: For turbojets only.
NOTE: RNAV 1.
NOTE: RADAR required.
NOTE: DME/DME/IRU or GPS required.
NOTE: If unable to accept climb rates, advise ATC on initial contact.



TAKEOFF MINIMUMS

Rwy 23: Standard.

Rwy 5: 300-1¾ or standard with minimum climb of 220' per NM to 1300, or alternatively, with standard takeoff minimums and a normal 200' per NM climb gradient, takeoff must occur no later than 1800' prior to DER.

NOTE: Chart not to scale.



DEPARTURE ROUTE DESCRIPTION

TAKEOFF ALL RUNWAYS: Climb on assigned heading for RADAR vectors to ZNTRM, then on depicted route to BIMMR, thence. . . .

. . . on assigned transition. Maintain 3000. Expect clearance to filed altitude within 10 minutes after departure.

ACERB TRANSITION (BIMMR2.ACERB)

DRIVN TRANSITION (BIMMR2.DRIVN)

BIMMR TWO DEPARTURE (RNAV)